

smartisan T1

When Set for Left-Handed Use

Press & Hold **On / Off**
Press **Wake / Lockscreen**

Volume

Brightness

BACK

HOME

MENU



When Set for Right-Handed Use

Press & Hold **On / Off**
Press **Wake / Lockscreen**

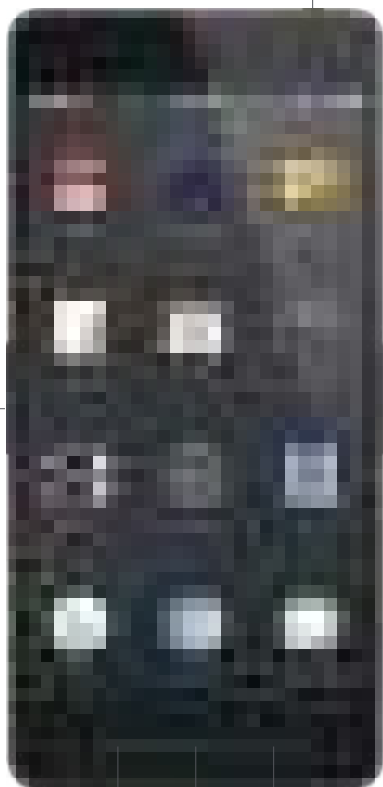
Brightness

Volume

MENU

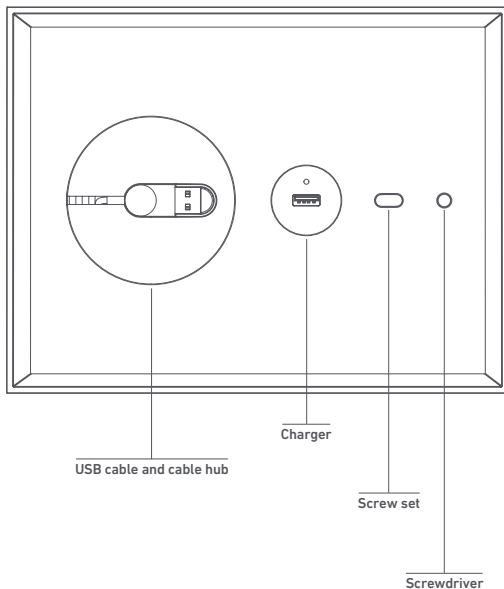
HOME

BACK

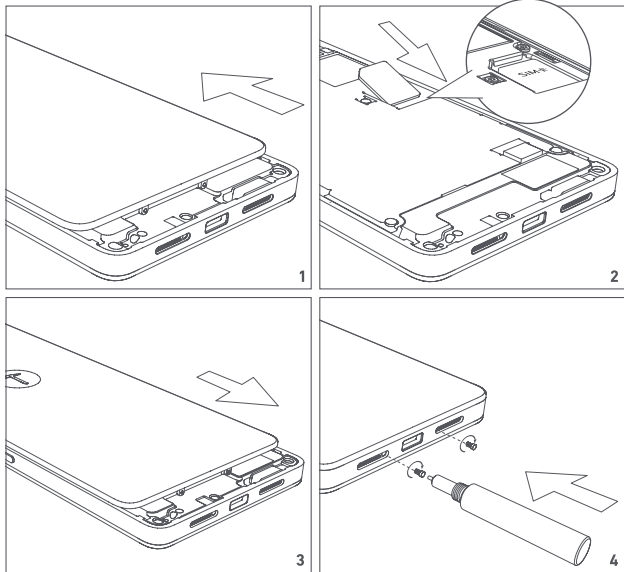


Accessories

Smartisan T1 comes with the following accessories: USB cable and cable hub, charger, and a set of screws and screwdriver. The screws and screwdriver are used to remove the back cover of the phone. For specific instructions on how to do this, please see the next page.



Instructions for installing your SIM card



1. Push upwards on the back cover of the phone with a slight force.
2. Insert your SIM card in the proper direction as shown in the picture above.
3. Replace the back cover, pushing down till it is firmly in place.
4. Use the screws and screwdriver provided, inserting the screws where shown in the picture above and screwing them firmly into place.

Warning: If you do not use the screws to secure the back cover, it will increase the risk of damage to the internal components of the phone, and may allow dust to enter the inside of the phone.

Product specifications

Product Name: Smartisan T1

Model Number: SM701

Manufacturer: Smartisan Technology (Beijing) co, Ltd.

FCC ID: 2AEUYSM701

Cell Networks:

GSM: 850/900/1800/1900 MHz

WCDMA: 850/900/2100 MHz

Hardware Specifications:

Processor: Qualcomm® Snapdragon™ 801 (MSM8974AC) quadcore processor, 2.5 GHz

Memory: 2GB RAM (LPDDR3, 933 MHz)

Screen: JDI 4.95" Pixel Eyes™ HD screen, 1920x1080 resolution, 445 PPI

Main Camera: 12.78 MP

Front Camera: 5.03 MP

Wi-Fi & GPS Functions: 802.11 a/b/g/n, GPS, BT4.0, NFC

Dimensions:

Height: 141 mm

Width: 67.8 mm

Thickness: 8.25 mm

Charger:

Model: CD701

Voltage: 100-240V~50/60 Hz 0.3 A

FCC Compliance

Any changes or modifications not expressly approved by the party responsible for compliance could void the user's authority to operate the equipment.

This device complies with part 15 of the FCC Rules. Operation is subject to the following two conditions: (1) This device may not cause harmful interference, and (2) This device must accept any interference received, including interference that may cause undesired operation.

Note: This equipment has been tested and found to comply with the limits for a Class B digital device, pursuant to Part 15 of the FCC Rules. These limits are designed to provide reasonable protection installation. This equipment generates, uses and can radiate radio frequency energy and, if not installed and used in accordance with the instructions, may cause harmful interference to radio communications. However, there is no guarantee that interference will not occur in a particular installation. If this equipment does cause harmful interference to radio or television reception, which can be determined by turning the equipment off and on, the user is encouraged to try to correct the interference by one or more of the following measures:

- Reorient or relocate the receiving antenna.
- Increase the separation between the equipment and receiver.
- Connect the equipment into an outlet on a circuit different from that to which the receiver is connected.
- Consult the dealer or an experienced radio/ TV technician for help.

The exposure recommendations for mobile phones use a measurement unit known as the Specific Absorption Rate (SAR). The SAR limit recommended by the ICNIRP for the mobile phones used by the general public is 1.6W/kg averaged over one gram of tissue by IEEE Std 1528 for the head.

The highest SAR value for this model phone when tested was 0.588W/kg for head, 0.244W/kg for Body-worn and 0.83W/kg for hotspot.

For limiting the radio waves exposure, it is recommended to reduce the mobile phone call duration or to use a headset. The purpose of those precautions is to take the mobile phone away from the head and the body.

For body worn operation, this phone has been tested and meets FCC RF exposure guidelines when used with an accessory that contains no metal and that positions the handset a minimum of 1.0cm from the body. Use of other accessories may not ensure compliance with FCC RF exposure guidelines.



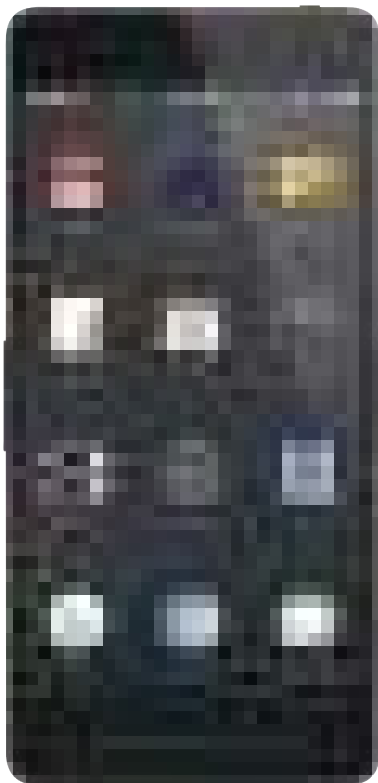
Unlocking the Screen

Swipe up anywhere on the lockscreen wallpaper to unlock the phone.
Press and hold any of the Phone / Messages / Camera icons and swipe up to unlock and jump directly to the corresponding app.



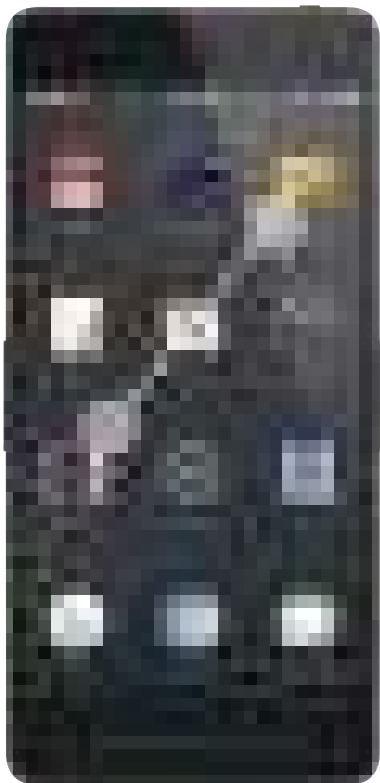
System Launcher

The Smartisan OS launcher has diverse styles of system themes to choose from.



Launcher Single Grid View

On the launcher, a swipe left or right will take you from one grid to the next. With a two-fingered pinch or pressing the Menu key you can switch to a multi-grid view.



Multi-Grid View

Press and hold a grid's title bar to move the whole grid.



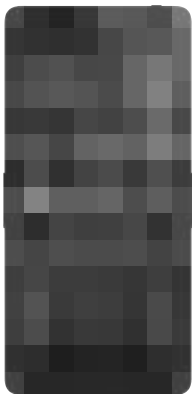
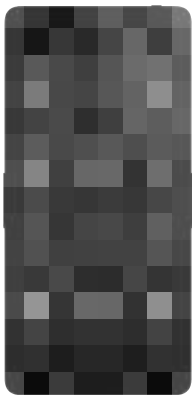
Hiding, Locking, and Moving apps en masse

In the editing mode, you can select multiple apps by tapping on them.



More Launcher Settings

You can further customize your launcher in **Settings** > **Launcher Settings**



The Built-in “Smiling Cloud” Service

With the Smiling Cloud service built-in to Smartisan OS, you can sync your contacts, calendar, notes, and photos to the cloud. In **Settings**, just tap **Smiling Cloud** to register, log in, and start using the cloud service.



Smiling Cloud



Contacts



Calendar



Notes



Gallery

Smiling Cloud Synchronization Tool



To make it easy to transfer your contacts data from your old phone to your Smartisan T1, we have provided a data sync tool for both iOS and Android users.

1. You can use your old phone to scan the QR code above and download the sync tool directly. You can also download it from an app market: just go to Apple's iPhone App Store or any major Android app market and search for "**Smiling Cloud Sync Tool**".
2. After installing the sync tool on your old phone, please register for a Smiling Cloud account; if you have already done so, you may log in directly.
3. After registering and logging in, select **Backup Data to Server**.
4. After syncing, tap **Settings** on your Smartisan T1, and then select **Smiling Cloud**. Log in with your Smiling Cloud account and select **Activate Smiling Cloud Service**. You can then sync your contacts data from your old phone to your new one.

Note: The Android version of the Smiling Cloud Sync Tool is a manual, one-way sync tool, not an does not sync automatically or both ways. After you have manually synced your contacts, any further additions, deletions, or other alterations you make to your contacts on your old phone will not change the contacts data on your Smartisan T1 (unless you manually sync them a second time). Any changes to contacts data on your Smartisan T1 will not affect the contacts on your old Android phone.

The iOS version of the Smiling Cloud Sync Tool is a manual two-way sync tool, but not an automatic syncing tool. After manually syncing your contacts data, any further additions, deletions, or other alterations you make to your contacts on your old phone will not affect the contacts data on your Smartisan T1 (unless you manually sync them a second time).