

Lenovo ZUK

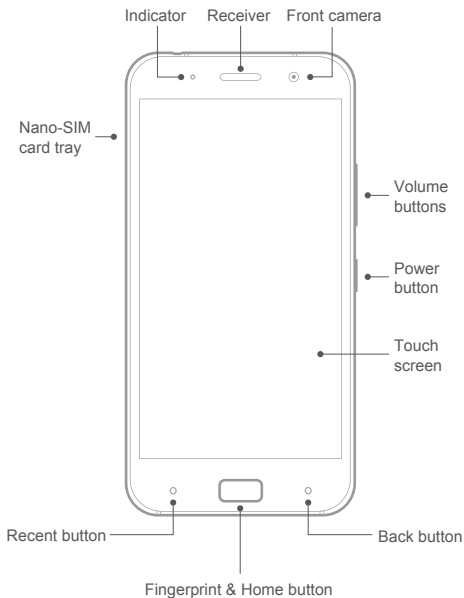
Quick Start Guide

Market Name: Z1 Model: Z1221

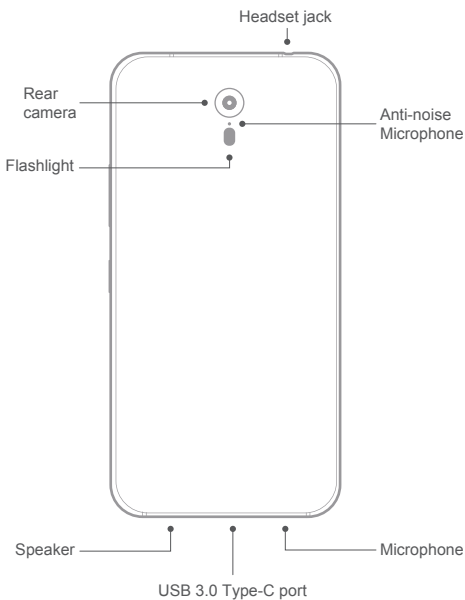
Beijing SHENQI Technology Co.,Ltd (“SHENQI”)
A **Lenovo** Company

Front view

Note: Your phone may look a little bit different from the images in this guide. The images are for your reference only.



Back view



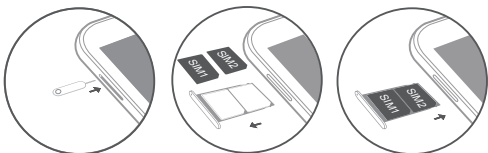
Getting started

Installing the Nano-SIM card

A Nano-SIM card provided by your carrier is required in order to use cellular services.

CAUTION: Use standard Nano-SIM cards only. Inserting a modified card may cause the card to damage the card slot.

1. Insert the SIM eject tool that comes with your phone into the hole in the Nano-SIM card tray.
2. Pull out the card tray and position one or two Nano-SIM cards with the gold contacts facing down into the tray.
3. Insert the card tray back into the slot.



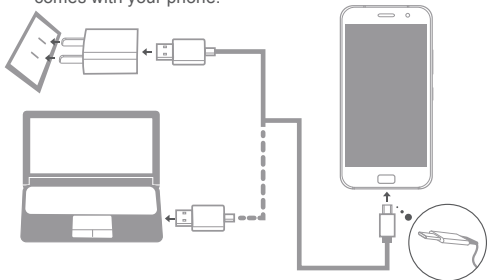
Turning on or turning off your phone

Turn on	Press and hold the Power button until the screen lights up.
Turn off	Press and hold the Power button for a few seconds, then tap Power off .
Restart	Press and hold the Power button for a few seconds, then tap Reboot . To force restart your phone, press and hold the Power button for about 10 seconds.

Charging the battery


Charge the battery by one of the following methods:

- Connect your phone to a power outlet using the cable and USB power adapter that come with your phone.
- Connect your phone to a computer using the cable that comes with your phone.



 Low battery power

 Charging

 Fully charged

Taking screenshots

Press and hold the Power button and the volume down button at the same time to take a screenshot.

To view the screenshots, open the **Gallery** app and find the **Screenshots** album.

Downloading publications

To obtain the latest publications for your phone, go to <http://support.lenovo.com> and follow the instructions on the screen.

Service and support information

The following information describes the technical support that is available for your product, during the warranty period or throughout the life of your product. Refer to the *Lenovo Limited Warranty* for a full explanation of Lenovo warranty terms. See “*Lenovo Limited Warranty notice*” later in this document for details on accessing the full warranty.

Online technical support

Online technical support is available during the lifetime of a product at <http://www.lenovo.com/support>.

Telephone technical support

Where applicable, you can get help and information from the Customer Support Center by telephone. Before contacting a Lenovo technical support representative, please have the following information available: model and serial number, the exact wording of any error message, and a description of the problem.

Your technical support representative might want to walk you through the problem while you are at your phone during the call.

Worldwide Lenovo Support telephone list

IMPORTANT: Telephone numbers are subject to change without notice. The most up-to-date telephone list for the Customer Support Center is always available at <http://support.lenovo.com/supportphonenumberlist>.

The Customer Support Center phone number is subjected to change. For the latest phone number, go to the e-support website. If the telephone number for your country or region is not listed, contact your Lenovo reseller or Lenovo marketing representative.

Warranty information

Lenovo Limited Warranty notice

Read the full *Lenovo Limited Warranty* at <http://support.lenovo.com/smartphone-llw>. You can view the full warranty in a number of languages from this Web site. If you cannot view the full warranty either from the Web site or from your phone, contact your local Lenovo office or reseller to obtain a printed version of the full warranty.

IMPORTANT: Lenovo phone products do not have International Warranty Services.

Warranty period and type of warranty service

Country or Region of Purchase	Warranty Period	Type of Warranty Service
India	Handset - 1 year Charger - 6 months Earphone - 6 months Embedded Battery (within the handset) – 1 year or Removable Battery - 6 months	4

Types of warranty service

1. Customer Replaceable Unit (“CRU”) Service
2. On-site Service
3. Courier or Depot Service
4. Customer Carry-In Service
5. Mail-in Service
6. Customer Two-Way Mail-in Service
7. Product Exchange Service

For a full explanation of the types of warranty service, refer to the full warranty.

Safety, regulatory & handling information

This section contains important safety, regulatory and handling information for your phone. Complete information, including recycling and environmental information, is provided in the *Regulatory Notice*.

Reading first — regulatory information

Be sure to read the *Regulatory Notice* for your country or region before using the wireless devices contained in your Mobile Phone. To obtain a PDF version of the *Regulatory Notice*, see the “Downloading publications” section.

Operating temperature

Use your phone only in the temperature range of -10°C (14 °F) — 40°C (104°F) to avoid damage.

General battery notice

Batteries supplied by Lenovo for use with your phone have been tested for compatibility and should only be replaced with approved parts. Dispose of used batteries according to the instructions.

CAUTION:

- Risk of explosion if the battery is replaced with an incorrect type.
- Do not attempt to replace the internal rechargeable lithium ion battery. Contact Lenovo Support for factory replacement.

Charging

Lenovo is not responsible for the performance or safety of products not manufactured or approved by Lenovo. Use only Lenovo-approved ac adapters and batteries. Adapters shall be installed near the equipment and shall be easily accessible.

Preventing hearing damage

CAUTION: Excessive sound pressure from earphones and headphones can cause hearing loss.

Disposing according to local laws and regulations

When your phone reaches the end of its useful life, do not crush, incinerate, immerse in water, or dispose of the phone in any manner contrary to local laws and regulations. Some internal parts contain substances that can explode, leak, or have an adverse environmental effect if disposed of incorrectly.

Radio and Telecommunications Terminal Equipment Directive

CE 0560 !

Lenovo declares that this product is in compliance with:

- The essential requirements and other relevant provisions of the Radio and Telecommunications Terminal Equipment Directive, 1999/5/EC
- All other relevant EU directives

Your phone is restricted to indoor use when operating in the 5.15 to 5.35 GHz frequency band.

The Declaration of Conformity information is located in the *Regulatory Notice*. To obtain a PDF version of the *Regulatory Notice*, see the “Downloading publications” section.

Important WEEE information



Specific Absorption Rate information

Your mobile phone is a radio transmitter and receiver. It meets the government's requirements for exposure to radio waves.

The exposure standard for mobile phones employs a unit of measurement known as the Specific Absorption Rate, or SAR.

The India SAR limit for mobile phones is 1.6 W/kg averaged over 1 gram of tissue. Tests for SAR are conducted using standard operating positions with the phone transmitting at its highest certified power level in all tested frequency bands.

The highest SAR value for your phone when tested for use at the head and body is outlined as follows:

Position	The highest SAR value	Regulation
Head	0.460 W/kg	India 1g SAR Limit (1.6 W/kg)
Body-worn	0.733 W/kg	

During use, the actual SAR values for this phone are usually well below the values stated above. This is because, for purposes of system efficiency and to minimize interference on the network, the operating power of your mobile phone is automatically decreased when full power is not needed for the call. The lower the power output of the phone, the lower its SAR value.

To meet RF exposure guidelines during body-worn operation, the phone must be positioned at least 1.5 cm away from your body.

Precautionary guidelines for mobile users

Mobile users are advised to take precautionary measures while using a mobile handset as:

1. Keep distance – Hold the cell phone away from body to the extent possible.
2. Use a headset (wired or Bluetooth) to keep the handset away from your head.
3. Do not press the phone handset against your head. Radio Frequency (RF) energy is inversely proportional to the square of the distance from the source -- being very close increases energy absorption much more.
4. Limit the length of mobile calls.
5. Use text as compared to voice wherever possible.
6. Put the cell phone on speaker mode.
7. If the radio signal is weak, a mobile phone will increase its transmission power. Find a strong signal and avoid movement – Use your phone where reception is good.
8. Metal & water are good conductors of radio waves so avoid using a mobile phone while wearing metal-framed glasses or having wet hair.
9. Let the call connect before putting the handset on your ear or start speaking and listening – A mobile phone first makes the communication at higher power and then reduces power to an adequate level. More power is radiated during call connecting time.
10. If you have a choice, use a landline (wired) phone, not a mobile phone.
11. When your phone is ON, don't carry it in chest/breast or pants pocket. When a mobile phone is ON, it automatically transmits at high power every one or two minutes to check (poll) the network.
12. Reduce mobile phone use by children as a younger person will likely have a longer lifetime exposure to radiation from cell phones.
13. People having active medical implants should preferably keep the cell phone at least 15 cm away from the implant.

© Copyright Lenovo 2015.

Reduce | Reuse | Recycle



V1.0_20151103



FSC8C00006

YT

Printed in China

Safety, regulatory & handling information

This section contains important safety, regulatory and handling information for your phone. Complete information, including recycling and environmental information, is provided in the *Regulatory Notice*.

Reading first — regulatory information

Be sure to read the *Regulatory Notice* for your country or region before using the wireless devices contained in your Mobile Phone. To obtain a PDF version of the *Regulatory Notice*, see the “Downloading publications” section.

Operating temperature

Use your phone only in the temperature range of -10°C (14 °F) — 40°C (104°F) to avoid damage.

General battery notice

Batteries supplied by Lenovo for use with your phone have been tested for compatibility and should only be replaced with approved parts. Dispose of used batteries according to the instructions.

CAUTION:

- Risk of explosion if the battery is replaced with an incorrect type.
- Do not attempt to replace the internal rechargeable lithium ion battery. Contact Lenovo Support for factory replacement.

Charging

Lenovo is not responsible for the performance or safety of products not manufactured or approved by Lenovo. Use only Lenovo-approved ac adapters and batteries. Adapters shall be installed near the equipment and shall be easily accessible.

Preventing hearing damage

CAUTION: Excessive sound pressure from earphones and headphones can cause hearing loss.

Disposing according to local laws and regulations

When your phone reaches the end of its useful life, do not crush, incinerate, immerse in water, or dispose of the phone in any manner contrary to local laws and regulations. Some internal parts contain substances that can explode, leak, or have an adverse environmental effect if disposed of incorrectly.

Radio and Telecommunications Terminal Equipment Directive



Lenovo declares that this product is in compliance with:

- The essential requirements and other relevant provisions of the Radio and Telecommunications Terminal Equipment Directive, 1999/5/EC
- All other relevant EU directives

Your phone is restricted to indoor use when operating in the 5.15 to 5.35 GHz frequency band.

The Declaration of Conformity information is located in the *Regulatory Notice*. To obtain a PDF version of the *Regulatory Notice*, see the “Downloading publications” section.

Important WEEE information



Specific Absorption Rate information

Your mobile phone is a radio transmitter and receiver. It meets the government’s requirements for exposure to radio waves. The exposure standard for mobile phones employs a unit of measurement known as the Specific Absorption Rate, or SAR.

The India SAR limit for mobile phones is 1.6 W/kg averaged over 1 gram of tissue. Tests for SAR are conducted using standard operating positions with the phone transmitting at its highest certified power level in all tested frequency bands.

The highest SAR value for your phone when tested for use at the head and body is outlined as follows:

Position	The highest SAR value	Regulation
Head	0.460 W/kg	India 1g SAR Limit (1.6 W/kg)
Body-worn	0.733 W/kg	

During use, the actual SAR values for this phone are usually well below the values stated above. This is because, for purposes of system efficiency and to minimize interference on the network, the operating power of your mobile phone is automatically decreased when full power is not needed for the call. The lower the power output of the phone, the lower its SAR value.

To meet RF exposure guidelines during body-worn operation, the phone must be positioned at least 1.5 cm away from your body.

Precautionary guidelines for mobile users

Mobile users are advised to take precautionary measures while using a mobile handset as:

1. Keep distance – Hold the cell phone away from body to the extent possible.
2. Use a headset (wired or Bluetooth) to keep the handset away from your head.
3. Do not press the phone handset against your head. Radio Frequency (RF) energy is inversely proportional to the square of the distance from the source -- being very close increases energy absorption much more.
4. Limit the length of mobile calls.
5. Use text as compared to voice wherever possible.
6. Put the cell phone on speaker mode.
7. If the radio signal is weak, a mobile phone will increase its transmission power. Find a strong signal and avoid movement – Use your phone where reception is good.
8. Metal & water are good conductors of radio waves so avoid using a mobile phone while wearing metal-framed glasses or having wet hair.
9. Let the call connect before putting the handset on your ear or start speaking and listening – A mobile phone first makes the communication at higher power and then reduces power to an adequate level. More power is radiated during call connecting time.
10. If you have a choice, use a landline (wired) phone, not a mobile phone.
11. When your phone is ON, don't carry it in chest/breast or pants pocket. When a mobile phone is ON, it automatically transmits at high power every one or two minutes to check (poll) the network.
12. Reduce mobile phone use by children as a younger person will likely have a longer lifetime exposure to radiation from cell phones.
13. People having active medical implants should preferably keep the cell phone at least 15 cm away from the implant.

Lenovo ZUK

Quick Start Guide

Market Name: Z1 Model: Z1221

Beijing SHENQI Technology Co.,Ltd (“SHENQI”)
A **Lenovo** Company

© Copyright Lenovo 2015.

V1.0_20151103

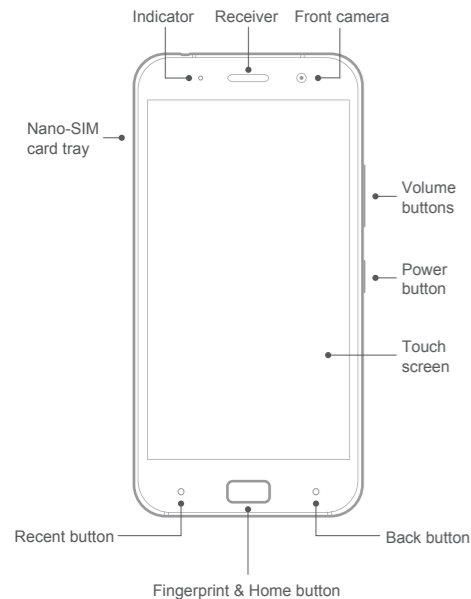
Reduce | Reuse | Recycle



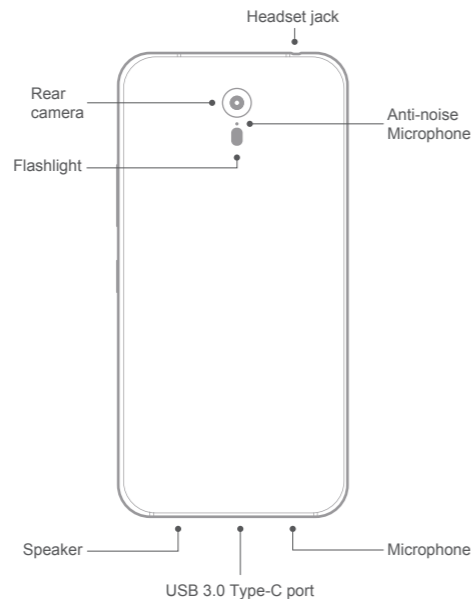
FSC8C00006 YT
Printed in China

Front view

Note: Your phone may look a little bit different from the images in this guide. The images are for your reference only.



Back view



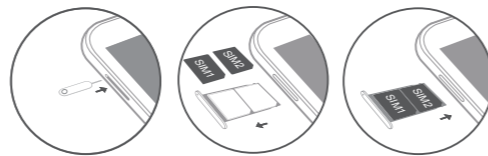
Getting started

Installing the Nano-SIM card

A Nano-SIM card provided by your carrier is required in order to use cellular services.

CAUTION: Use standard Nano-SIM cards only. Inserting a modified card may cause the card to damage the card slot.

1. Insert the SIM eject tool that comes with your phone into the hole in the Nano-SIM card tray.
2. Pull out the card tray and position one or two Nano-SIM cards with the gold contacts facing down into the tray.
3. Insert the card tray back into the slot.



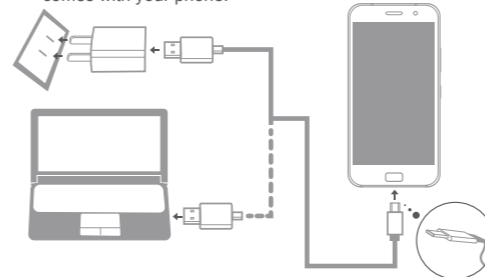
Turning on or turning off your phone

Turn on	Press and hold the Power button until the screen lights up.
Turn off	Press and hold the Power button for a few seconds, then tap Power off .
Restart	Press and hold the Power button for a few seconds, then tap Reboot . To force restart your phone, press and hold the Power button for about 10 seconds.

Charging the battery

Charge the battery by one of the following methods:

- Connect your phone to a power outlet using the cable and USB power adapter that come with your phone.
- Connect your phone to a computer using the cable that comes with your phone.



Low battery power Charging Fully charged

Taking screenshots

Press and hold the Power button and the volume down button at the same time to take a screenshot.

To view the screenshots, open the **Gallery** app and find the **Screenshots** album.

Downloading publications

To obtain the latest publications for your phone, go to <http://support.lenovo.com> and follow the instructions on the screen.

Service and support information

The following information describes the technical support that is available for your product, during the warranty period or throughout the life of your product. Refer to the *Lenovo Limited Warranty* for a full explanation of Lenovo warranty terms. See "Lenovo Limited Warranty notice" later in this document for details on accessing the full warranty.

Online technical support

Online technical support is available during the lifetime of a product at <http://www.lenovo.com/support>.

Telephone technical support

Where applicable, you can get help and information from the Customer Support Center by telephone. Before contacting a Lenovo technical support representative, please have the following information available: model and serial number, the exact wording of any error message, and a description of the problem.

Your technical support representative might want to walk you through the problem while you are at your phone during the call.

Worldwide Lenovo Support telephone list

IMPORTANT: Telephone numbers are subject to change without notice. The most up-to-date telephone list for the Customer Support Center is always available at <http://support.lenovo.com/supportphonenumber>.

The Customer Support Center phone number is subjected to change. For the latest phone number, go to the e-support website. If the telephone number for your country or region is not listed, contact your Lenovo reseller or Lenovo marketing representative.

Warranty information

Lenovo Limited Warranty notice

Read the full *Lenovo Limited Warranty* at <http://support.lenovo.com/smartphone-llw>. You can view the full warranty in a number of languages from this Web site. If you cannot view the full warranty either from the Web site or from your phone, contact your local Lenovo office or reseller to obtain a printed version of the full warranty.

IMPORTANT: Lenovo phone products do not have International Warranty Services.

Warranty period and type of warranty service

Country or Region of Purchase	Warranty Period	Type of Warranty Service
India	Handset - 1 year Charger - 6 months Earphone - 6 months Embedded Battery (within the handset) – 1 year or Removable Battery - 6 months	4

Types of warranty service

1. Customer Replaceable Unit ("CRU") Service
2. On-site Service
3. Courier or Depot Service
4. Customer Carry-In Service
5. Mail-in Service
6. Customer Two-Way Mail-in Service
7. Product Exchange Service

For a full explanation of the types of warranty service, refer to the full warranty.