

## 1 Install the battery:

**Note:** The Pocket PC will not operate if the battery cover is not installed.

**Remove battery cover**

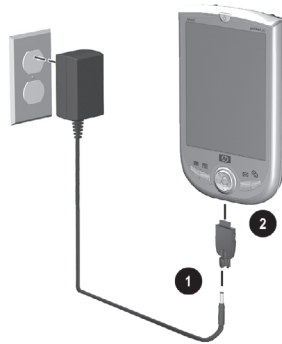
**Insert battery**

**Replace battery cover**



## 2 Charge the unit:

**Note:** Unit must be fully charged before synchronizing with your computer. The amber light is solid when the battery is fully charged.



## 3 Disconnect Pocket PC from AC Adapter:

**Important:** Do not reconnect the Pocket PC to the USB synchronization cable until ActiveSync requests it. ActiveSync must be installed before establishing a partnership with your PC.

## 4 Set up:

With the unit on, follow the on-screen instructions.



## 5 Insert the Companion CD:

Insert the *HP iPAQ Pocket PC Companion CD* into your personal computer and click **Start Here**.

## 6 Install Microsoft Outlook:

Install Microsoft Outlook from your Companion CD onto your personal computer, if necessary.

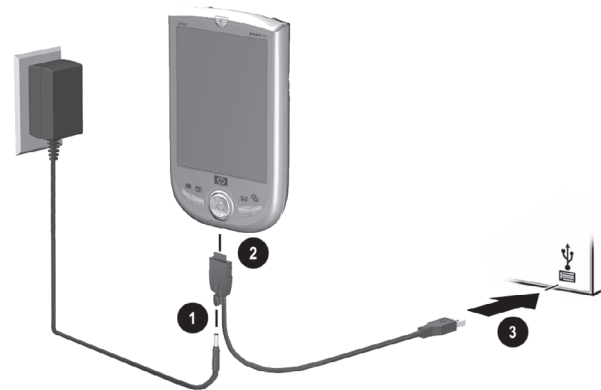
**Note:** Install Outlook if you plan to synchronize e-mail, contacts, calendar, or tasks on your personal computer with your Pocket PC.

## 7 Install ActiveSync 3.7 (or greater):

Click to install the latest version of ActiveSync from your Companion CD and follow the instructions.

## 8 Connect Pocket PC to personal computer:


Insert the AC Adapter plug into an electrical outlet. Connect the AC connector to the USB synchronization cable. Then, connect the USB synchronization cable to the Pocket PC. Finally, connect the USB synchronization cable to the USB port on your personal computer.

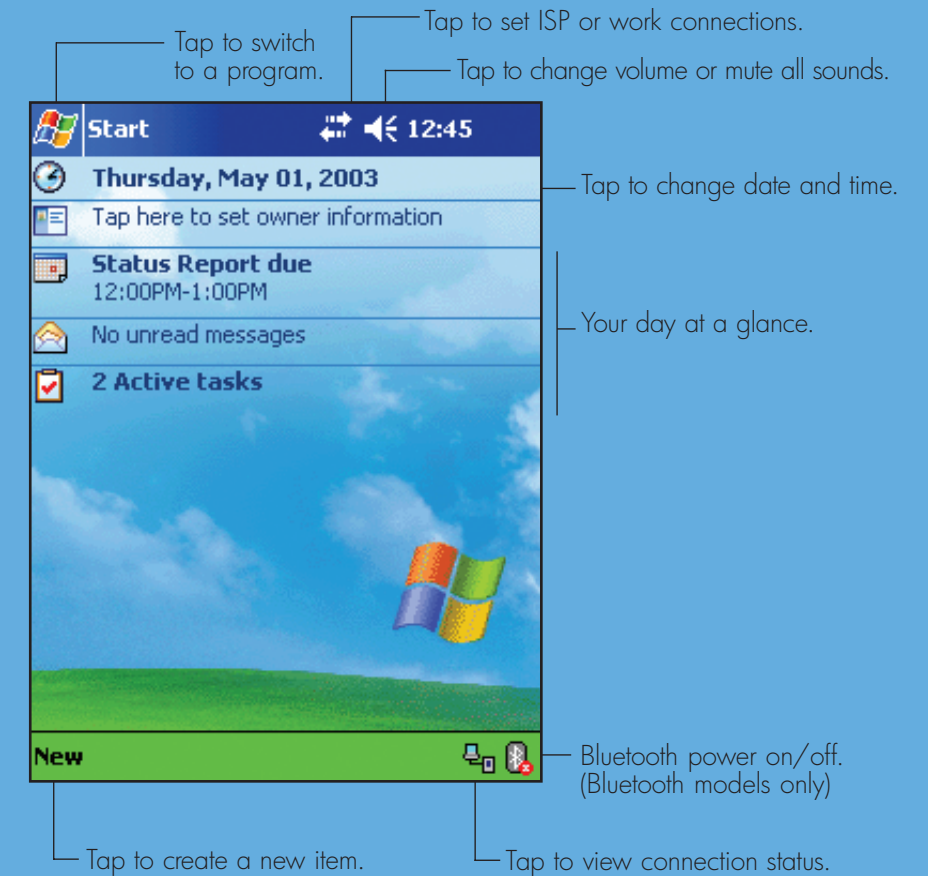


## 9 Establish a partnership:

Follow the on-screen ActiveSync instructions to establish a connection between your Pocket PC and your personal computer.

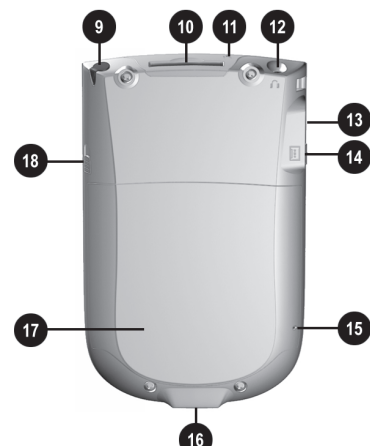
## Today Screen

When you turn on your HP iPAQ Pocket PC for the first time each day (or after 4 hours of inactivity), you see the Today screen. You can also display it by tapping  and then **Today**. On the Today screen, you can see at a glance important information for the day.



**Note:** See the User's Guide on the iPAQ Pocket PC Companion CD for information on using Bluetooth Wireless Technology.

## getting acquainted



1. **Power:** Press to power on/off  
Press and hold to turn backlight on/off
2. **LED Power Indicator:**  
amber flash = charging  
amber solid = charged  
green flash = alarm  
blue flash = Bluetooth active (only on Bluetooth equipped units)
3. **Color Display:** High contrast color screen
4. **Today Button\*:** Display the Today screen to view upcoming appointments, insert messages, and tasks that need to be completed
5. **Inbox\*:** Access your inbox to send and receive e-mail
6. **Navigation:** 5-way Navigation Button:  
Up/Down/Left/Right/Select
7. **Contacts\*:** Display your contacts list
8. **Calendar\*:** Schedule appointments
9. **Stylus:** Slide up to remove, slide down to store
10. **Secure Digital (SD) Slot:** Supports SD storage cards and SDIO cards
11. **Microphone:** Records notes or other sounds
12. **Audio Jack:** Connects 2.5 mm stereo earpiece or headphone (3.5 mm audio jack adapter included)
13. **Infrared:** Beams information between other mobile devices equipped with infrared
14. **Record Button\*:** Turn recording feature on and off. (Press to turn on and release to turn off)
15. **Reset Button:** Resets your Pocket PC
16. **Charging/Communication Port:** Connects to the synchronization cable, AC charger adapter, or optional synchronization cradle
17. **Battery Cover:** Houses the removable, rechargeable battery
18. **Battery Cover Latch:** Latches the battery cover

\*These buttons are programmable but at start-up they are assigned by default.

## troubleshooting and support information

for information on...	see this source...
Using your Pocket PC	<i>HP iPAQ h1900 Series User's Guide</i> on the CD
Connecting to and synchronizing with a personal computer	ActiveSync Help on your computer. To view <b>Help</b> , start ActiveSync, click <b>Help&gt;Microsoft ActiveSync Help</b> .
Troubleshooting on ActiveSync connections	ActiveSync troubleshooter on your computer. Click <b>Help&gt;Troubleshooter</b> .
Programs that are on your Pocket PC	<i>HP iPAQ h1900 Series User's Guide</i> on the CD and Help located on Pocket PC. Tap <b>Start</b> , and then <b>Help</b> .
Additional programs that can be installed on your Pocket PC	<i>HP iPAQ h1900 Series Companion CD</i> or <a href="http://www.microsoft.com/mobile/pocketpc/downloads">http://www.microsoft.com/mobile/pocketpc/downloads</a>
Updates on Windows-powered devices	<a href="http://www.microsoft.com/pocketpc">http://www.microsoft.com/pocketpc</a>
Safety precautions	Important Safety Information document on the CD
Worldwide Limited Warranty	<i>Worldwide Limited Warranty and Technical Support</i> document in the box
Accessory products	Accessories information brochure included with your Pocket PC or <a href="http://www.hp.com/products/pocketpc/options">http://www.hp.com/products/pocketpc/options</a>
Support for your Pocket PC	<a href="http://www.hp.com/support/pocketpc">http://www.hp.com/support/pocketpc</a>
Worldwide telephone support phone numbers	<a href="http://www.hp.com/country/us/eng/wwcontact.html">http://www.hp.com/country/us/eng/wwcontact.html</a>
Registering your Pocket PC to receive e-mail from HP regarding special offers and promotions	<a href="http://www.register.hp.com">http://www.register.hp.com</a>
<b>Note:</b> This is a Class B digital device, pursuant to Part 15 of the FCC Rules. Refer to the documentation CD for Class B information.	

© 2003 Hewlett-Packard Development Company, L.P.  
 HP, Hewlett-Packard, and the Hewlett-Packard logo are trademarks of the Hewlett-Packard Company in the U.S. and other countries.  
 iPAQ is a trademark of the Hewlett-Packard Development Company, L.P. in the U.S. and other countries.  
 Microsoft, Windows, the Windows logo, Outlook, and ActiveSync are trademarks of Microsoft Corporation in the U.S. and other countries.  
 hp iPAQ Pocket PC is Powered by Microsoft Windows. First Edition, May 2003.



337111-001

## getting started

### hp iPAQ Pocket PC h1900 series

