

主机外观图

上市名称: E806



产品概述

整机外形	直板	通信制式	EVDO+GSM双模双待		
SIM卡槽数量	双卡槽	整机长宽厚尺寸	68.53(W) x131(L) x11.3(T)	整机重量(含电池)	141g
硬件平台	MSM8625				

硬件规格

类型	项目	描述
显示屏	尺寸(英寸)	4.3寸
	分辨率	480*800 (WVGA)
	材质	TFT
	连接方式	ZIF
	触摸	电容触摸
	多点触摸	多点
	触摸实现形式	手指
前摄像头	像素	30万
	变焦类型	定焦FF
	连接方式	SMT
后摄像头	像素	500万
	变焦类型	自动变焦AF
	连接方式	socket
电池	电池容量	1800mAh
	接触方式	金手指
	电池类型	锂离子
声音	免提	支持
	喇叭	支持
	喇叭尺寸规格	单喇叭
存储	T卡卡槽	支持
	T卡最大容量	32G
	ROM	4G

	RAM	512M
按 键	主键盘板类型	与触屏集成
	触感按键	支持
	按键LED数量	1颗
	按键LED颜色	白色
FM	FM天线	不支持
	FM外放	不支持
无线通信	蓝牙	支持蓝牙2.1
	NFC	不支持
	GPS	支持
	WiFi	支持802.11g/b/n
灯 光	闪光灯	单LED
	手电筒	支持（共用闪光灯）
	七彩灯	不支持
	紫外验钞灯	不支持
TV	模拟电视	不支持
	数字电视	不支持
	TV-OUT	不支持
传感器	环境光传感器	支持
	接近传感器	支持
	重力传感器	支持
	加速度传感器	支持
	E-compass	不支持
	陀螺仪	不支持
接 口	耳机接口	3.5mm耳机
	充电接口	Micro-USB
	USB接口	Micro-USB
	HDMI/MHL接口	不支持

拆装机注意事项

(此机器与 W806 结构相同，此处可参考 W806 拆卸指导)

一、拆卸注意事项：

- 1、固定后壳的 7 颗螺钉，其中顶部的螺钉相对较短，装配时注意不要弄混
- 2、本手机耳机座为接触式，拆卸时可先插入耳机，向上抬起即可拆下
- 3、拆卸天线小板时可借用镊子插入天线小板孔内，向外移动，然后用镊子取下
- 4、拆卸显示屏前需预热，预热时间 2 分钟，温度 120℃
- 5、拆卸显示屏时需小心，可边拆卸边加热，避免损伤显示屏组件

二、所需工具：

螺丝刀、防静电镊子、塑料镊子、撬棍



电烙铁



二、步骤:



1.) 打开电池盖



2.) 取下电池



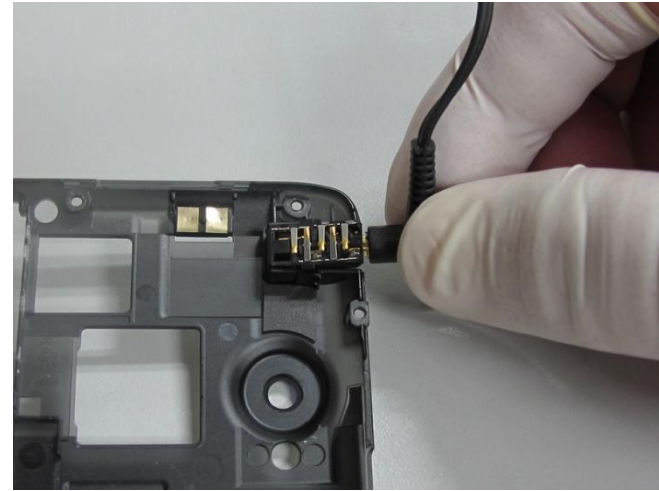
3.) 拧下 7 颗螺钉 (注意手机顶部螺钉与其它螺钉相比较小)



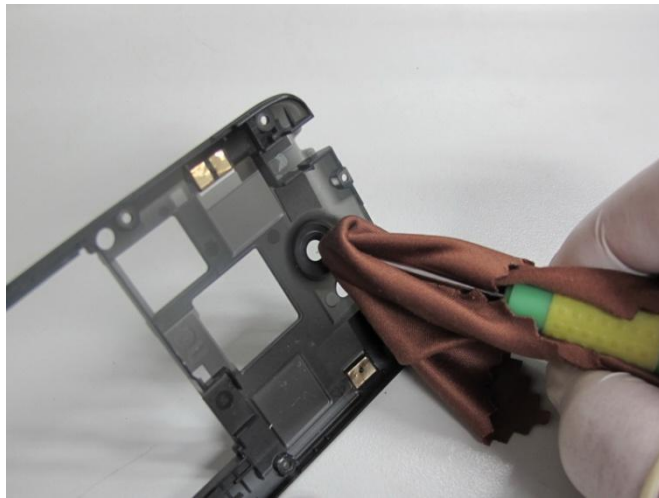
4.) 从机身侧面打开卡扣



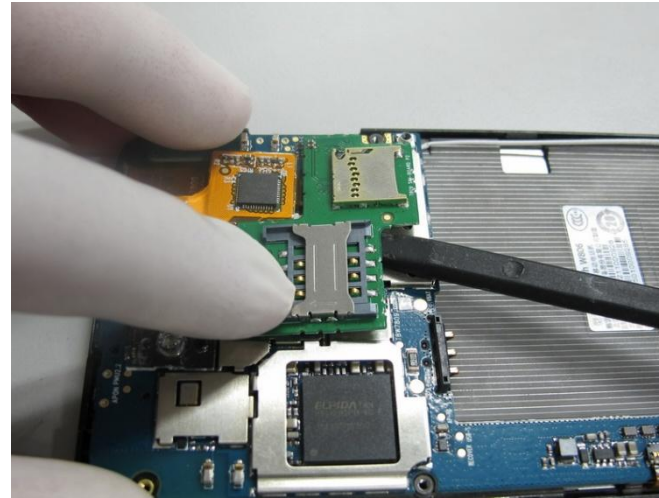
5.) 打开后壳底部卡扣



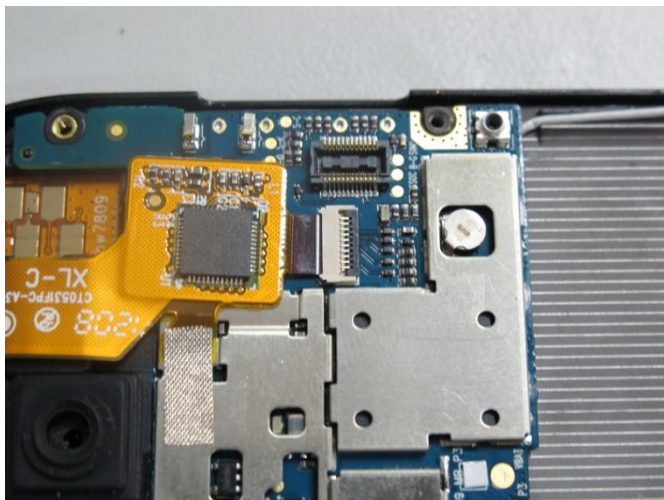
6.) 插入耳机，向上撬起拆下耳机座



7.) 从壳体内部顶开摄像头镜片 (用尖物+无尘布, 避免损伤镜片)



8.) 拆开 SIM 卡小板组件



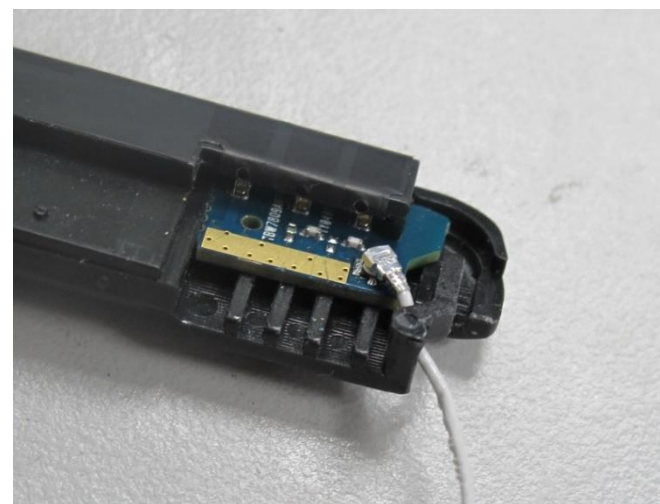
9.) 打开触摸 FPC 接口压片



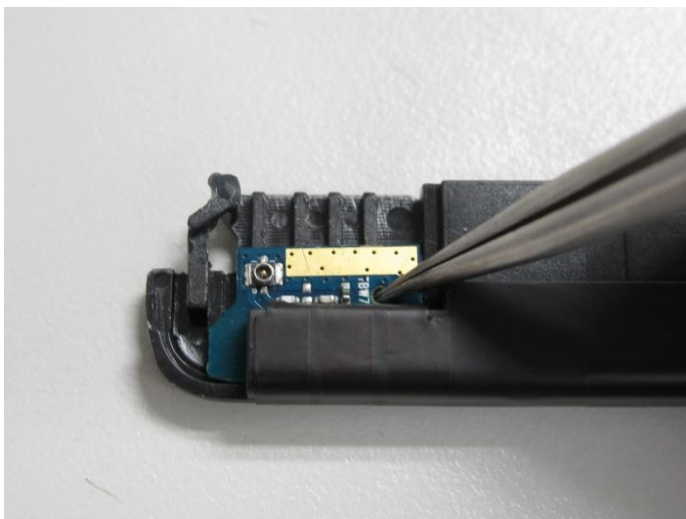
10.) 从接口内取出触摸 FPC



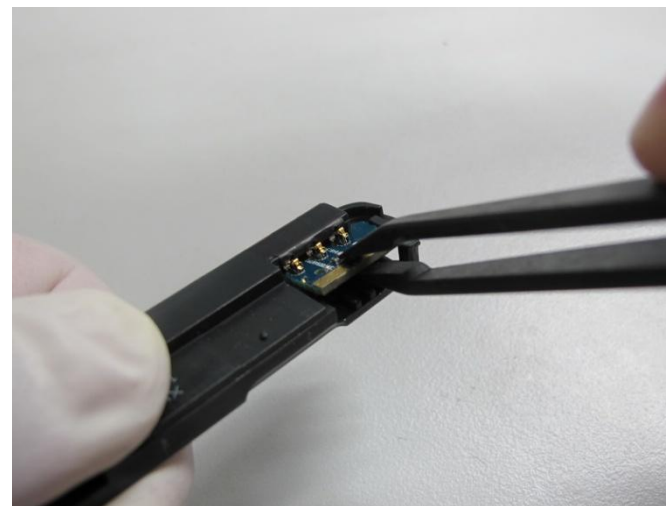
11.) 焊下扬声器导线



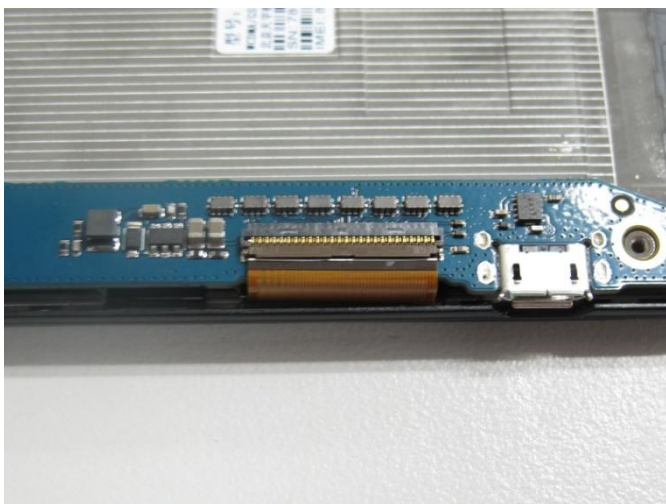
12.) 拆下主天线连接线



13.) 借用镊子插入天线小板孔内，向外移动



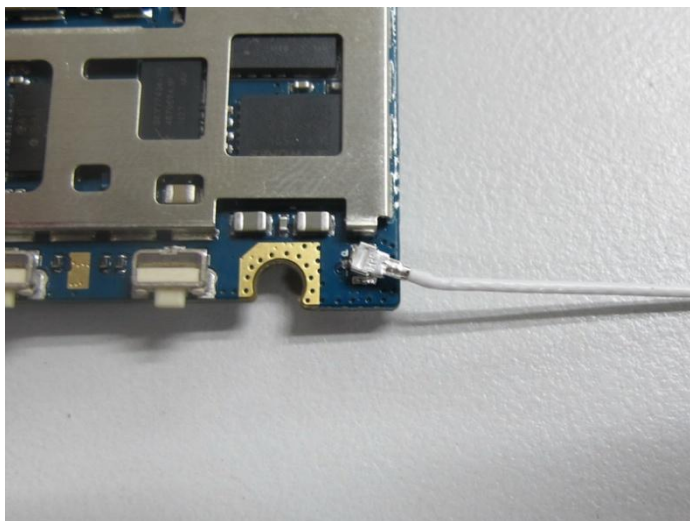
14.) 拆下天线小板组件



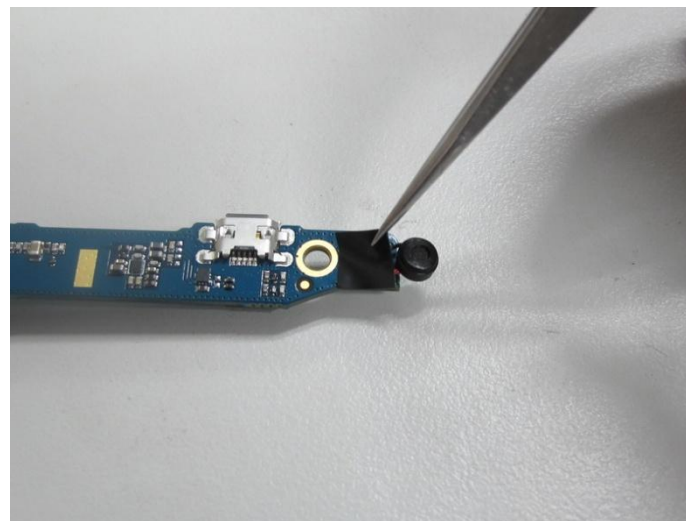
15.) 打开显示屏接口压片，取出 FPC



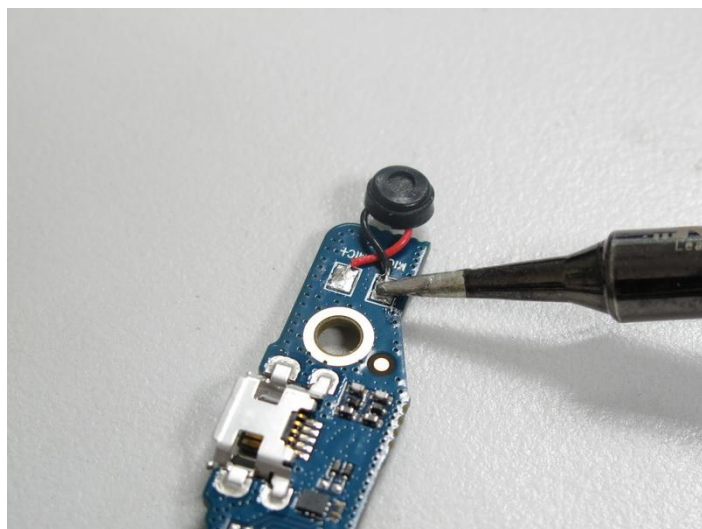
16.) 取下主板组件



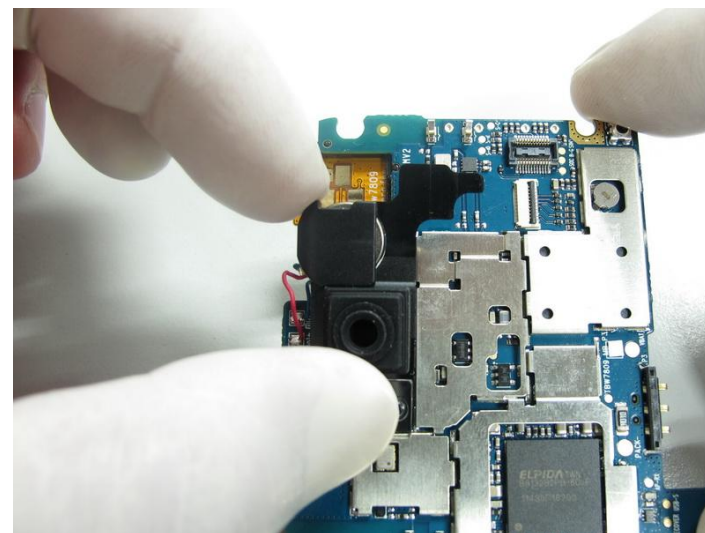
17.) 拆下主天线连接线



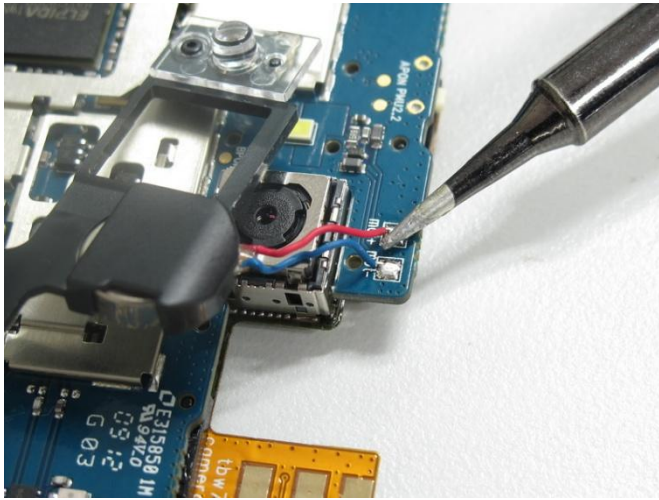
18.) 拆下 MIC 焊盘绝缘膜



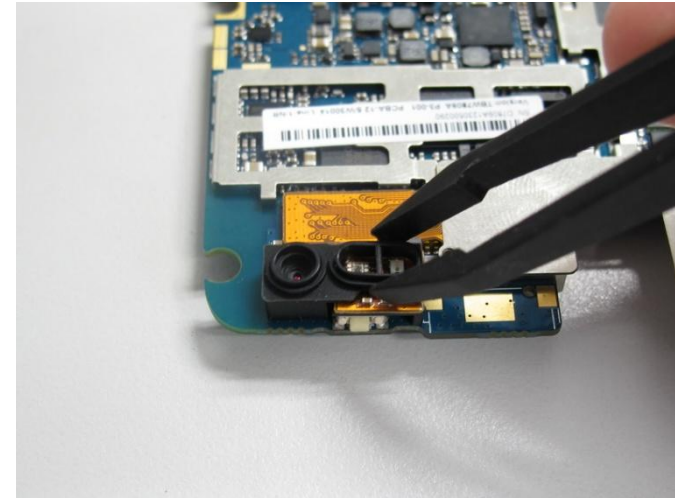
19.) 焊下 MIC 导线



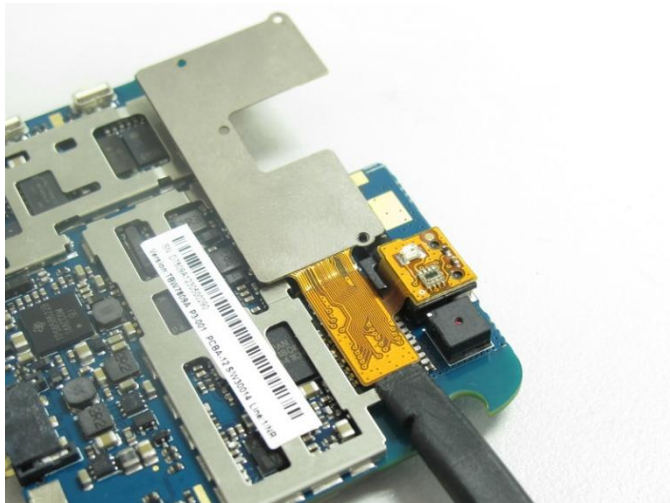
20.) 拆下摄像头支架组件



21.) 焊下振子导线



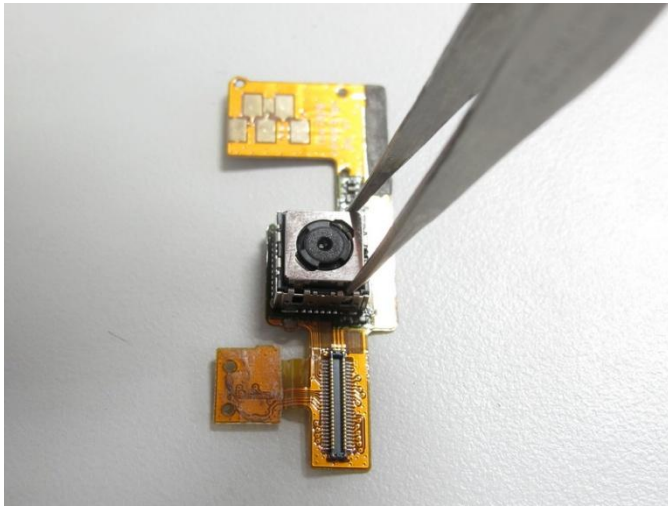
22.) 取下距离传感器硅胶套



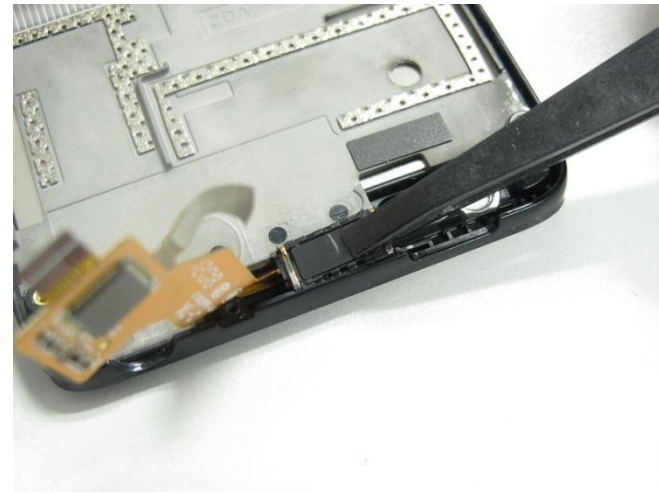
23.) 拆下摄像头 FPCBA 组件



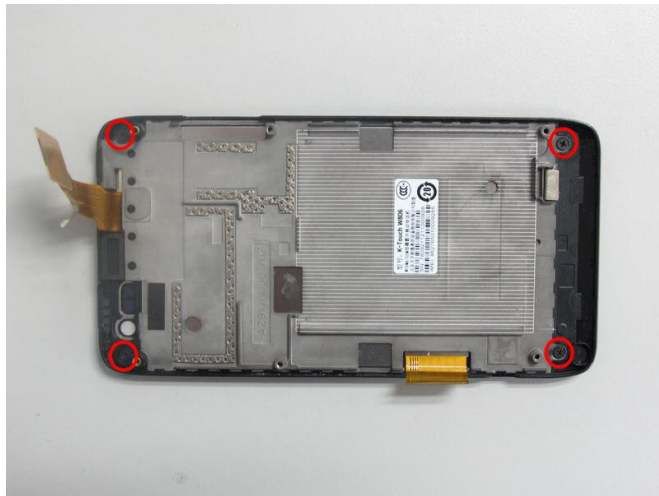
24.) 拆下距离传感器支架组件



25.) 打开固定摄像头四个卡扣，取出摄像头



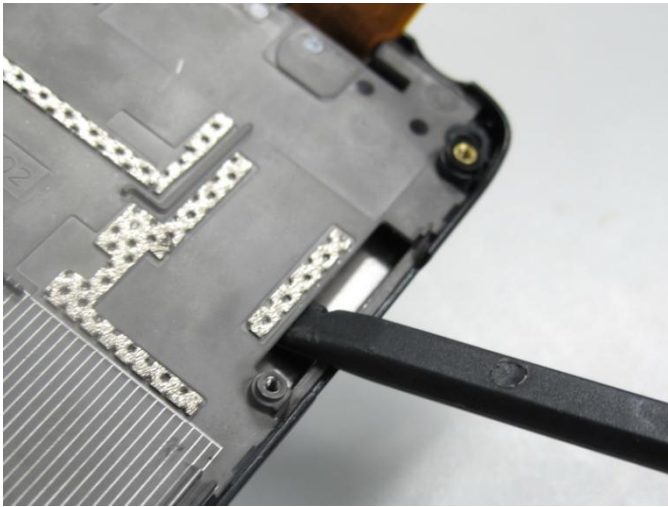
26.) 拆下受话器组件



27.) 拧下固定显示屏 4 颗螺钉



28.) 拆卸显示屏前需预热，预热时间 2 分钟，温度 120°C



29.) 从侧面插入撬棍，分离显示屏



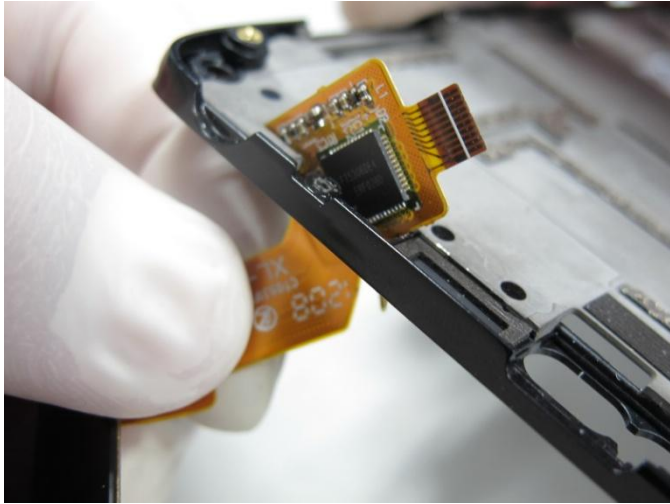
30.) 随着上一步的操作，此处会翘起，同样插入撬棍，慢慢分离显示屏



31.) 随着上一步的操作，此处会翘起，同样插入撬棍，拆下显示屏组件



32.) 显示屏上端凸起钢片，装配时首先安装显示屏上端



33.) 从前壳孔内拆出触摸 FPC



34) 全家福

特殊物料识别



名称：显示屏

描述：显示屏组件包括液晶显示部分、电容触摸屏部分

料号：TYC5926A0800T



名称：前壳组件

料号：TYC7809A010111



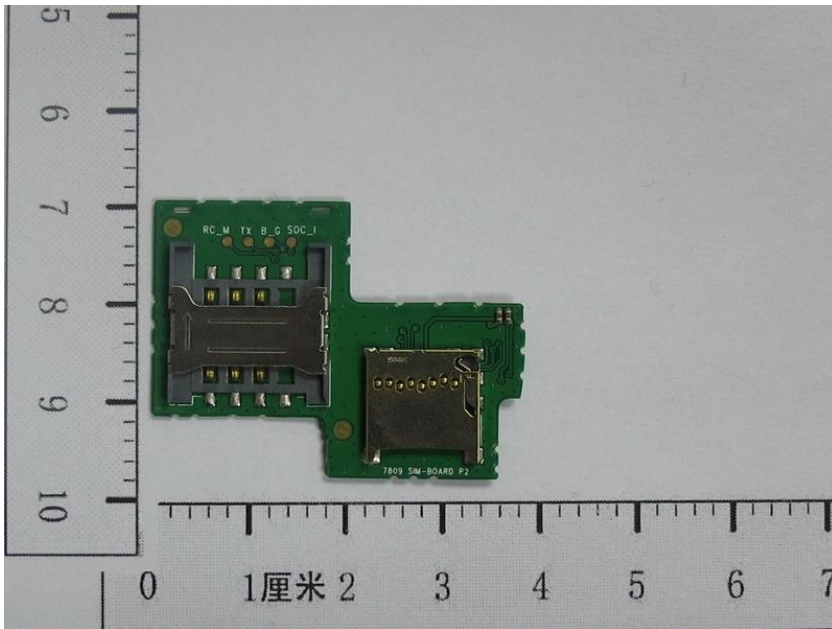
名称：后壳组件

料号：TYC5929A020111



名称：电池盖

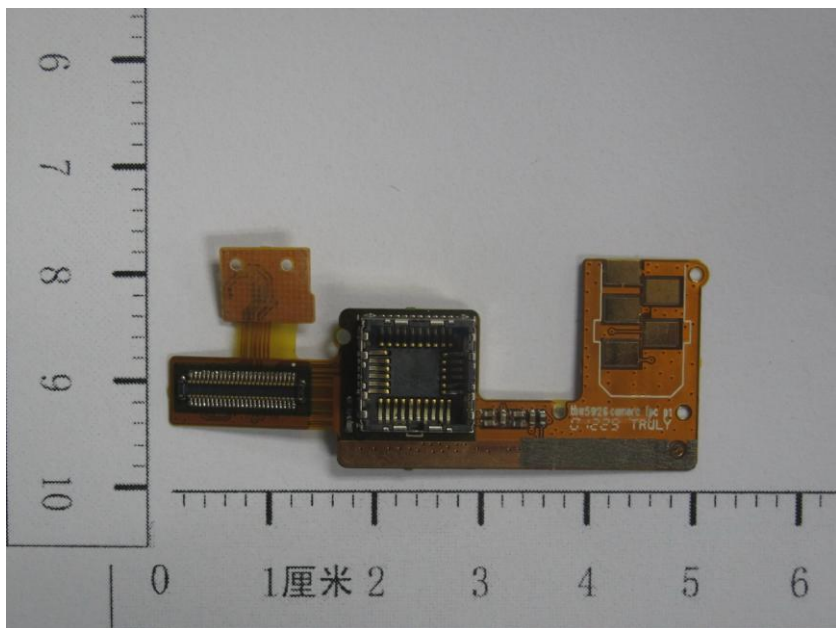
料号：TYC5926A050111



名称：副板

描述：SIM、T卡小板

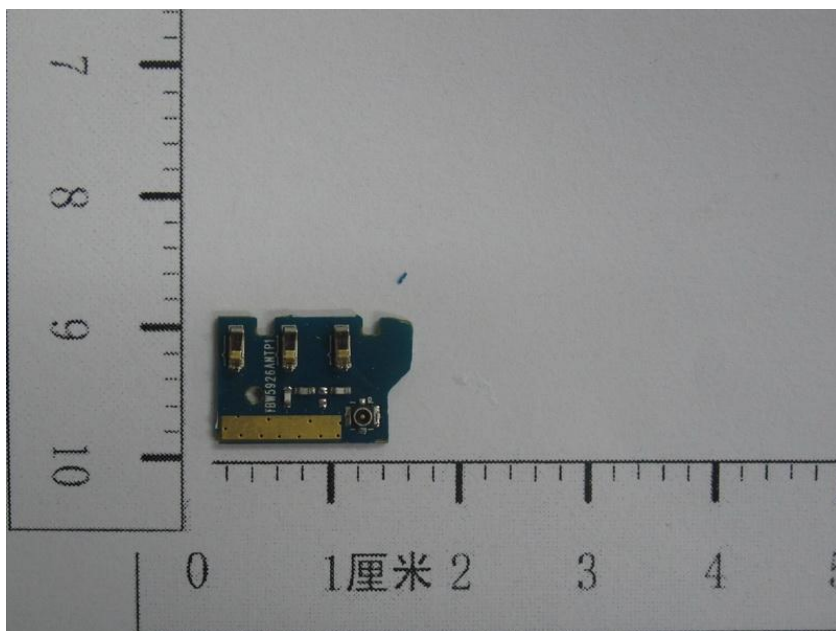
料号：TYC592680410114



名称：摄像头 FPC 小板

描述：此小板包含临近传感器、光线传感器

料号：TYC592680420511



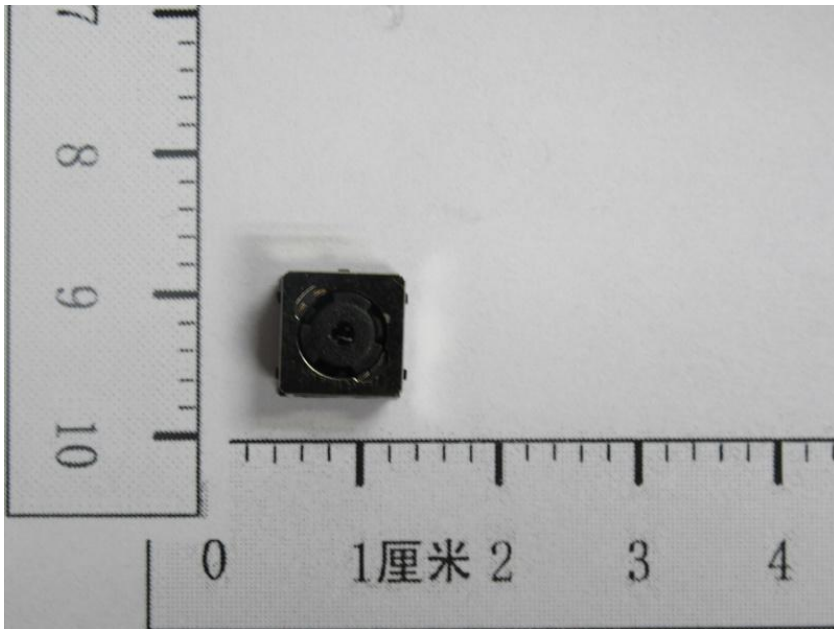
名称：天线小板

料号：TYC592980410110



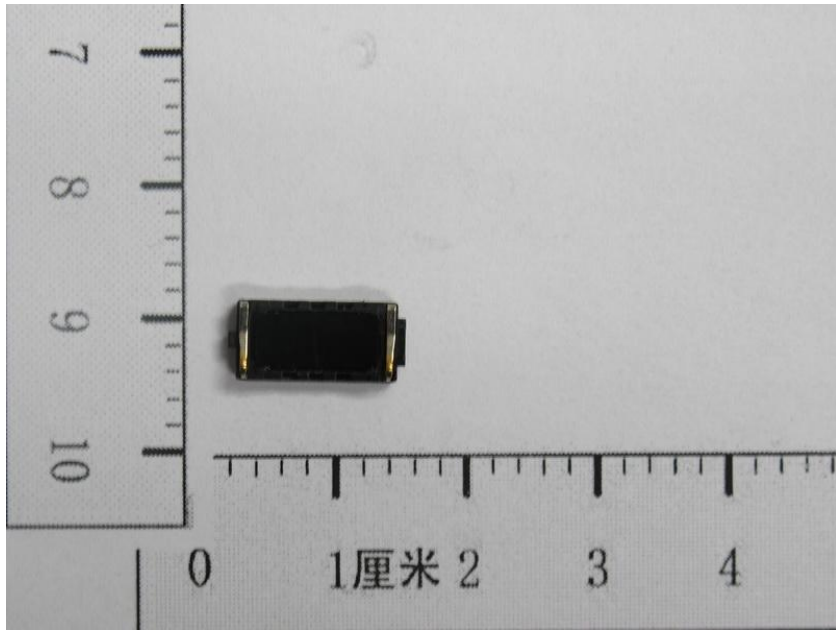
名称：主天线组件

料号：TYC7809A1601K8



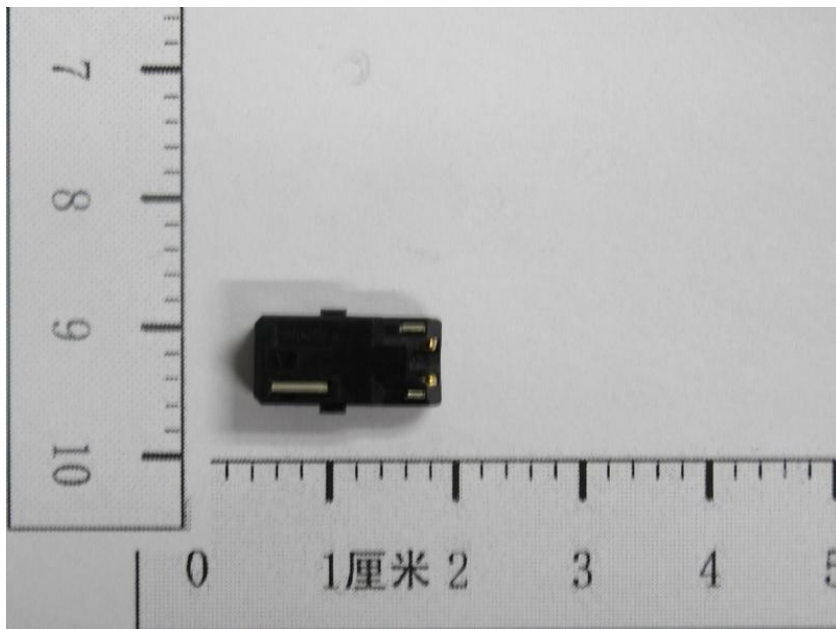
名称：摄像头

料号：TYC500SA1148T



名称：受话器

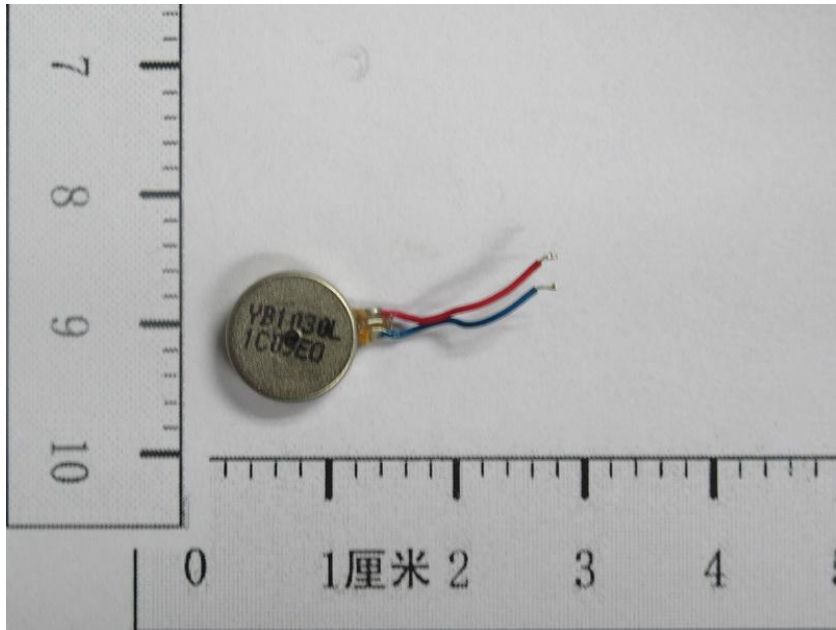
料号：TYC7802A1300K8



名称：耳机座

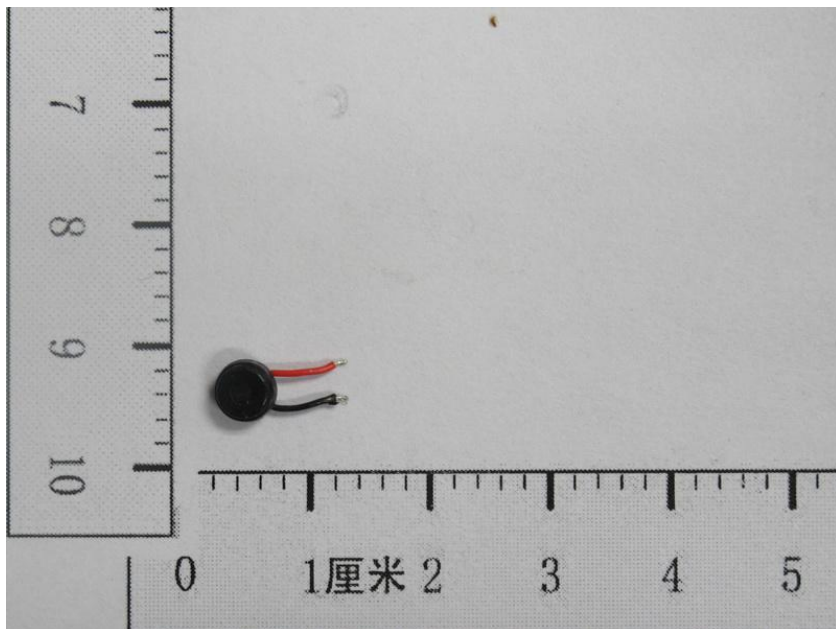
描述：压接式耳机座

料号：TY01206670



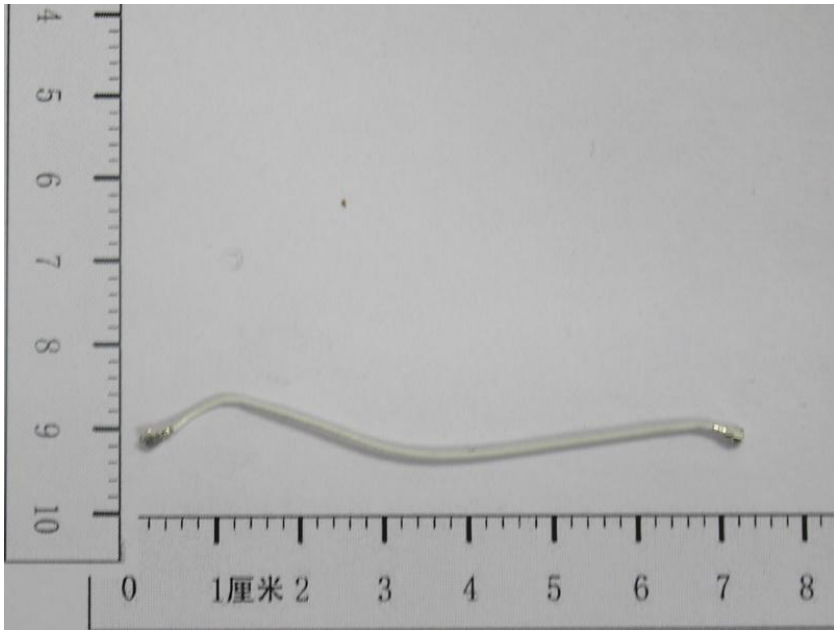
名称：振子

料号：TYC7802A150060



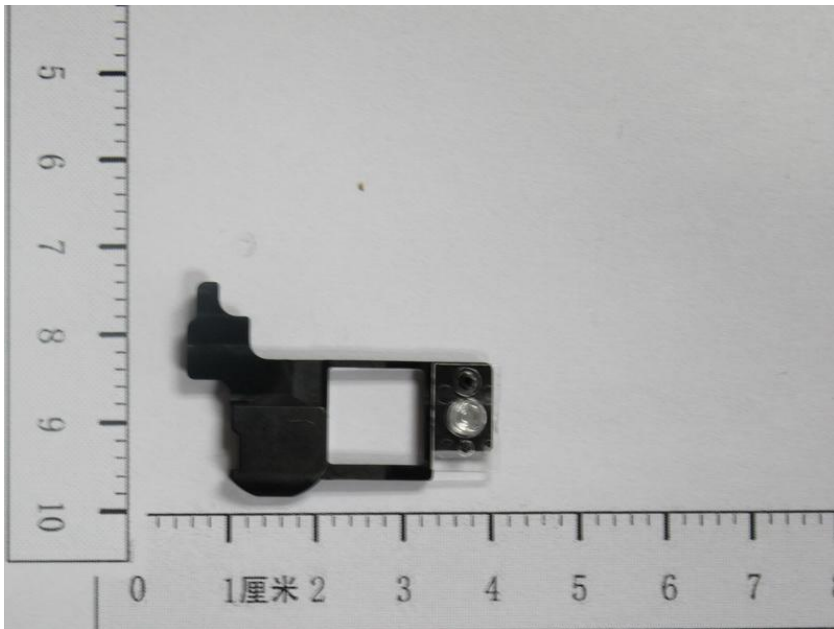
名称：MIC

料号：TYC880080500010



名称：天线连接线（cable 线,线长 72mm）

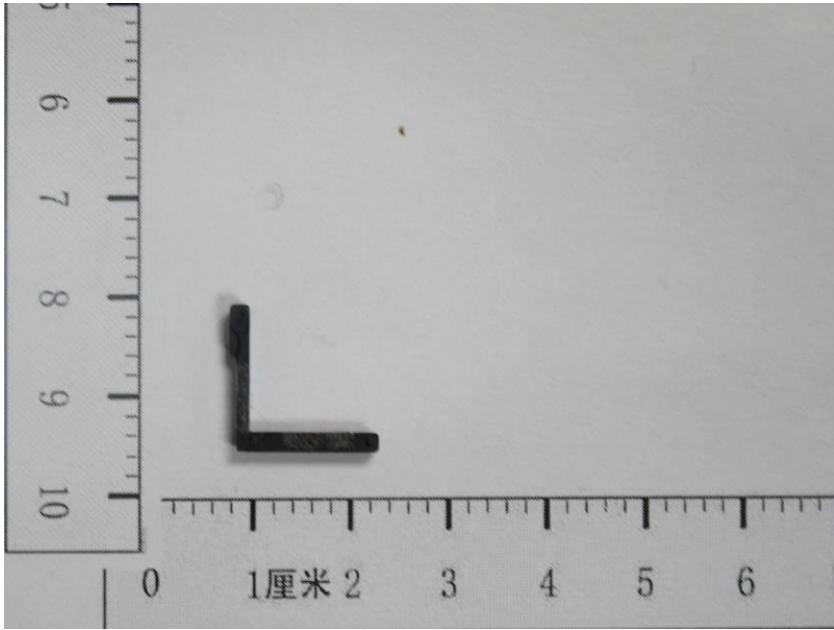
料号：TYC7809A200096



名称：摄像头支架组件

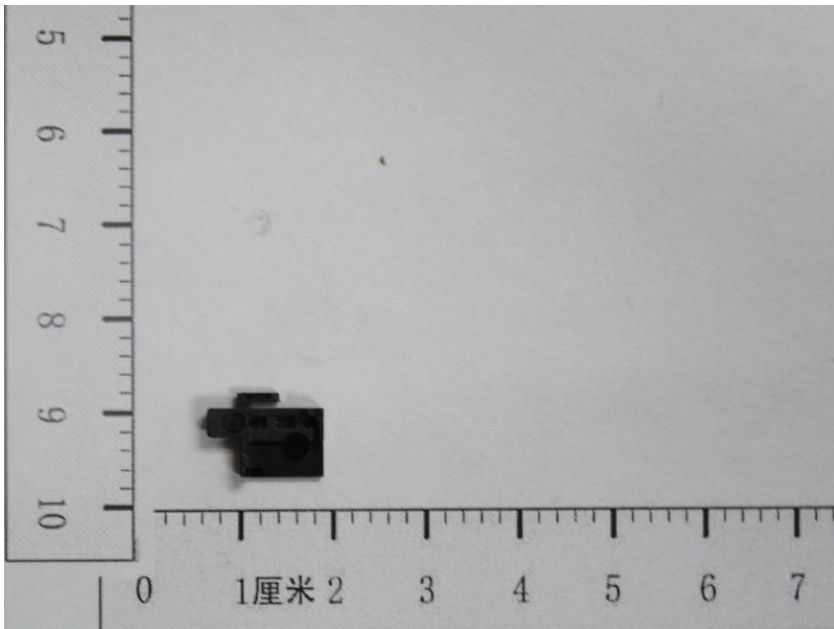
描述：摄像头支架+闪光灯 Lens

料号：TYC7809A280611



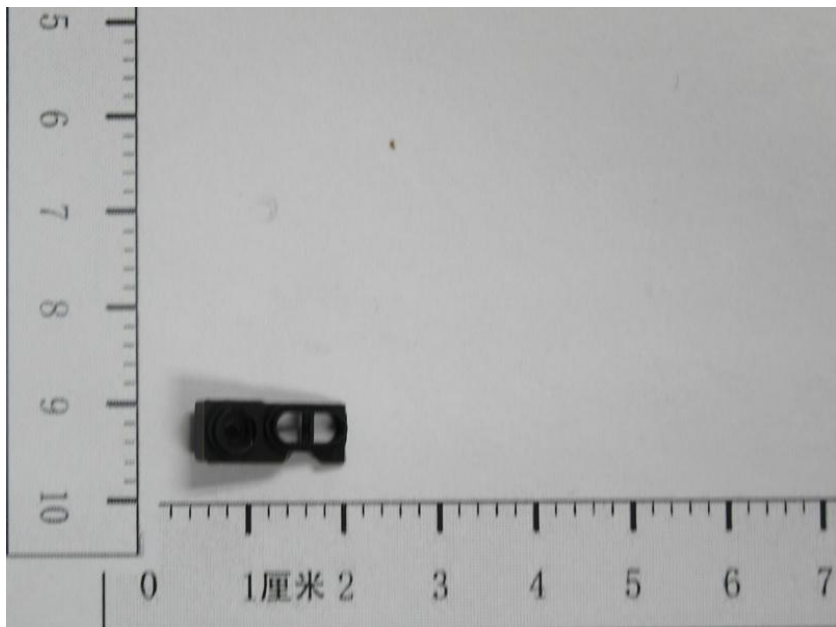
名称：摄像头 FPC 支架组件

料号：TYC7809A280011



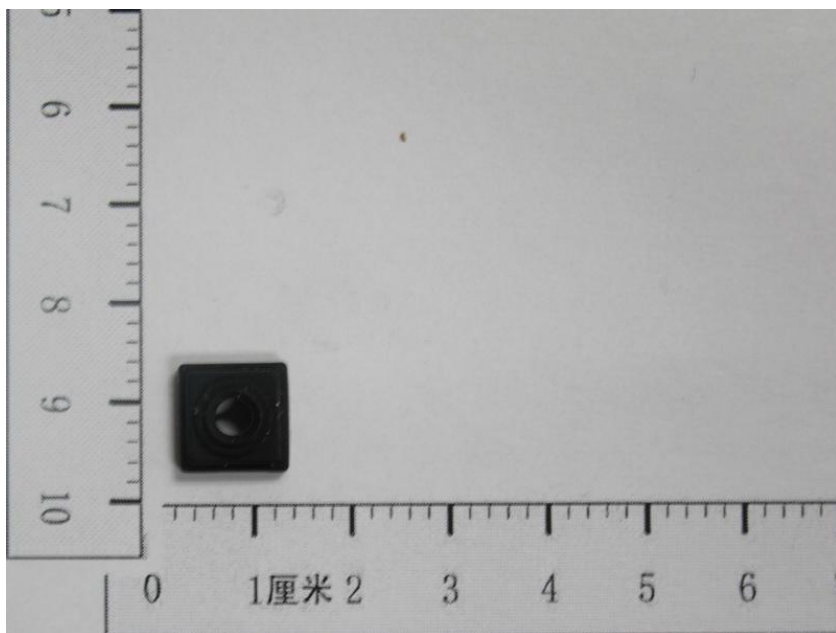
名称：距离传感器支架

料号：TYC7809A280111



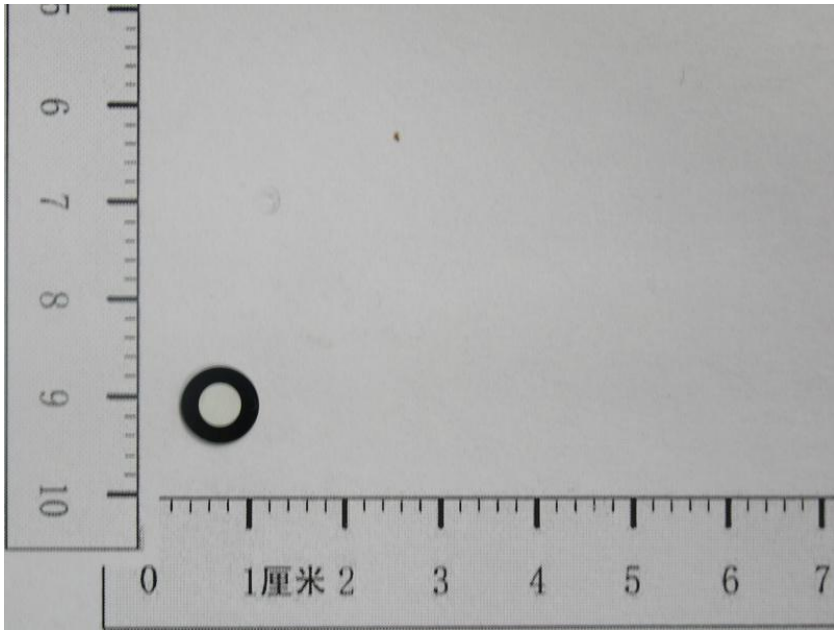
名称：距离传感器硅胶套

料号：TYC7809A230150



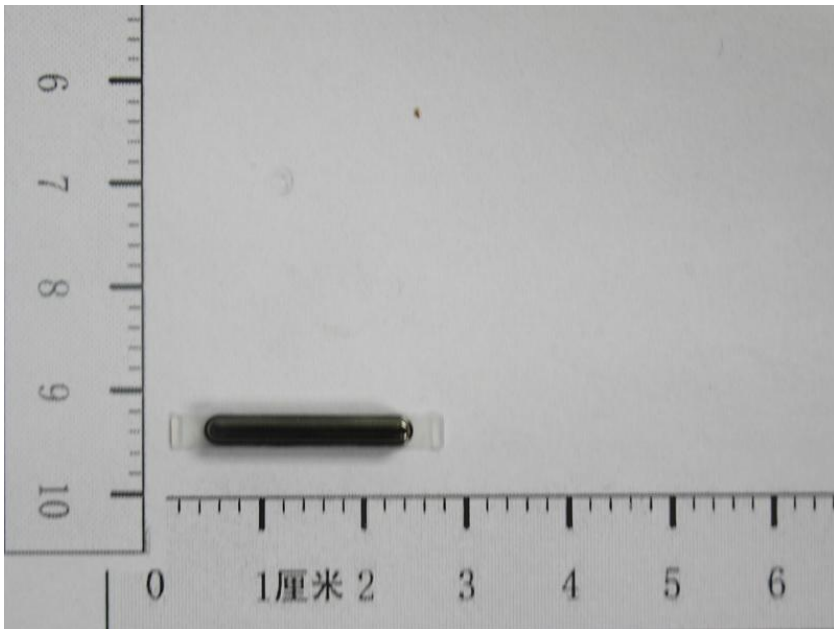
名称：摄像头硅胶套

料号：TYC7809A230050



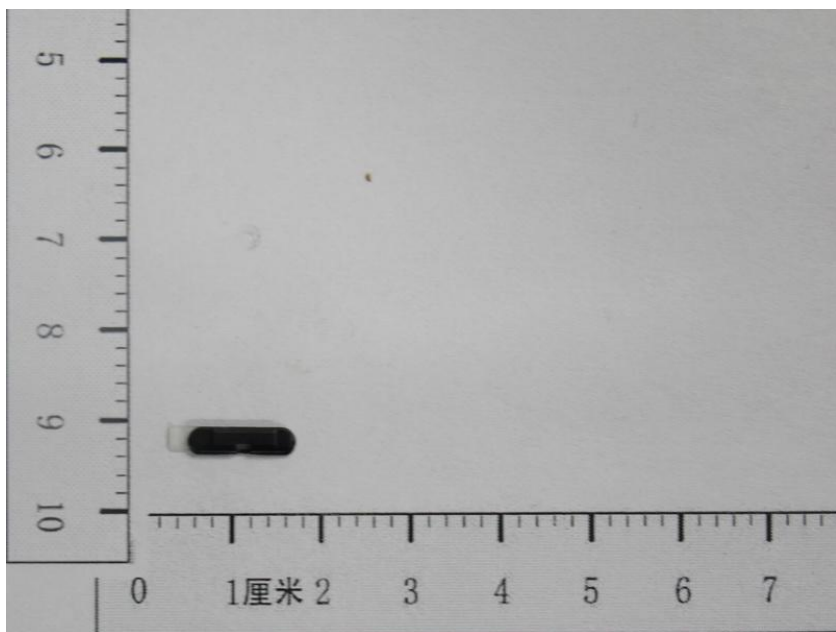
名称：摄像头镜片

料号：TYC7802A070121



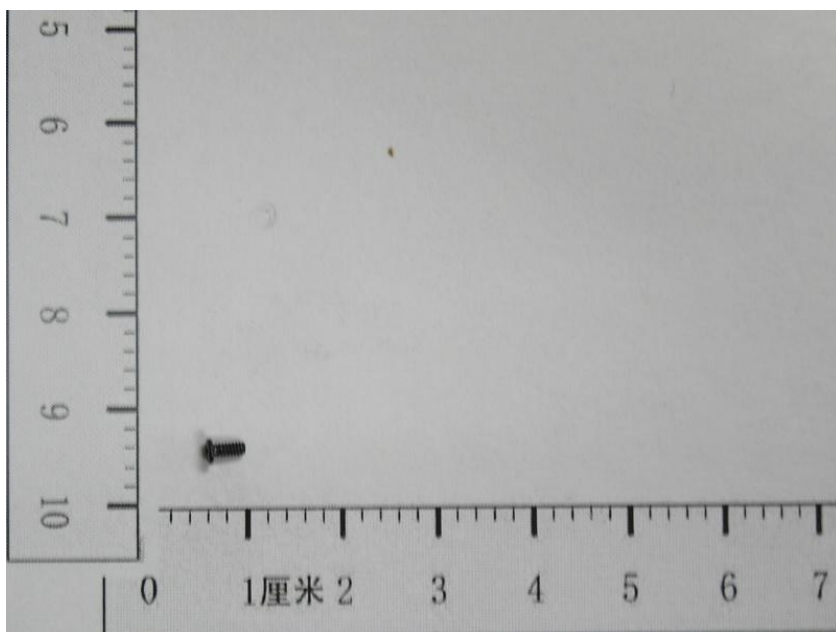
名称：音量键组件

料号：TYC7809A060024



名称：开关机键组件 2

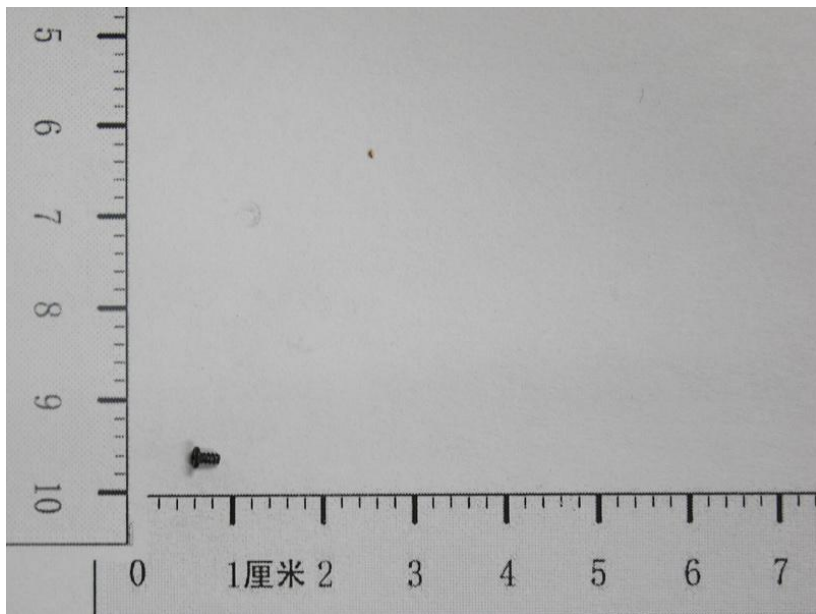
料号：TYC7809A060224



名称：螺钉（固定后壳的 6 颗螺钉）

规格：M1.6*3.5*2.8*0.5

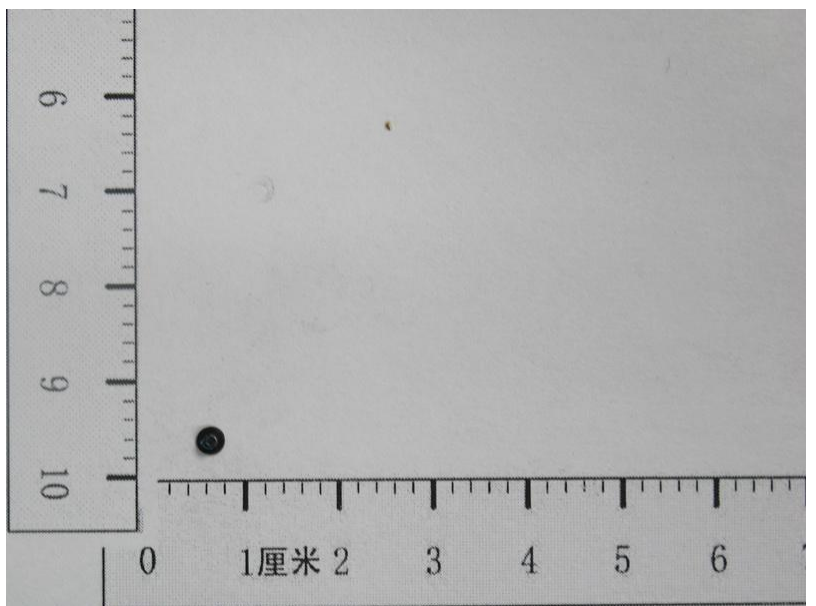
料号：TYC7809A190069



名称：螺钉（后壳顶部螺钉）

规格：ST1.4*2.5*2.5*0.5

料号：TYC6319A1901



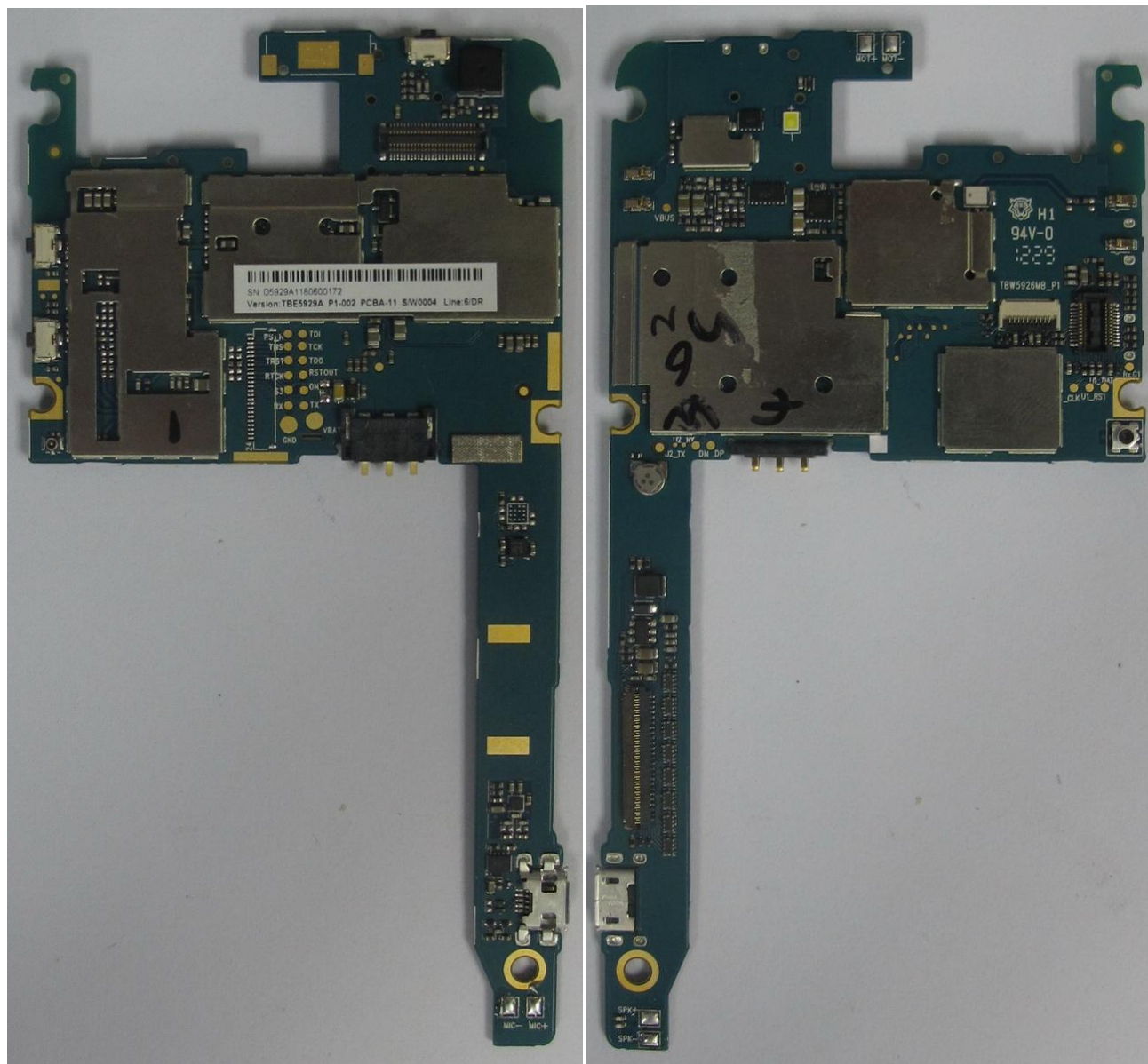
名称：触摸屏螺钉

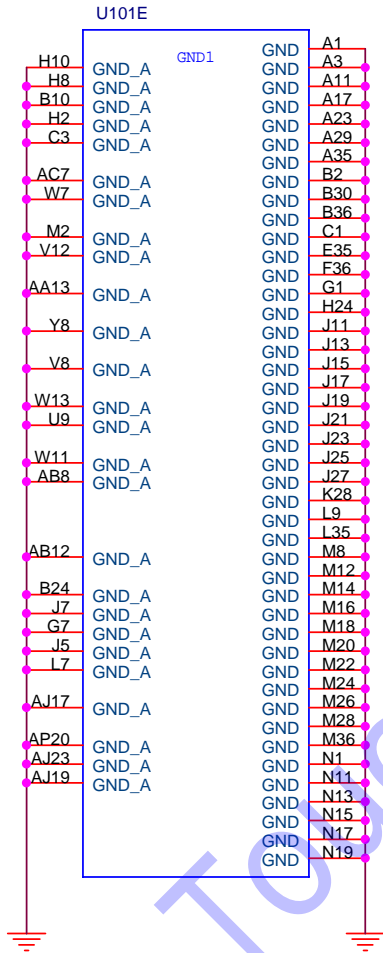
规格：M1.4*1.55*3.0*0.5

料号：TYC1248A1900

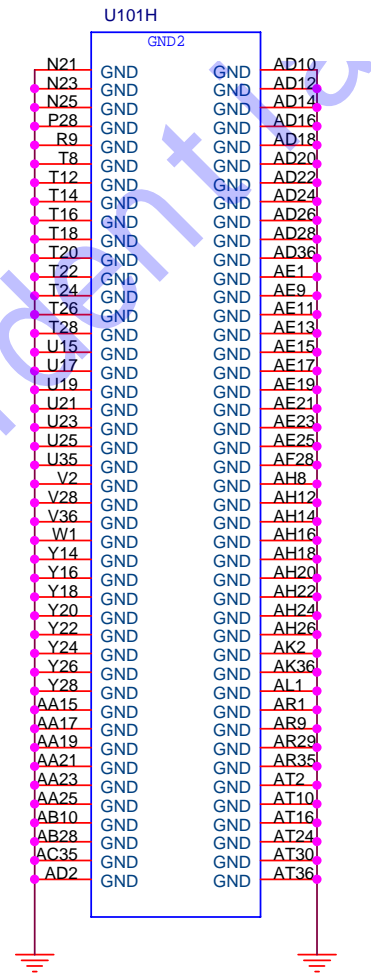
主板外观图

TBW5926 P1





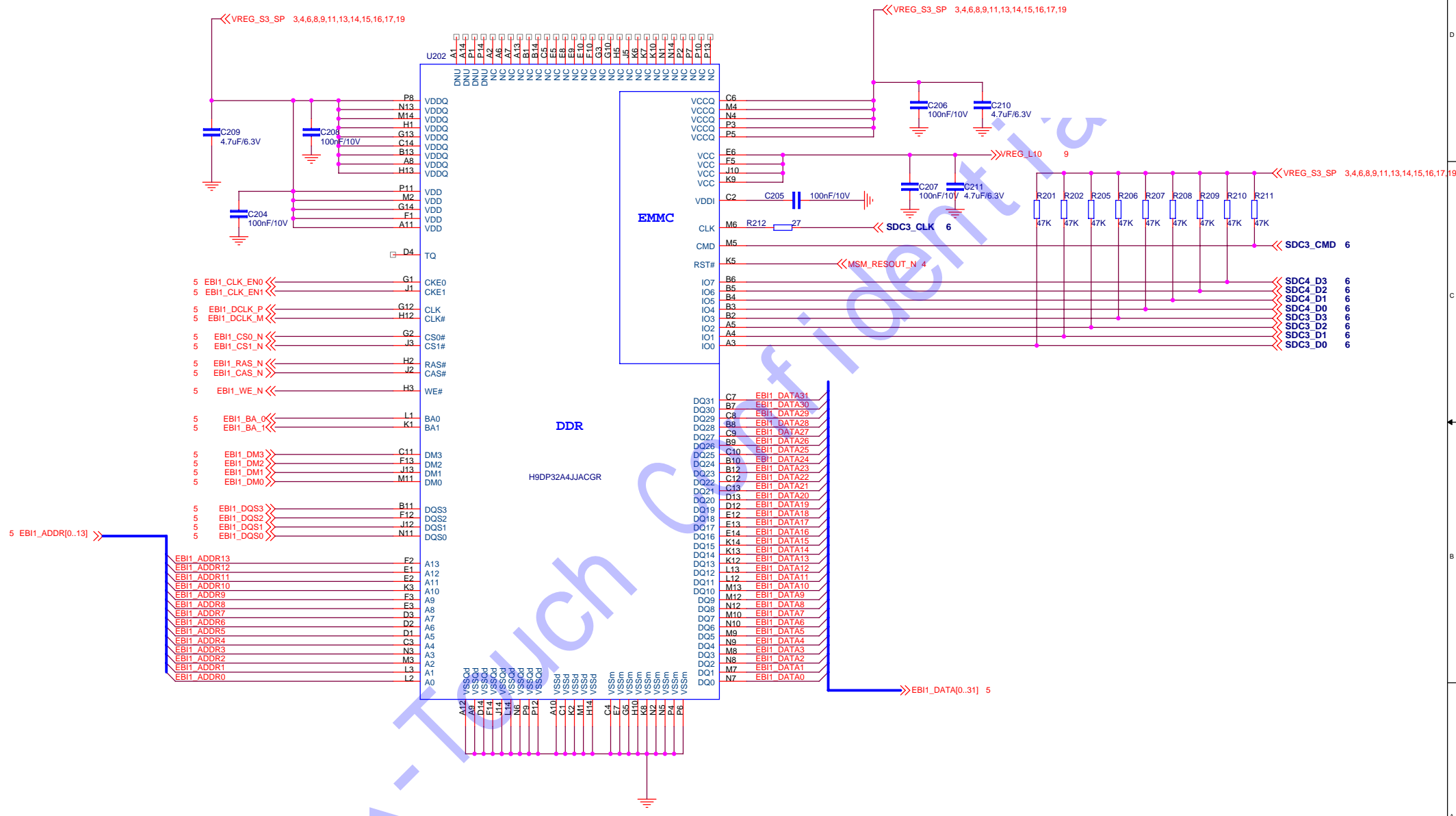
MSM-7227A-1-576NSP-TR-00-0



MSM-7227A-1-576NSP-TR-00-0

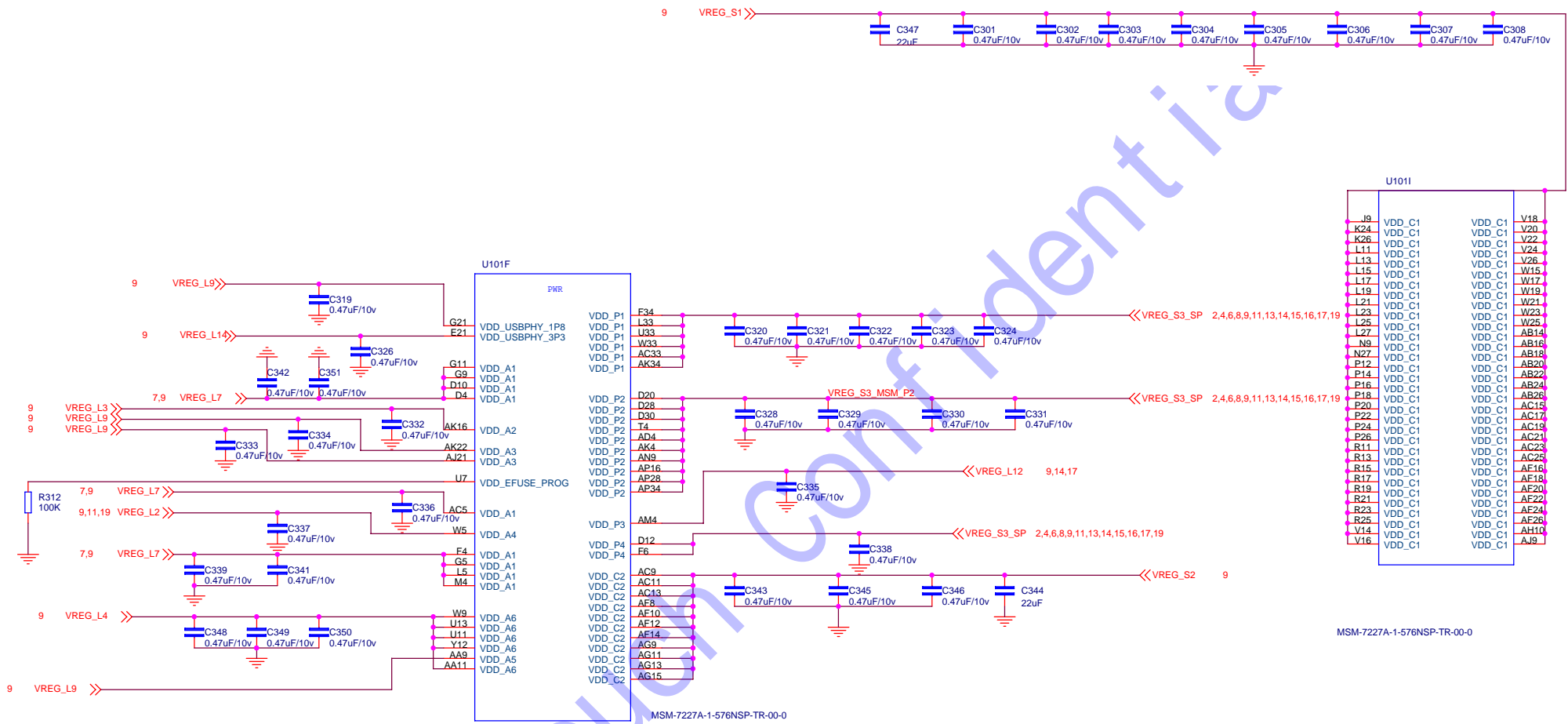
<Core Design>

Title		
7225A GND AND NC		
Size	Document Number	Rev
A4	TBW5926	P1
Date:	Friday, June 08, 2012	Sheet 1 of 20



<Core Design>

Title		
MEMORY		
Size	Document Number	Rev
A3	TBW5926	P1
Date:	Friday, June 08, 2012	Sheet 2 of 20



U1011

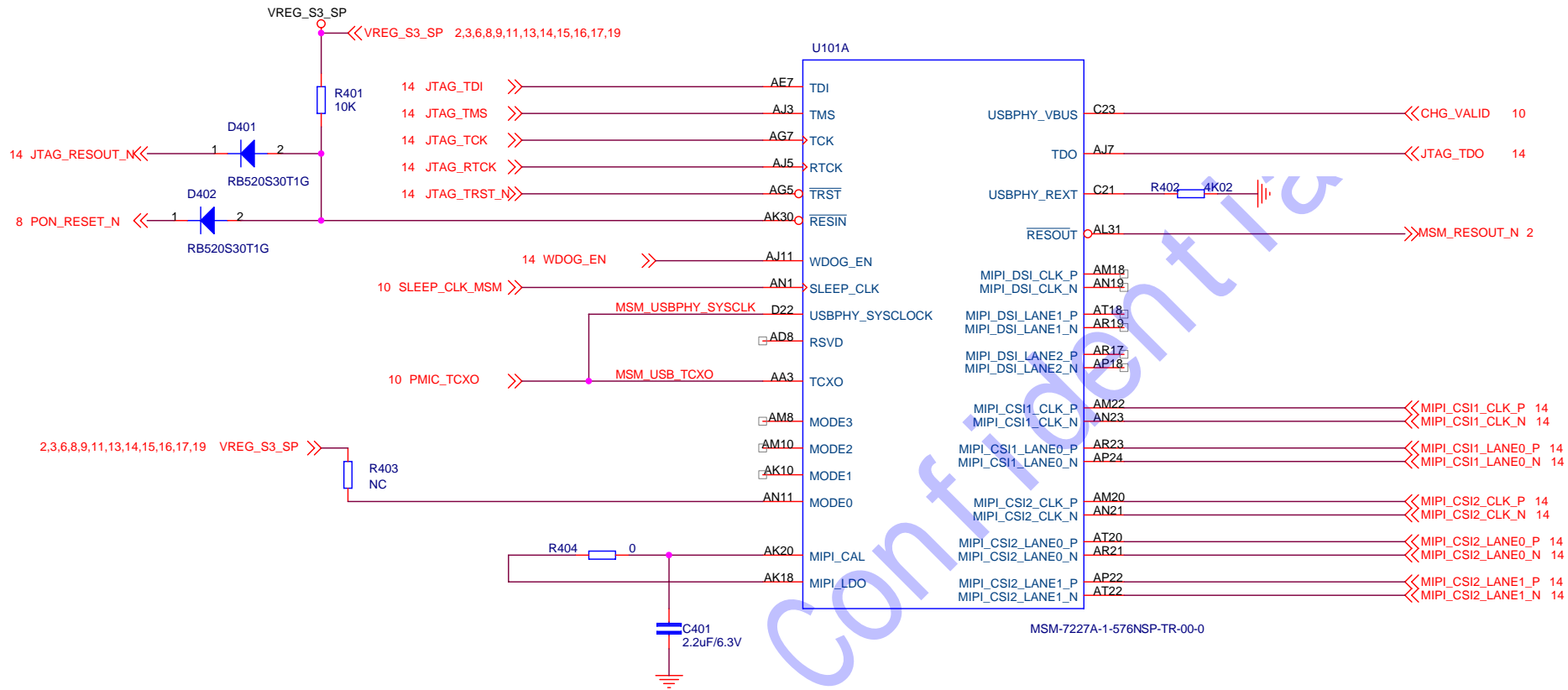
J9	VDD_C1	V18
K24	VDD_C1	V20
K26	VDD_C1	V22
L11	VDD_C1	V24
L13	VDD_C1	V26
L15	VDD_C1	V28
L17	VDD_C1	W17
L19	VDD_C1	W19
L21	VDD_C1	W21
L23	VDD_C1	W23
L25	VDD_C1	W25
L27	VDD_C1	AB14
N9	VDD_C1	AB16
N12	VDD_C1	AB18
P12	VDD_C1	AB20
P14	VDD_C1	AB22
P16	VDD_C1	AB24
P18	VDD_C1	AB26
P20	VDD_C1	AC15
P22	VDD_C1	AC17
P24	VDD_C1	AC19
P26	VDD_C1	AC21
R11	VDD_C1	AC23
R13	VDD_C1	AC25
R15	VDD_C1	AF16
R17	VDD_C1	AF18
R19	VDD_C1	AF20
R21	VDD_C1	AF22
R23	VDD_C1	AF24
R25	VDD_C1	AF26
R14	VDD_C1	AH10
V16	VDD_C1	AJ9

MSM-7227A-1-576NSP-TR-00-0

MSM-7227A-1-576NSP-TR-00-0

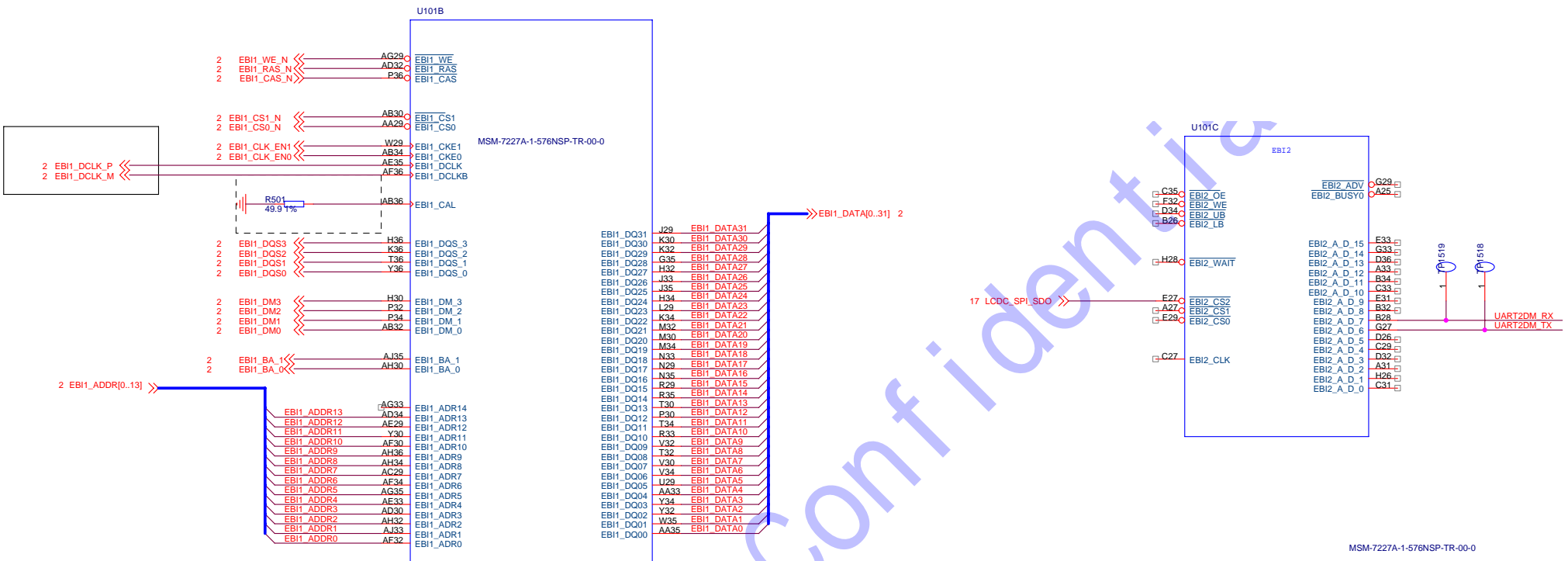
<Core Design>

Title		
7227A PWR		
Size	Document Number	Rev
A3	<Doc>	P1
Date:	Friday, June 08, 2012	Sheet 3 of 20



<Core Design>

Title			04 MSM7227A CONTROL
Size	Document Number		Rev
Custom<Doc>			P1
Date:	Friday, June 08, 2012	Sheet	4 of 20



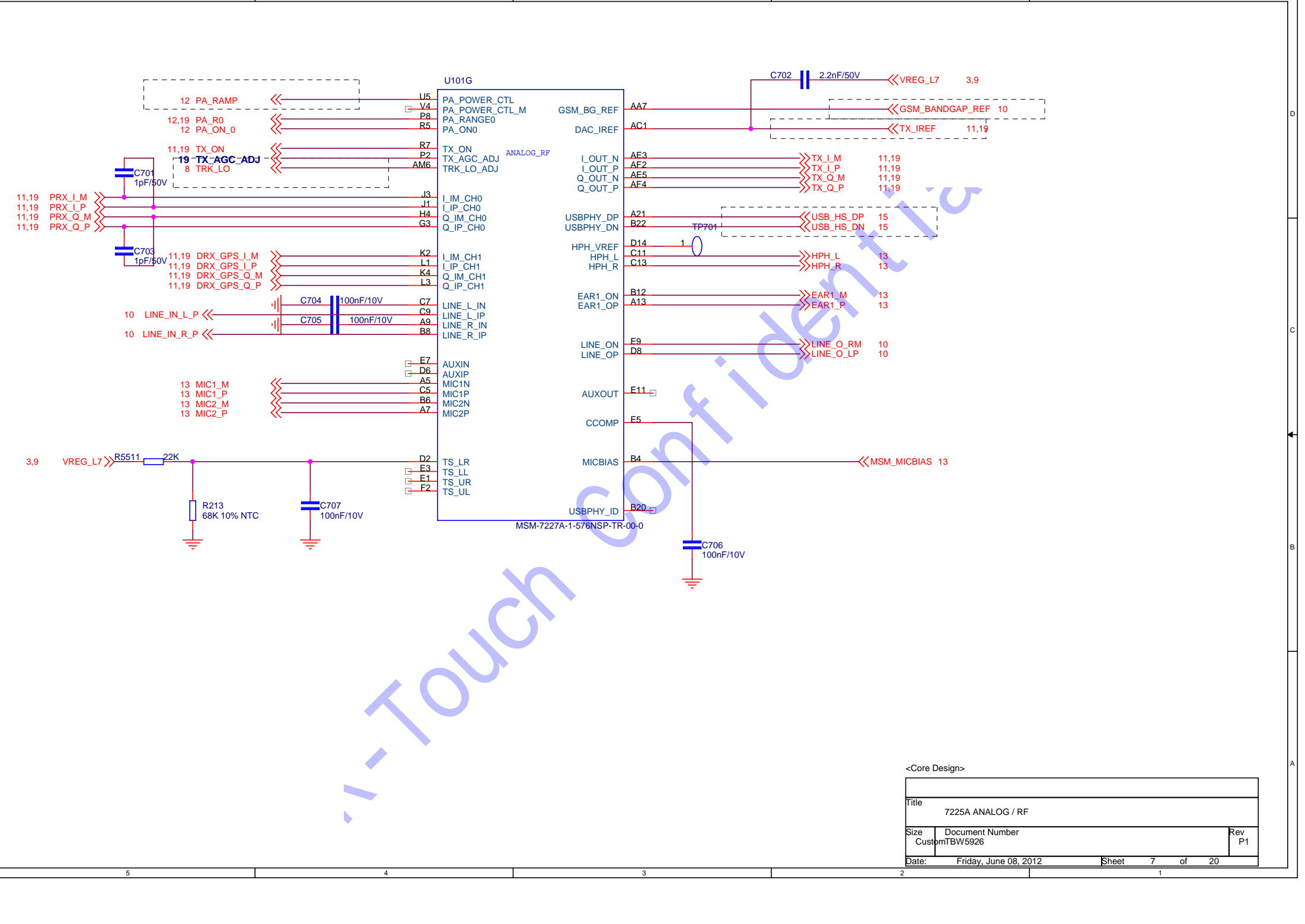
MSM-7227A-1-576NSP-TR-00-0

<Core Design>			
Title			
05 MSM7227A EBI1/EBI2			
Size	Document Number	Rev	
Custom<Doc>		P1	
Date:	Friday, June 08, 2012	Sheet	5 of 20



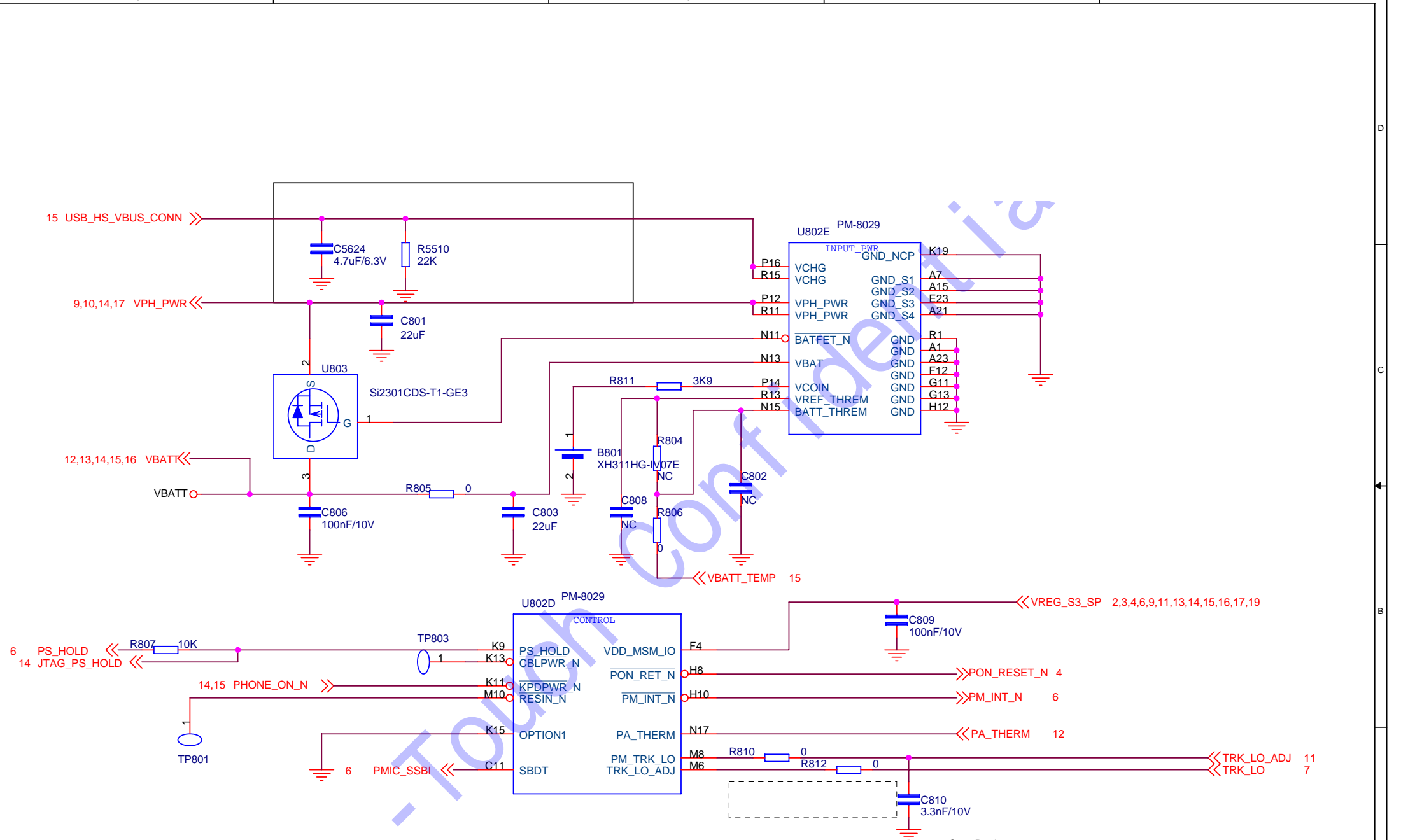
<Core Design>

Title		
06 MSM7227A GPIO		
Size	Document Number	Rev
A3	<Doc>	P1
Date:	Friday, June 08, 2012	Sheet 6 of 20



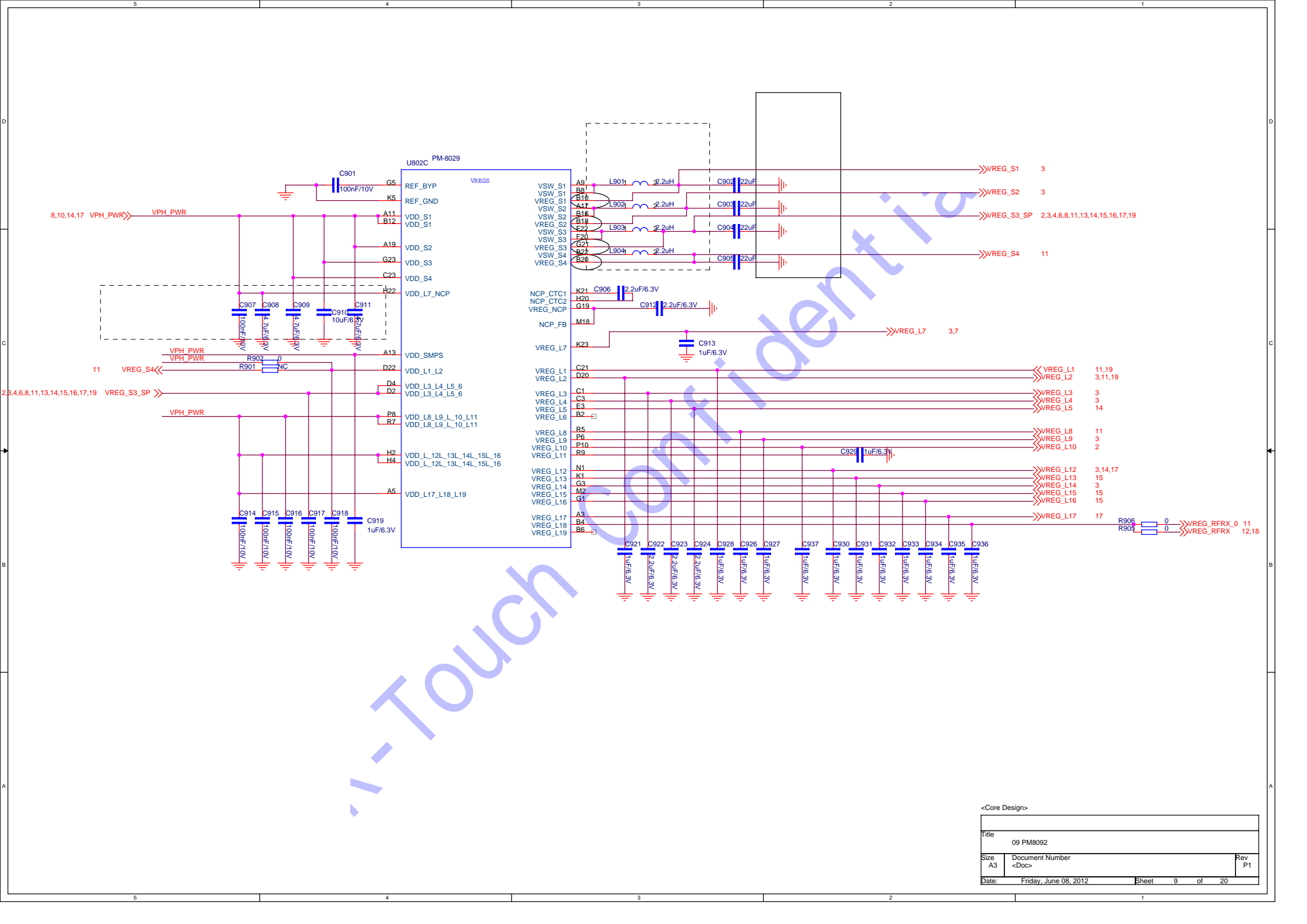
<Core Design>

Title		
7225A ANALOG / RF		
Size	Document Number	Rev
Custom	TBW5926	P1
Date:	Friday, June 08, 2012	Sheet 7 of 20



<Core Design>

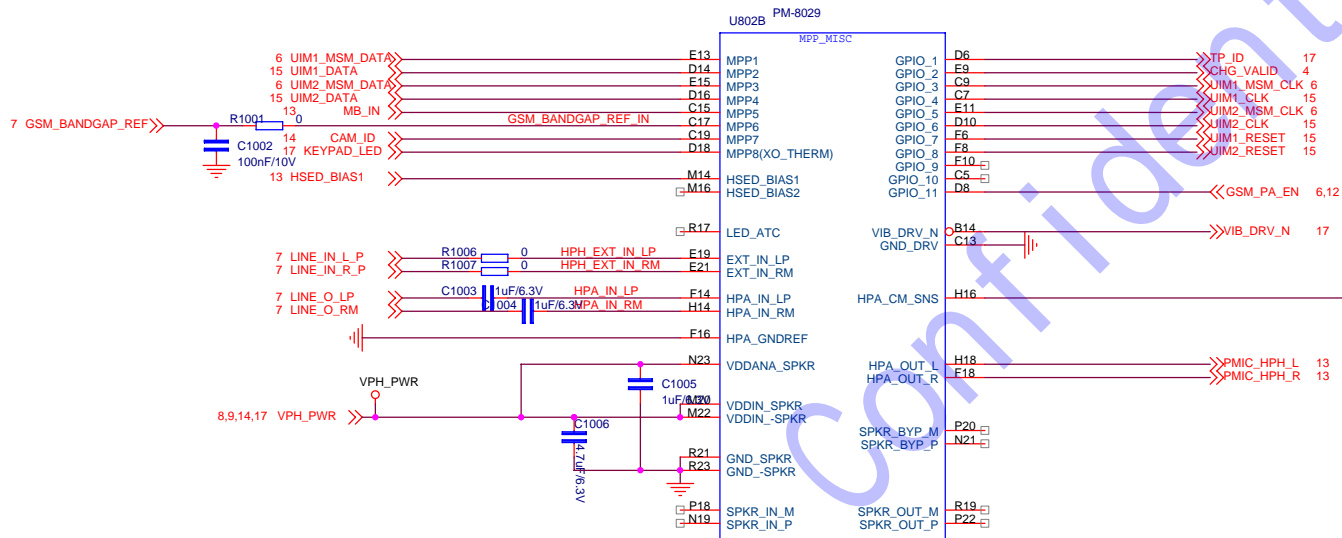
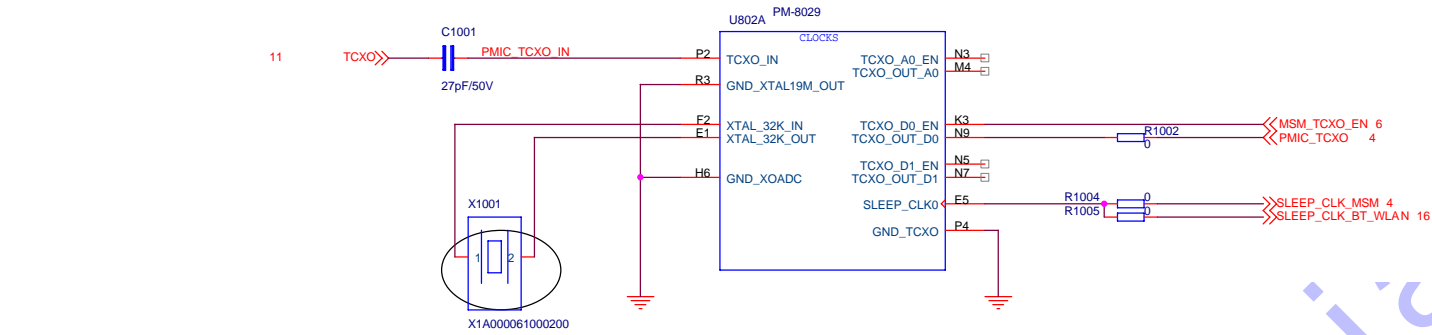
Title		
PM8029		
Size	Document Number	Rev
A4	<Doc>	P1
Date:	Friday, June 08, 2012	Sheet 8 of 20



Confidential

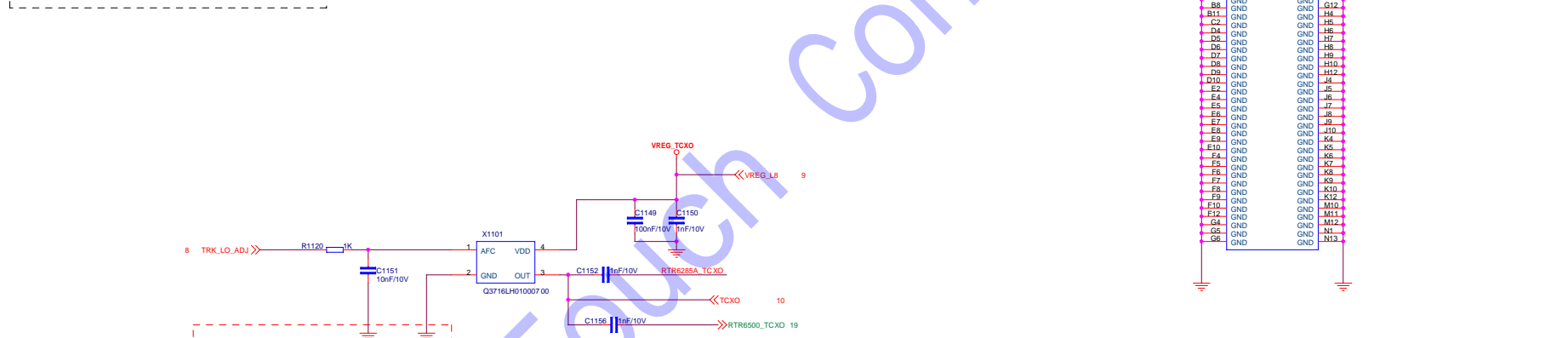
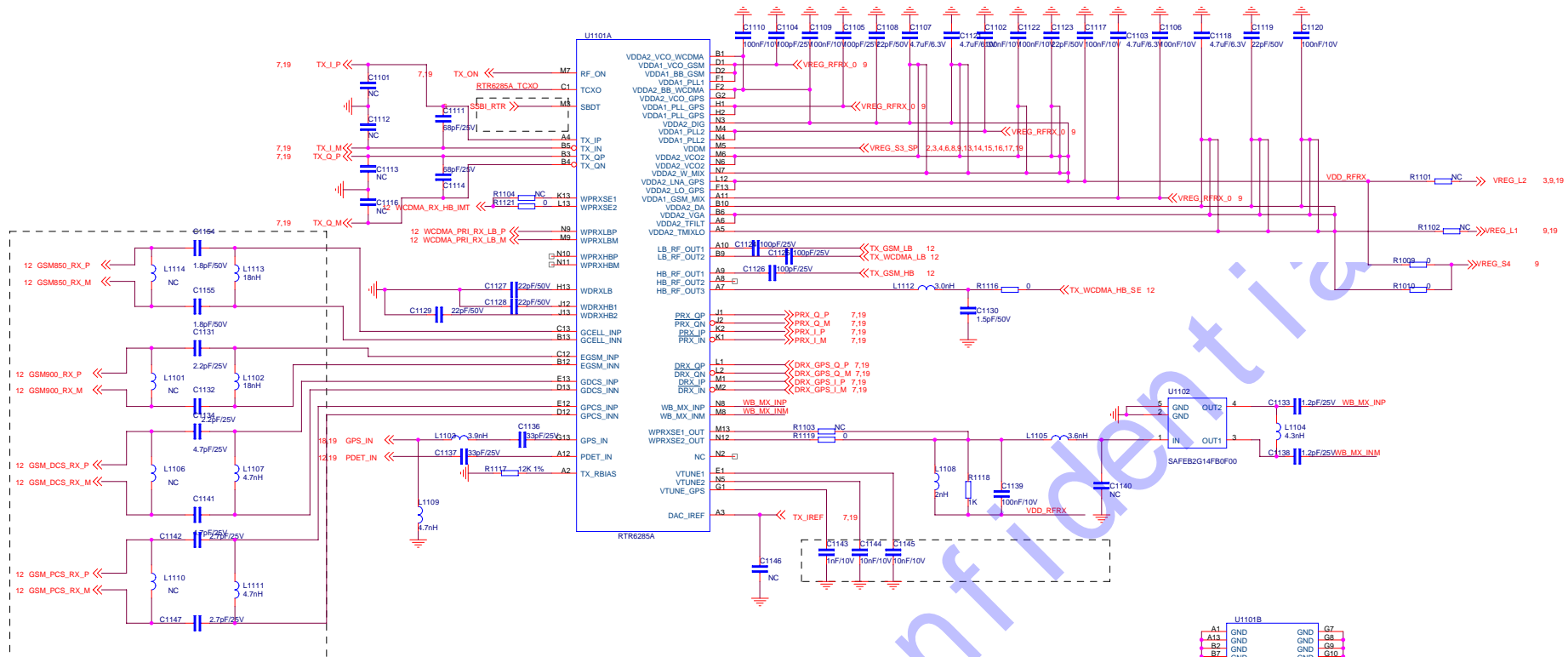
<Core Design>

Title		09 PM8092
Size	Document Number	Rev
A3	<Doc>	P1
Date:	Friday, June 08, 2012	Sheet 9 of 20



<Core Design>

Title		
10 PM8029		
Size	Document Number	Rev
A3	<Doc>	P1
Date:	Friday, June 08, 2012	Sheet 10 of 20



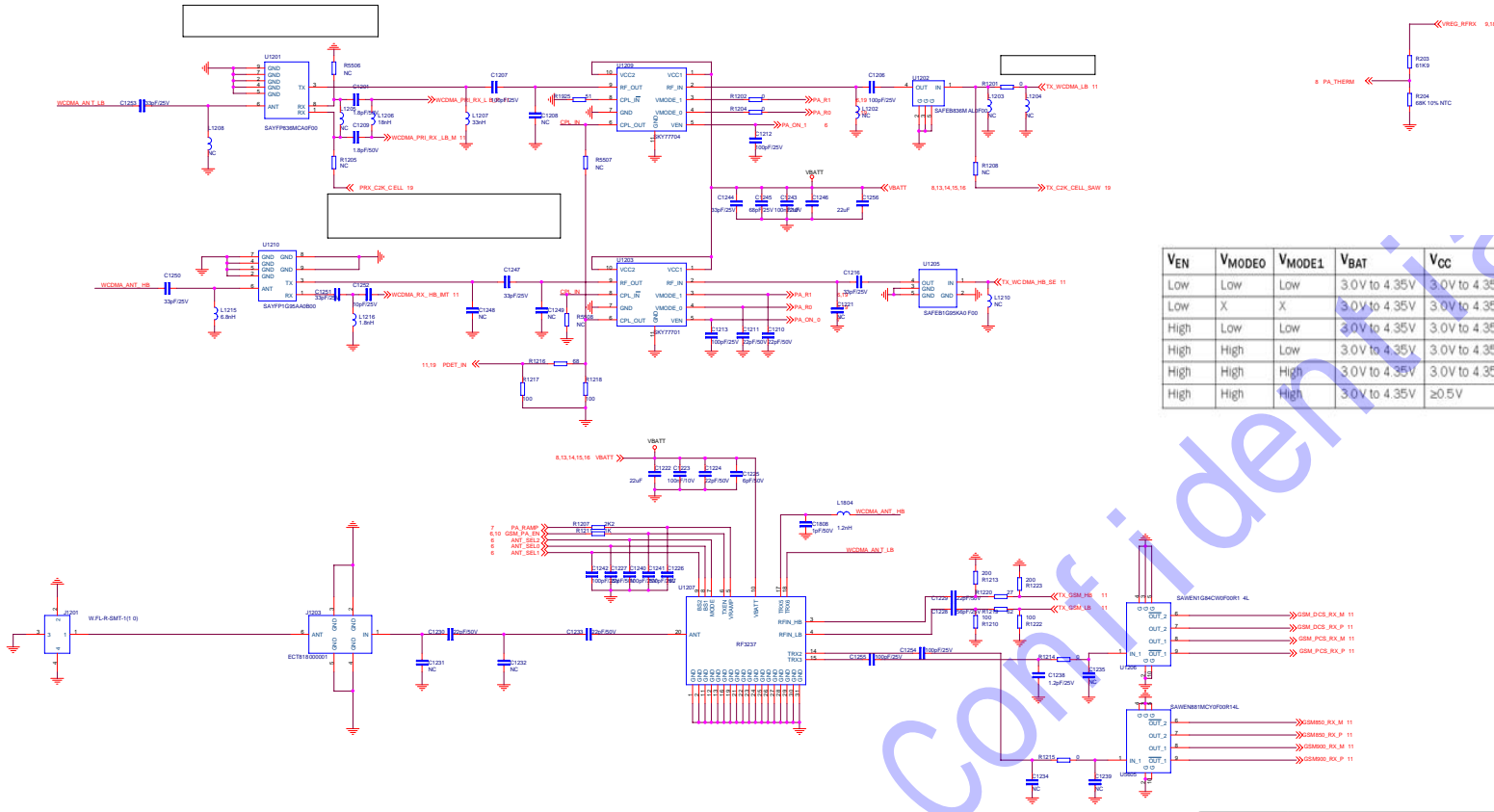
U1101B

A1	GND	G7	GND
A13	GND	G8	GND
B2	GND	G9	GND
B7	GND	G10	GND
B8	GND	G12	GND
B11	GND	H4	GND
C2	GND	H5	GND
D4	GND	H6	GND
D6	GND	H7	GND
D7	GND	H8	GND
D8	GND	H9	GND
D9	GND	H10	GND
D10	GND	H12	GND
E2	GND	J6	GND
E4	GND	J5	GND
E6	GND	J7	GND
E8	GND	J8	GND
E9	GND	J9	GND
E10	GND	J10	GND
F7	GND	K4	GND
F8	GND	K5	GND
F9	GND	K6	GND
F10	GND	K7	GND
F12	GND	K8	GND
G4	GND	K9	GND
G5	GND	K10	GND
G6	GND	K12	GND
	GND	M10	GND
	GND	M11	GND
	GND	M12	GND
	GND	N1	GND
	GND	N13	GND

RTR6285A

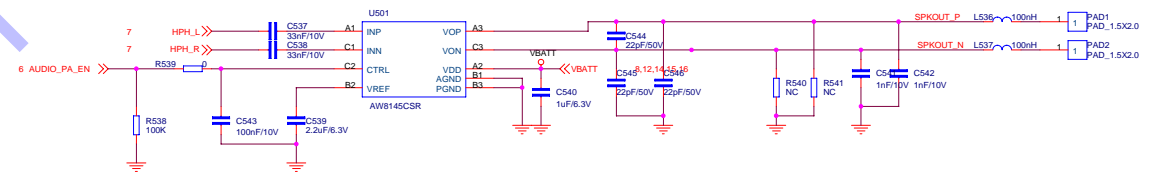
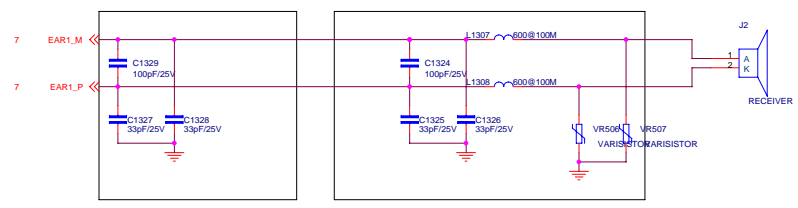
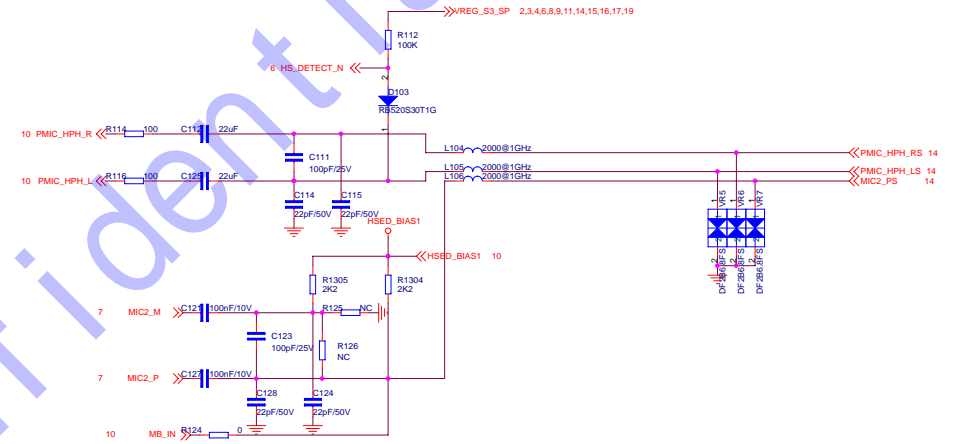
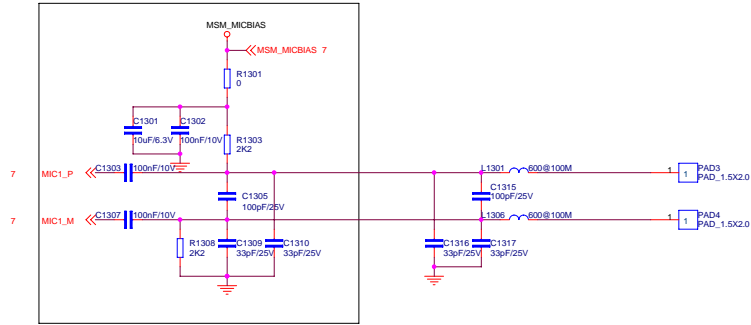
<Core Design>

Title	RTR6285A	Rev	P1
Size	Document Number		
Date	Friday, June 08, 2012	Sheet	11 of 20



VEN	VMODE0	VMODE1	VBAT	VCC	Conditions/Comments
Low	Low	Low	3.0V to 4.35V	3.0V to 4.35V	Power down mode
Low	X	X	3.0V to 4.35V	3.0V to 4.35V	Standby Mode
High	Low	Low	3.0V to 4.35V	3.0V to 4.35V	High power mode
High	High	Low	3.0V to 4.35V	3.0V to 4.35V	Medium power mode
High	High	High	3.0V to 4.35V	3.0V to 4.35V	Low power mode
High	High	High	3.0V to 4.35V	≥0.5V	Optional lower VCC in low power mode

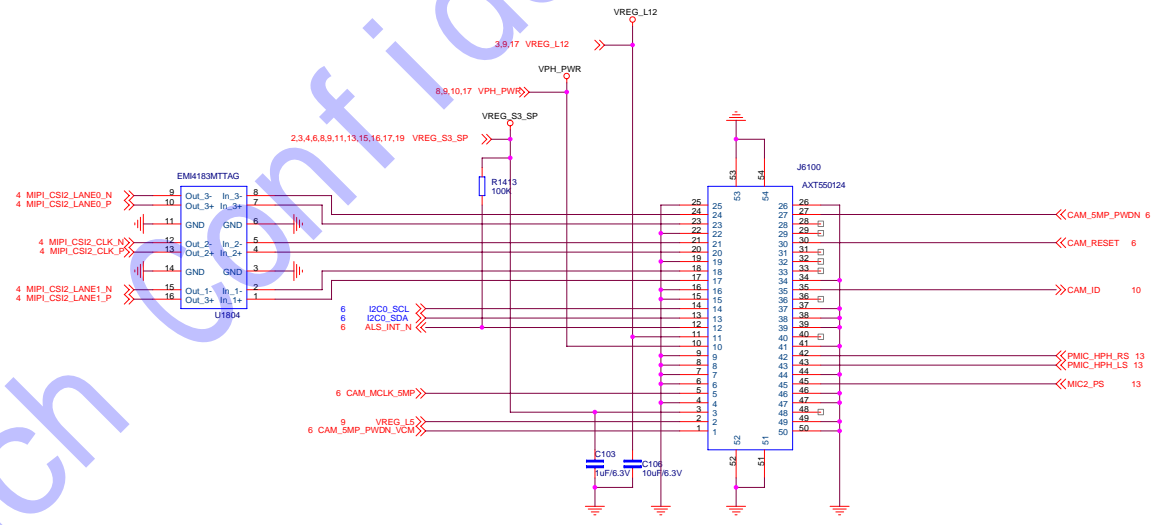
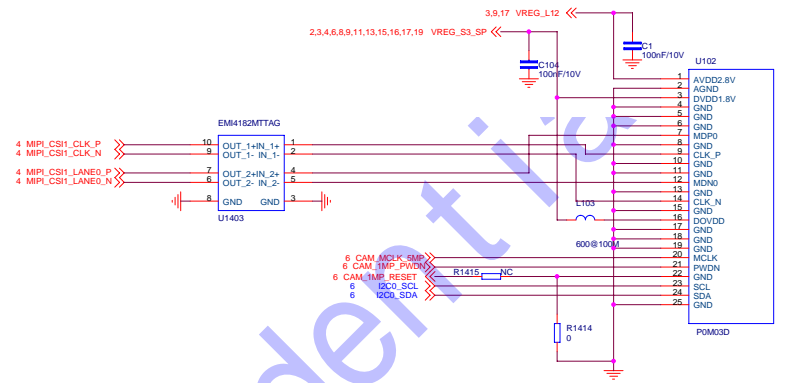
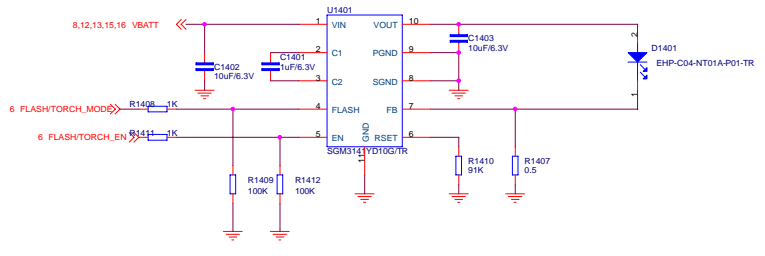
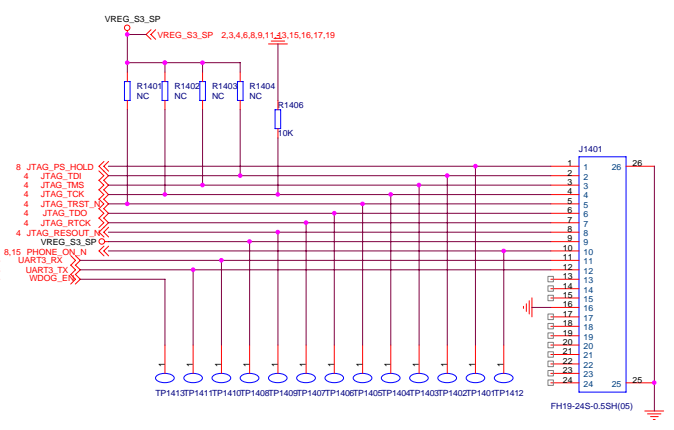
TX ENABLE	GpCtrl0(ANT_SEL2)	GpCtrl1(ANT_SEL1)	GpCtrl0(ANT_SEL0)	TX Module Mode
0	0	0	0	Standby
0	1	0	0	RX1 (GSM850 or GSM900)
0	0	1	0	RX2 (GSM1800 or GSM1900)
0	0	1	1	TRX1 (WCDMA Band1)
0	0	0	1	TRX2 (WCDMA Band5)
1	0	1	0	Low Band GMSK (TX_GSM_LB)
1	0	1	1	High Band GMSK (TX_GSM_HB)



Confidential

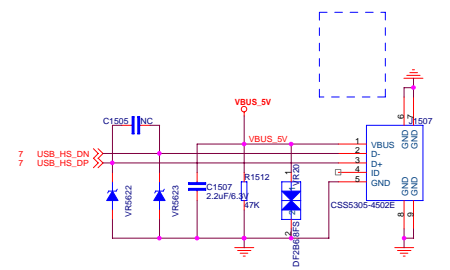
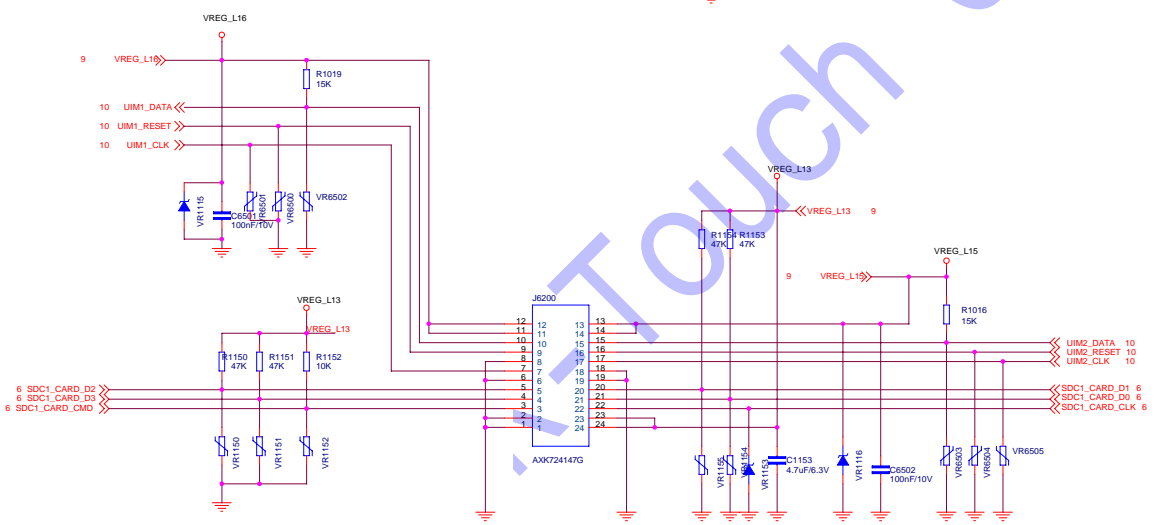
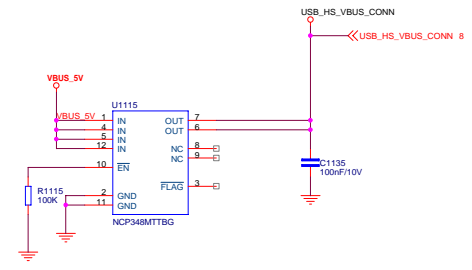
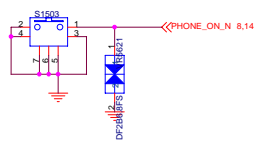
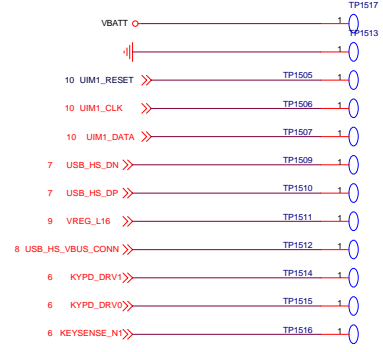
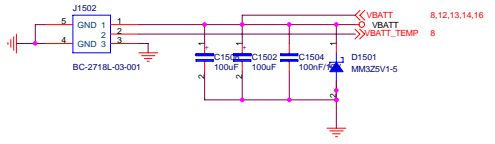
<-Core Design>

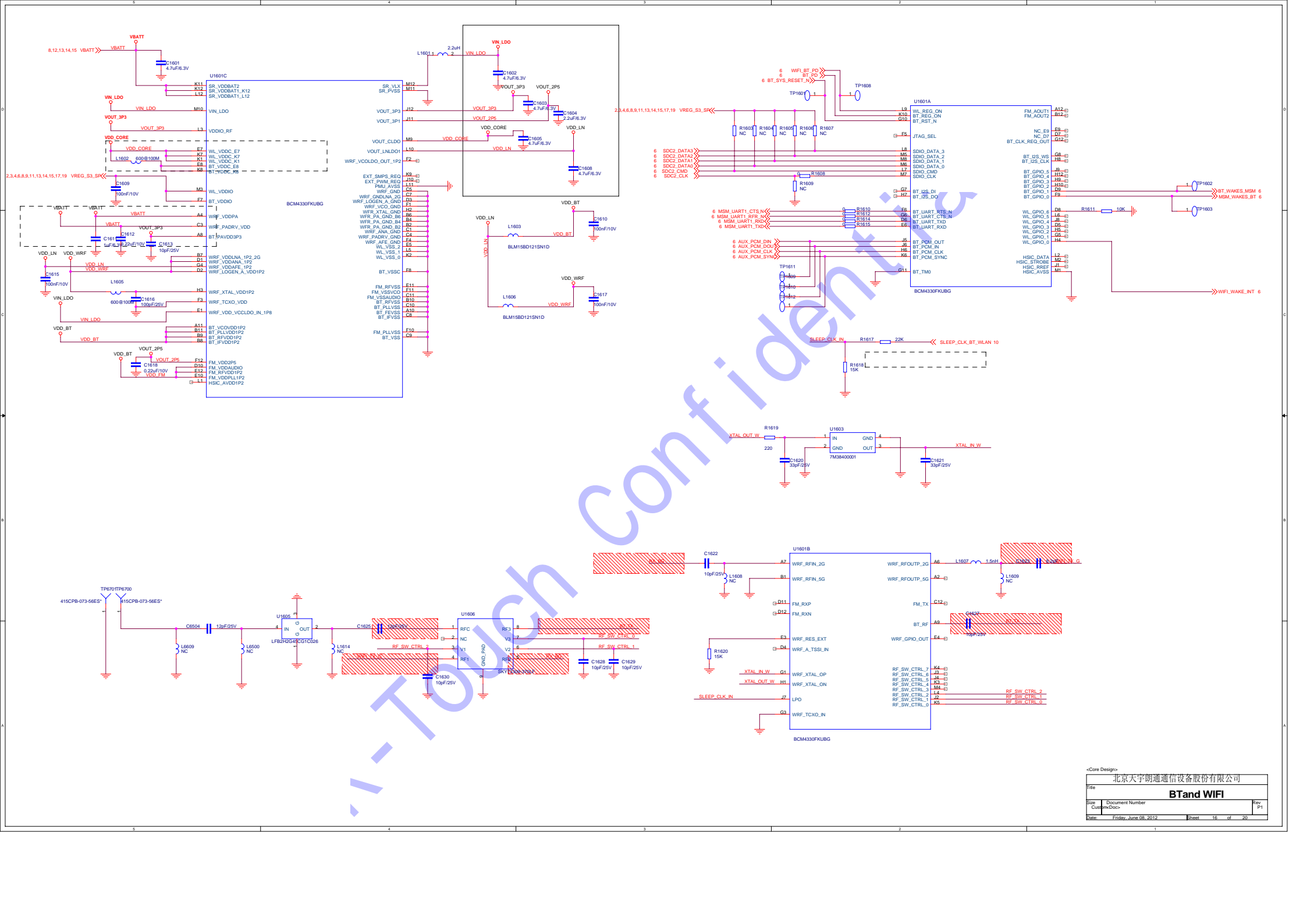
北京天宇朗通通信设备股份有限公司		
Title		
Audio		
Size	Document Number	Rev
A2	<Doc>	P1
Date	Friday, June 08, 2012	Sheet 13 of 20

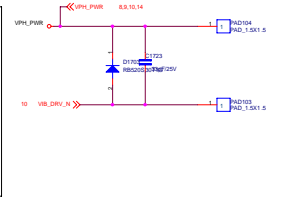
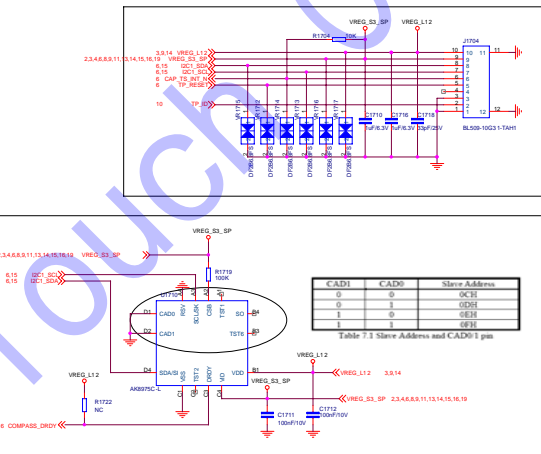
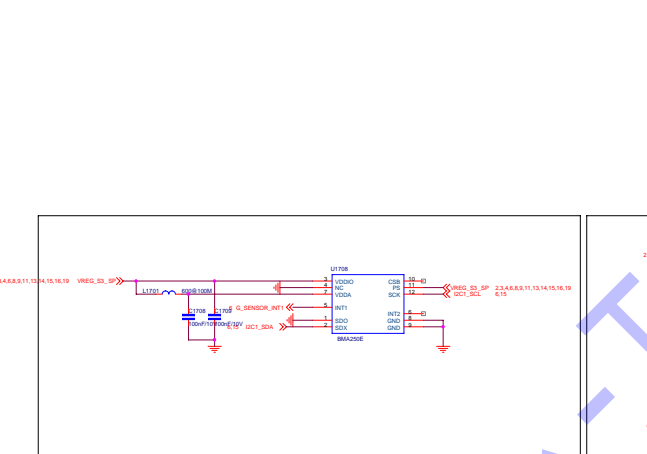
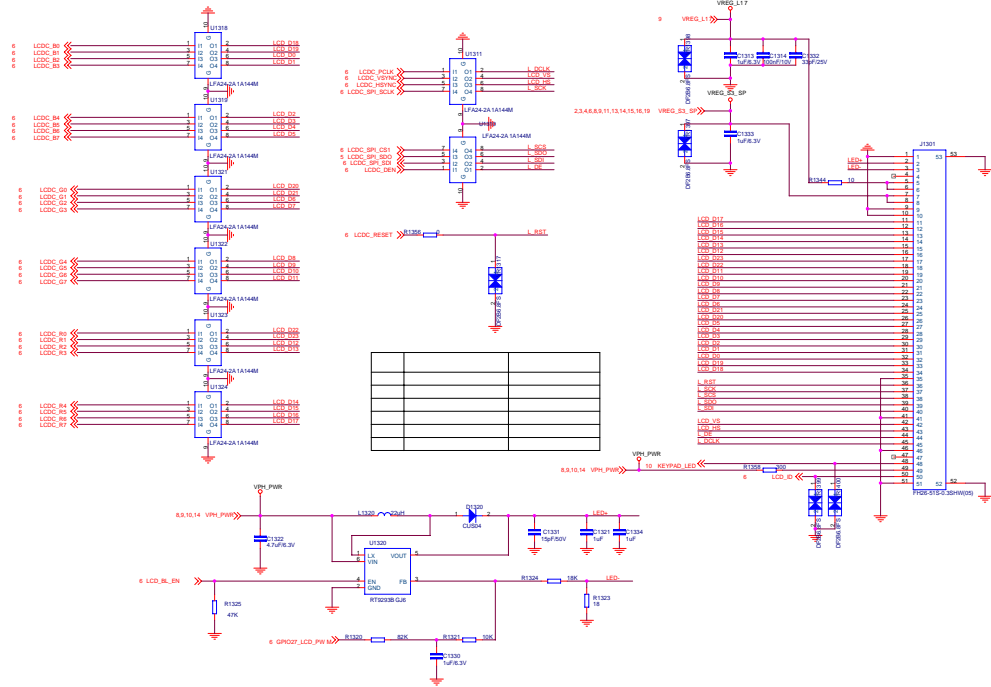


«Core Design»

北京天宇朗通通信设备股份有限公司			
Camera			
Size	A2	Document Number	«Doc»
Date:	Friday, June 08, 2012	Sheet	14 of 20
		Rev	P1

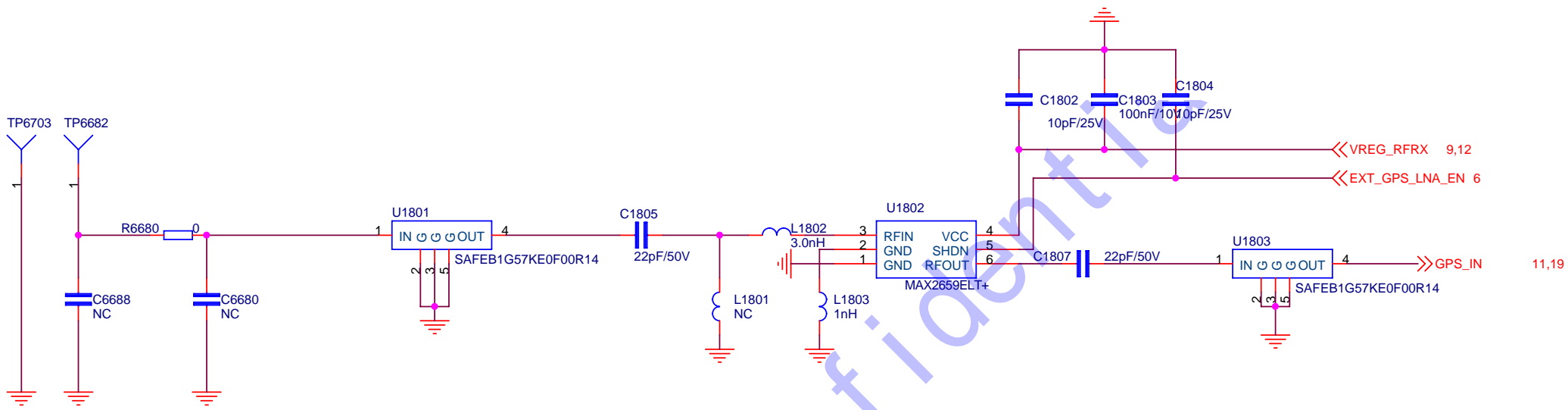






CAD1	CAD0	Slave Address
0	0	0C3E
0	1	0D3E
1	0	0E3E
1	1	0F3E

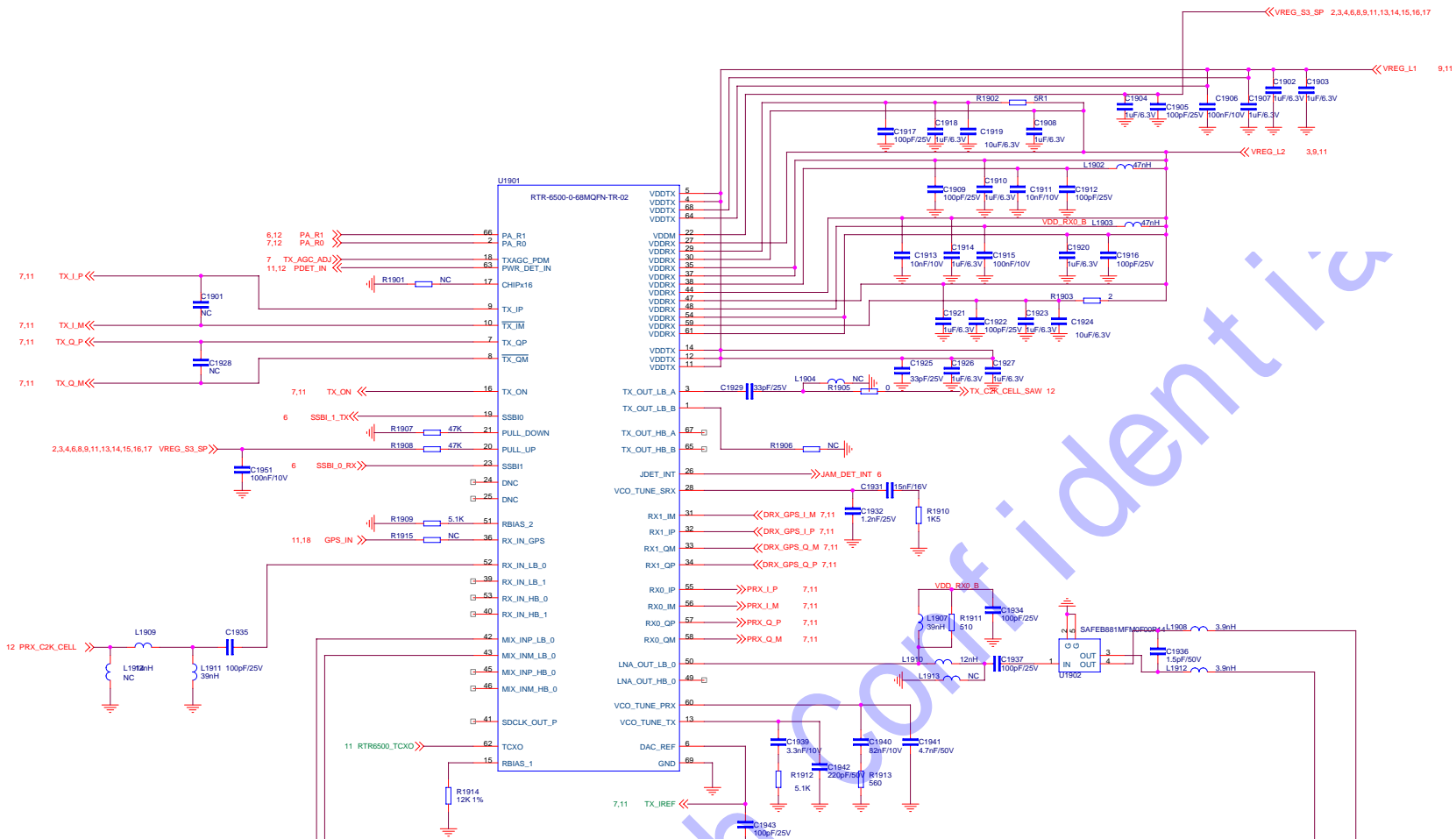
Table 7-1 Slave Address and CAD0-1 pin



Confidential

<Core Design>

Title		
GPS		
Size	Document Number	Rev
A4	<Doc>	P1
Date: Friday, June 08, 2012		Sheet 18 of 20



<Core Design>

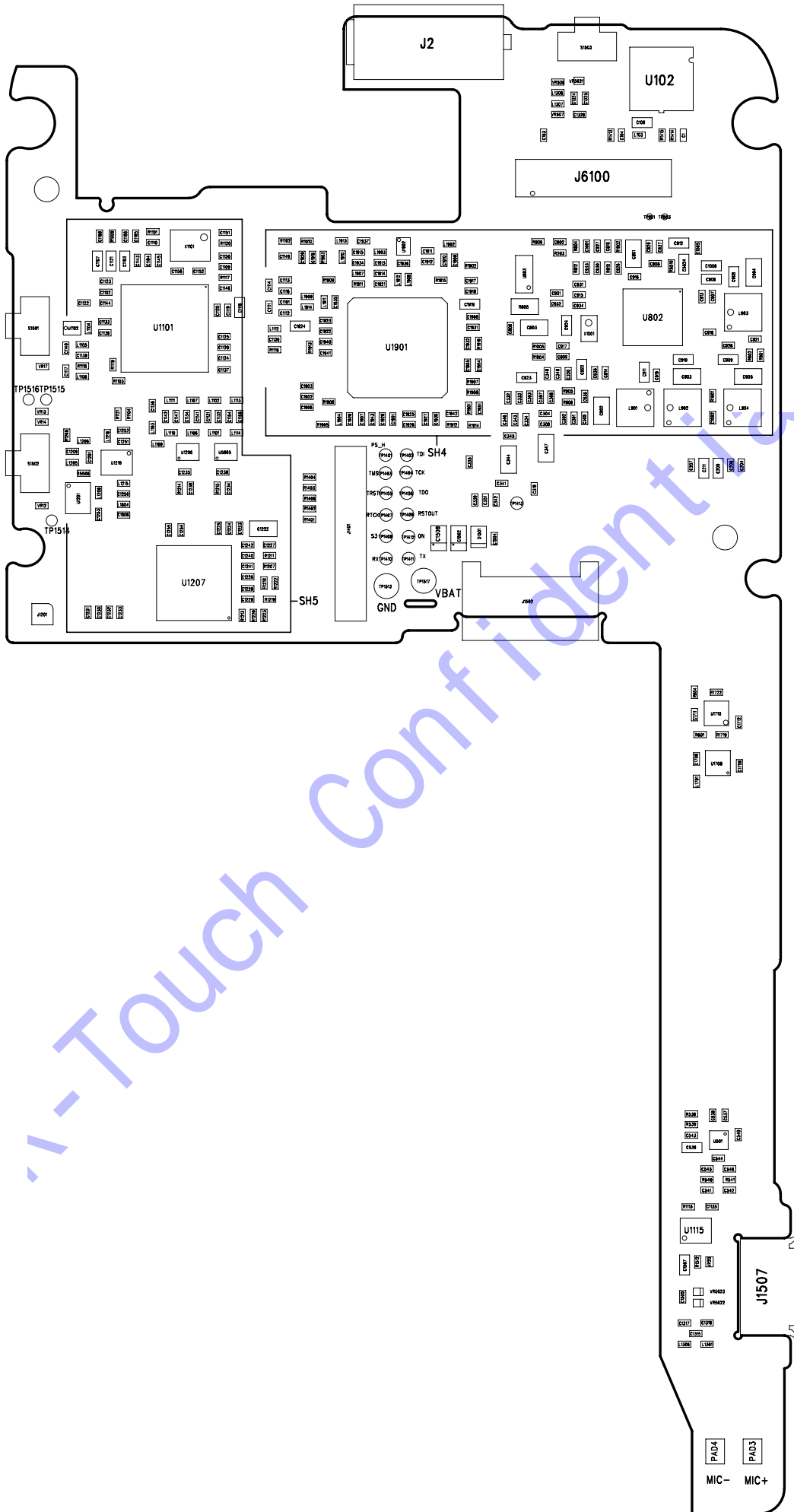
File		<Title>
Size	A4	Document Number
Date	Friday, June 08, 2012	Sheet 19 of 20

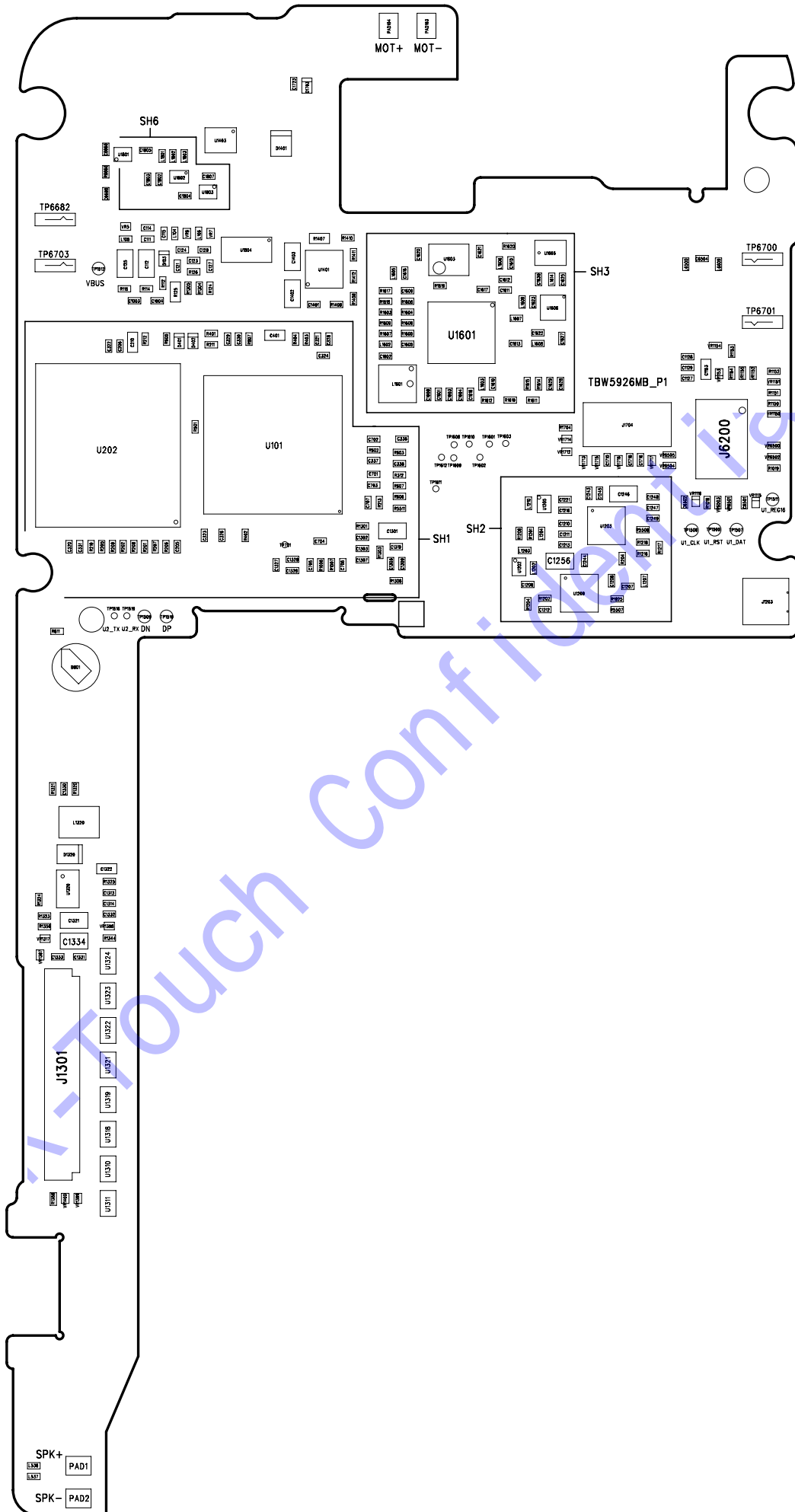
Rev <RevCode>

Touch Confidential

<Core Design>

Title <Title>		
Size A	Document Number <Doc>	Rev <RevCode>
Date:	Friday, June 08, 2012	Sheet 20 of 20





Touch Confidential