

主机外观图

机型名: T586

上市时间: 2013 年 2 月



产品定义书

主要卖点 (建议TOP3)\Selling point	3.5寸HVGA屏, 1GHz主频, 支持GSM/GPRS/EDGE/TD-SCDMA/HSDPA/HSUPA, 支持WiFi, BT, FM, 支持双卡双待		
产品概述\Product overview			
整机外形\Outline	直板	通信制式\Communication system	TD+GSM双模双待
硬件平台\Hardware platform	SC8810 + SR3500 + BCM4330		
硬件规格\Hardware specifications			
类 型	项 目	描 述	
显示屏\DISPLAY	尺寸(英寸)\Size	3.5寸	
	分辨率\Resolution	320*480 (HVGA)	
	材质\Screen Material	TFT	
	色彩数\Color quantity	262K色	
	连接方式\Connection mode	ZIF	
	触摸\Touch	电容触摸	
	多点触摸\Multi point touch	单点	
	控制IC\Control IC	MSG2133	
	触摸实现形式\Touch the realization forms	单点+手势	
后摄像头\After camera	像素\Pixel	300万	
	变焦类型\Zoom type	定焦FF	
	连接方式\Connection mode	socket	
	Sensor型号\Sensor model	OV3660	
电池\Battery	电池容量\Battery capacity	1200mAh	
	接触方式\Connection mode	金手指	
	电池类型\Battery type	锂离子	
声 音\Audio	耳机立体声\Stereo earphone	支持	
	免提\Handfree	支持	
	喇叭\Speaker	支持	
	喇叭尺寸规格\Speaker size specification	单喇叭	
存 储\Storage	T卡卡槽\Card slot	支持	
	T卡最大容量\Card capacity	32GB	
	ROM\ROM	512MB	
	RAM\RAM	256MB	
	主键盘板类型\Keyboard type	与主板集成	

按 键\Key	触感按键\Tactile keys	支持
	按键LED数量\The LED key quantity	1
	按键LED颜色\The LED key color	白色
FM\FM	FM天线\FM antenna	支持FM（耳机当天线）
	FM外放\FM play	不支持
无线通信\Wireless communication	蓝牙\Bluetooth	支持蓝牙2.1
	NFC\NFC	不支持
	GPS\GPS	不支持
	WiFi\WIFI	支持802.11g/b/n
灯 光\Lamp light	闪光灯\Flash lamp	无
	手电筒\Flashligh	不支持
	七彩灯\Colorful lights	无
	紫外验钞灯\Bill detector	无
TV	模拟电视\Analog TV	不支持
	数字电视\Digital TV	不支持
	TV-OUT\TV-OUT	不支持
传感器\Sensor	环境光传感器\light sensor	支持
	接近传感器\Proximity sensor	支持
	重力传感器\Gravity sensor	支持
	加速度传感器\Acceleration sensor	支持
	E-compass\E-compass	不支持
	陀螺仪\Gyroscope	不支持
接 口\Interface	耳机接口\Earphone interface	3.5mm耳机
	充电接口\Charging interface	Micro-USB
	USB接口\USB interface	Micro-USB
	HDMI&MHL接口\HDMI&MHL	不支持

拆装机注意事项

T586（9601A1 主板）与 W650（5913 主板）结构相同，可参考《W650 拆装机指导》

一、拆卸注意事项：

- 1.拆卸 FPC 组件时避免由于暴力拆卸造成主板或 FPC 组件破损。
- 2.焊接元件较多，焊接时注意避免损伤该组件。
- 3.主板上防静电胶带较多，安装时保证原位置焊盘不能裸露，以免造成静电损伤。
- 4.具有极性的元件在组装时要注意方向，不要装反。

二、所需工具：

拨片、撬棍、塑料镊子、金属镊子、螺丝刀、手术刀



电烙铁



二、步骤:



1.) 从右侧下方缺口处打开电池盖



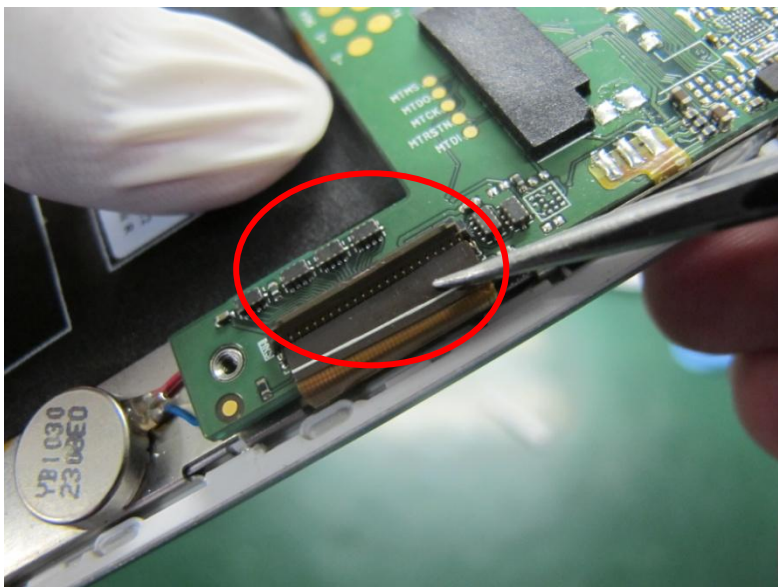
2.) 拧下 7 颗螺钉



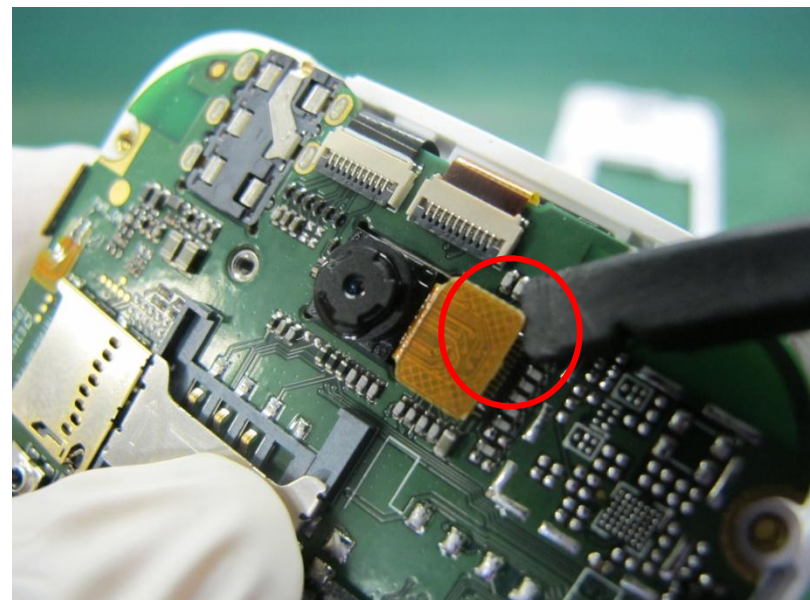
3.) 从机身侧面借助拨片由上向下滑动拆开机壳



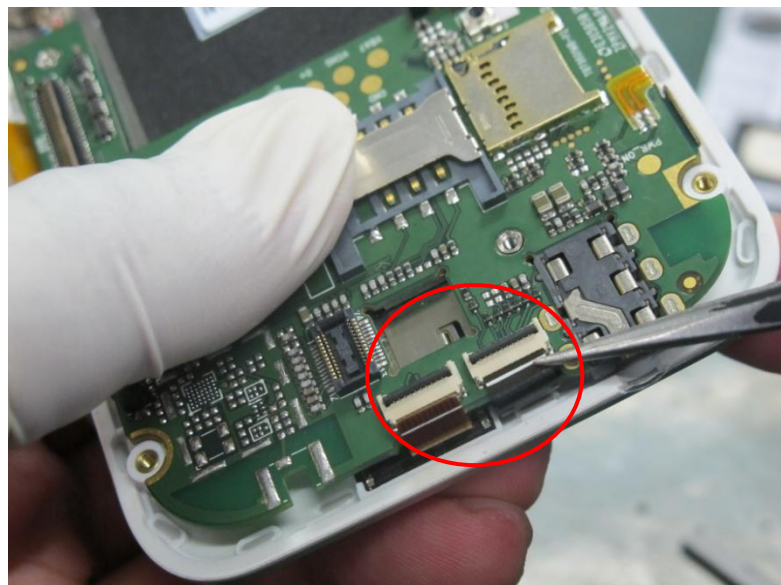
4.) 拆开机壳效果图



5.) 打开压片取下显示屏 FPC



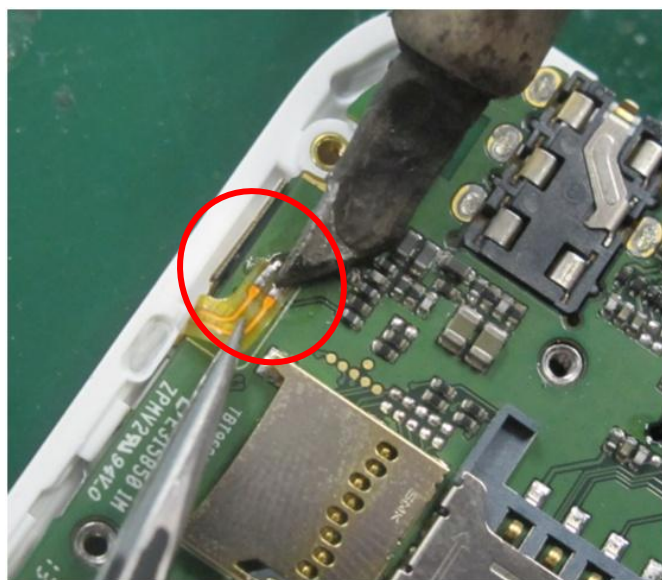
6.) 取下摄像头



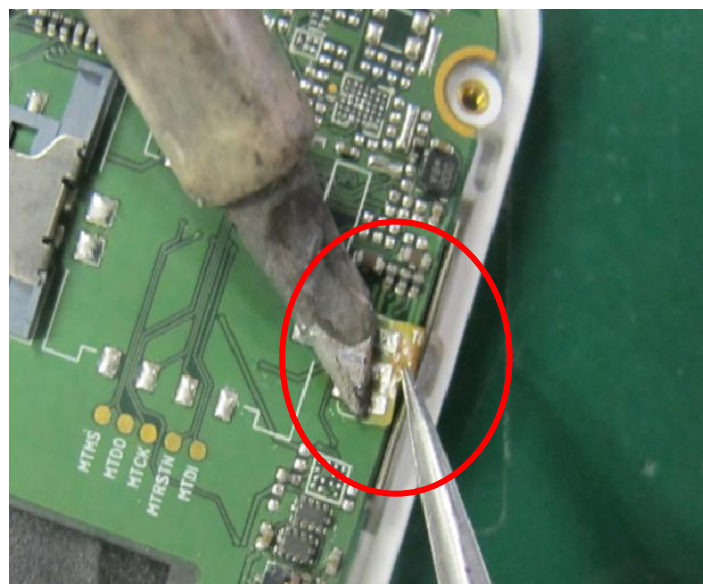
6.) 打开压片，取下触屏 FPC 和光感 FPC 。



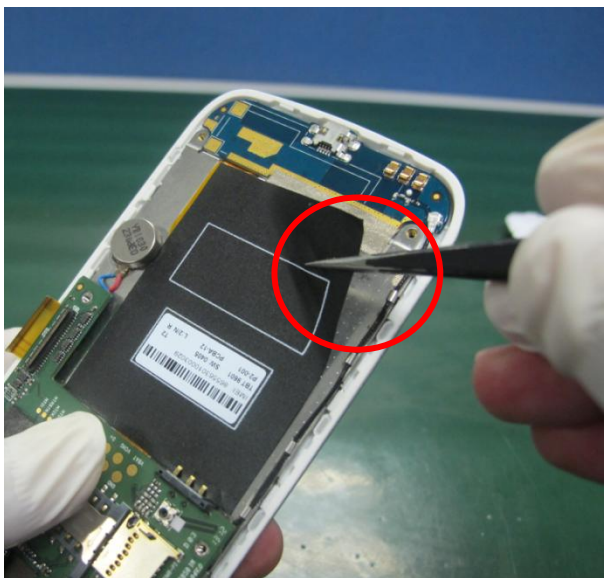
8.) 借助手术刀使振动器与主板分离



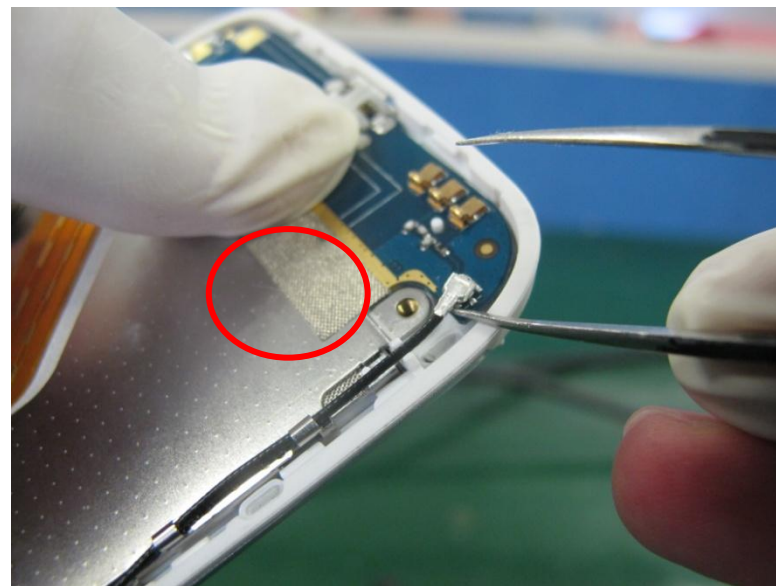
9.) 焊下开机键



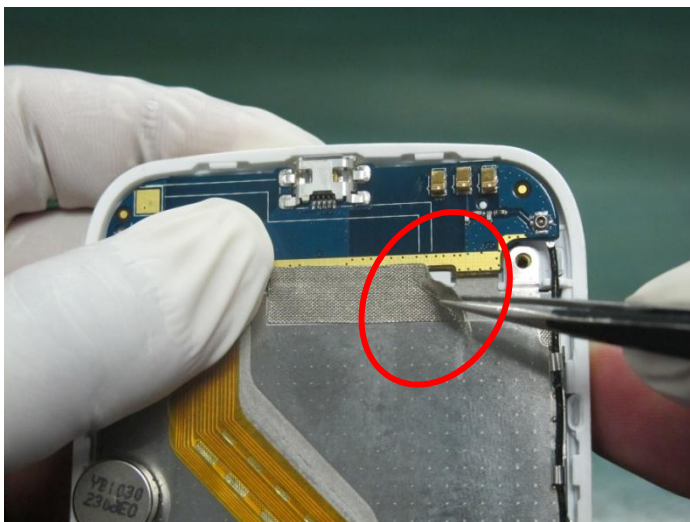
10.) 焊下音量键。



11.) 取下电池仓背贴.



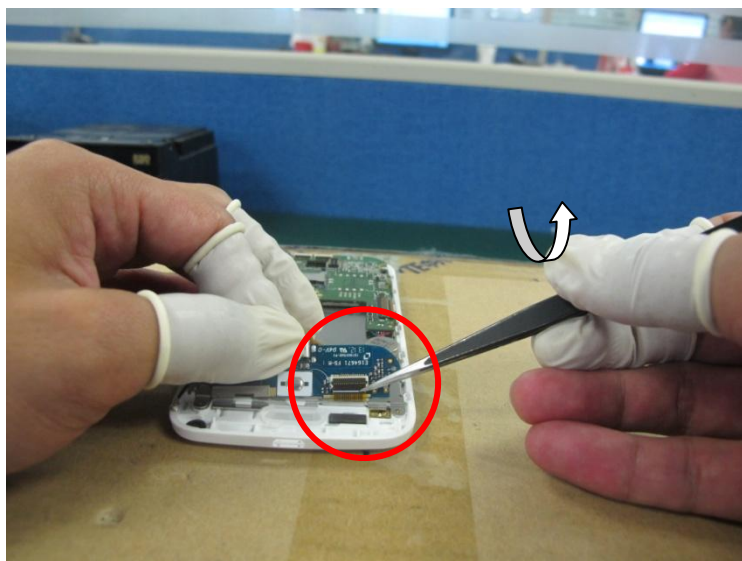
12.) 拆下天线连接线.



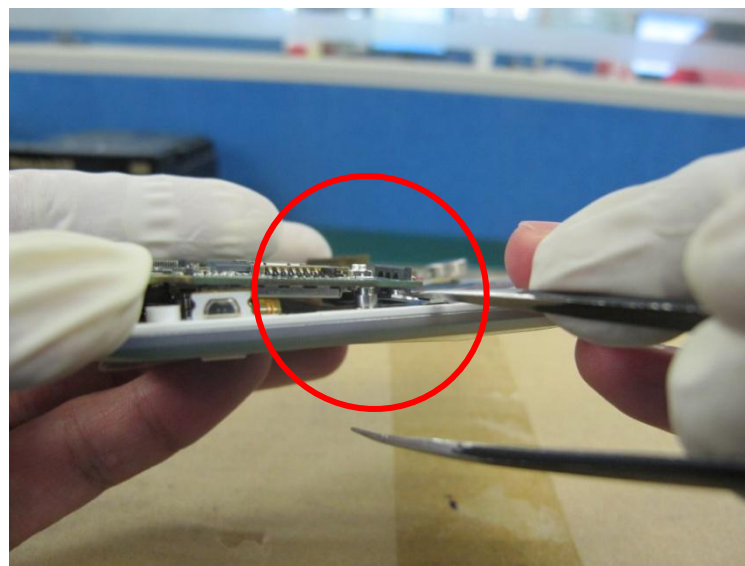
13.) 取下导电布.



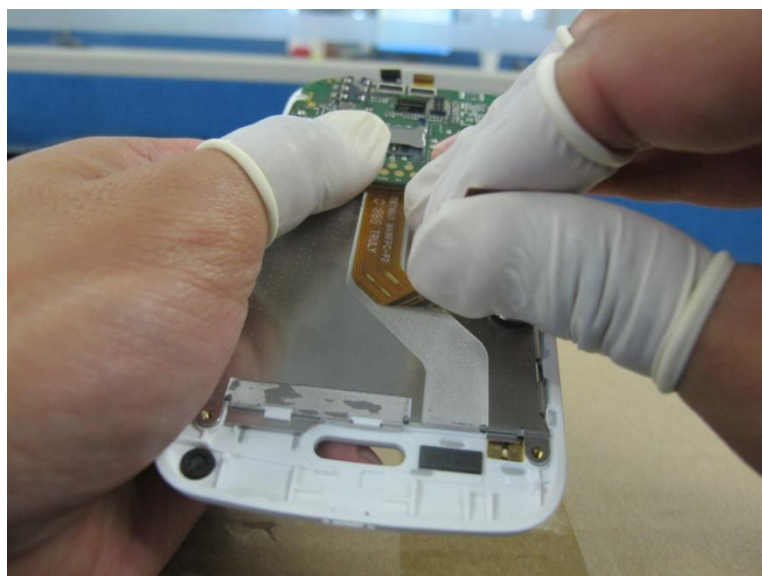
14.) 撬起小板.



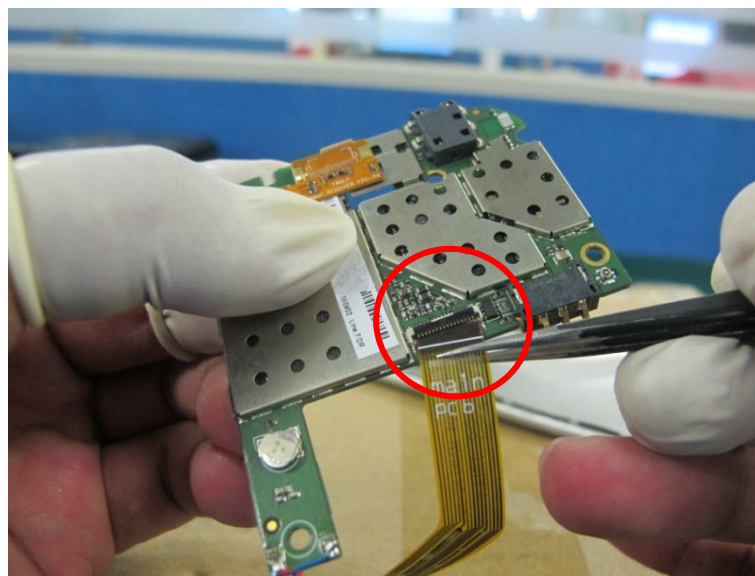
15.) 拆下小板 FPC



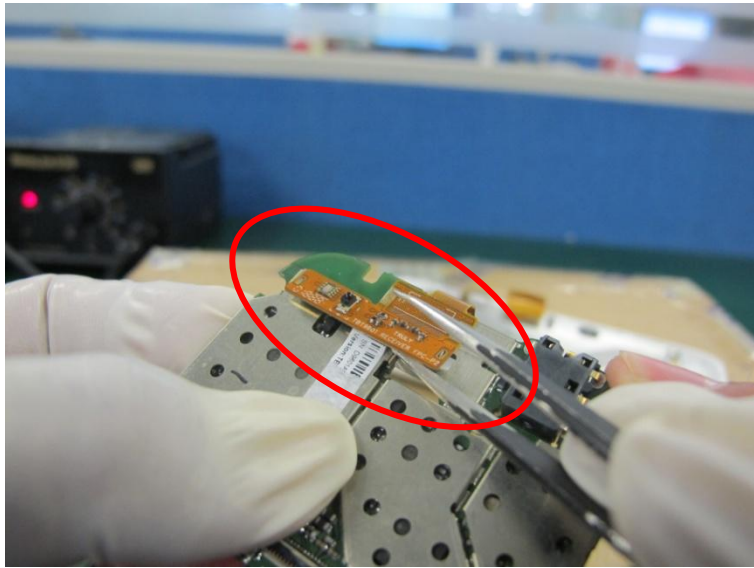
16.) 拆下另一端天线连接线. 注意主板不要撬起太高.



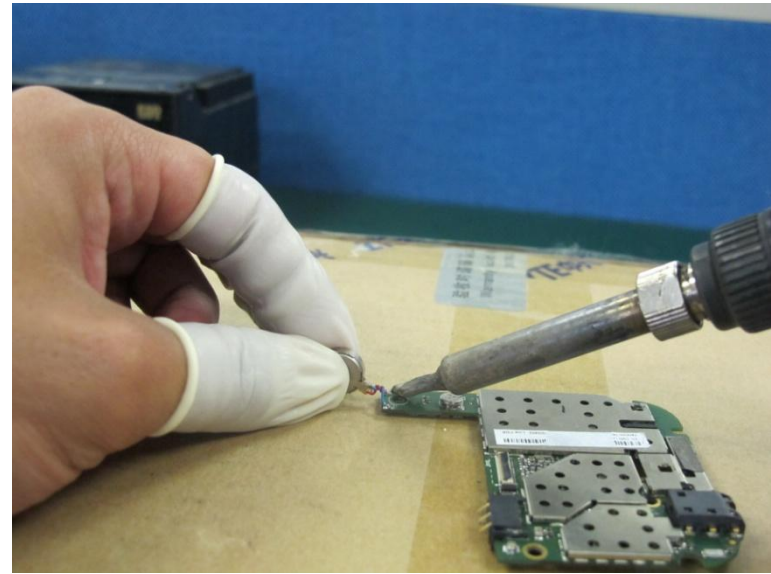
17.) 慢慢分离排线注意拆之前要稍微烤一下用力要均匀。



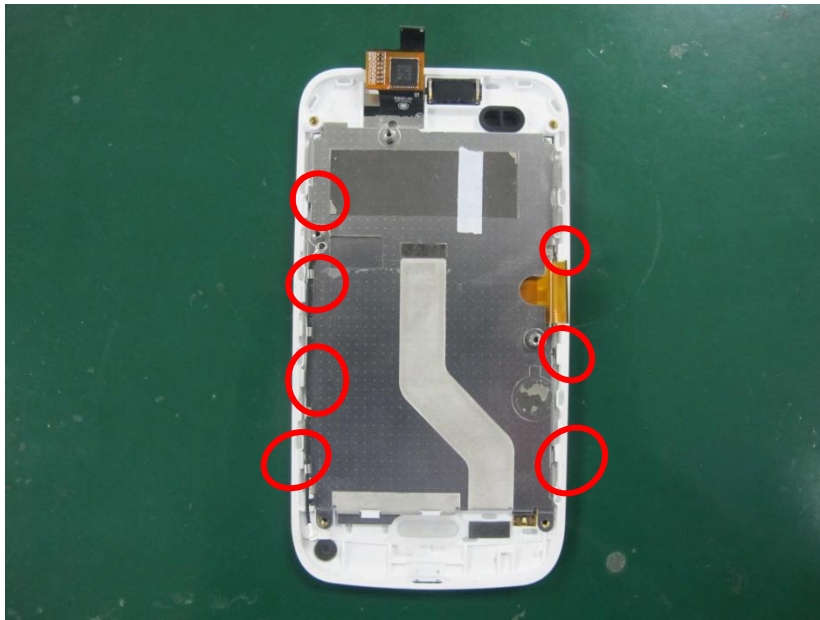
18.) 取下主板与排线.



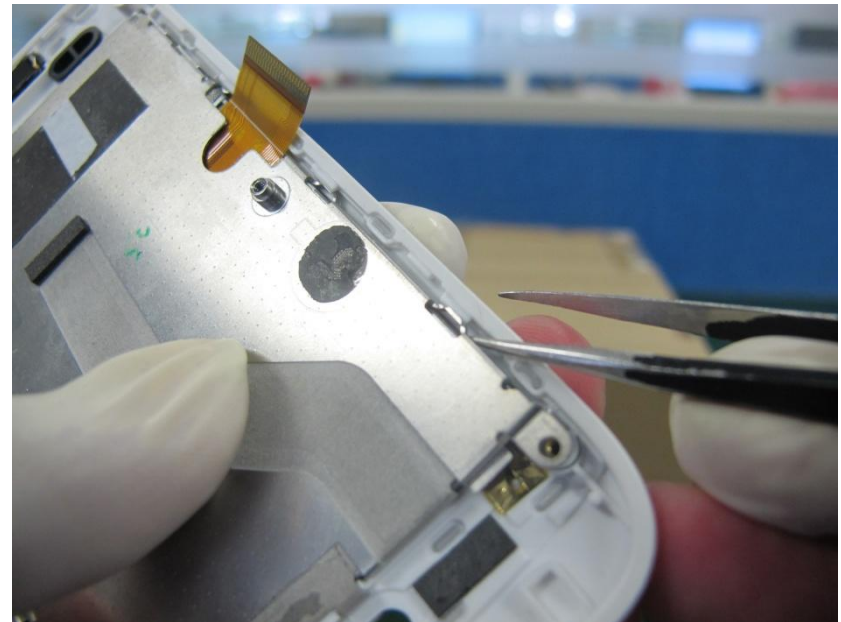
19.) 取下光感排线组件



20.) 焊下振动器



21.) 将7个卡扣逐个撬开



22.) 注意力度要适中,力度向外拨壳的边缘.



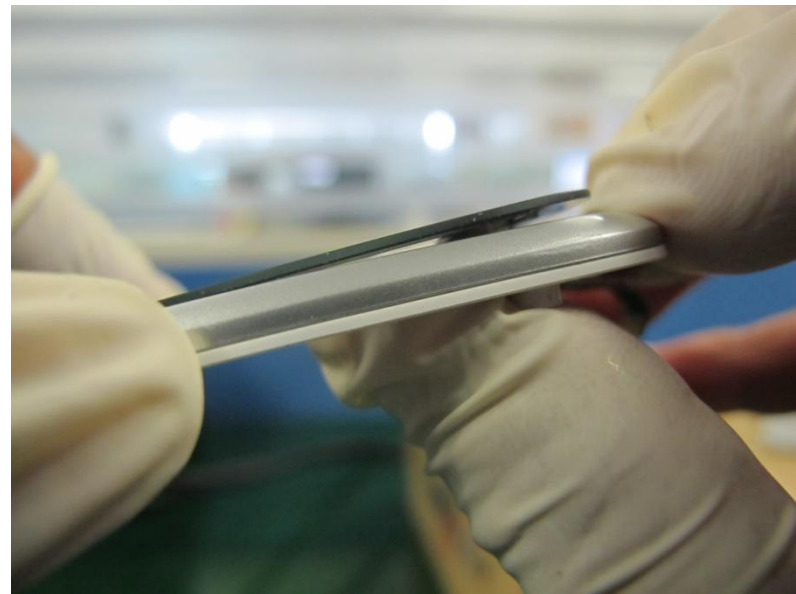
23.) 注意 HOM 键处的卡扣



24.) 取下显示屏



25.) 热风枪调至 80 度持续加热触屏四周三分钟.

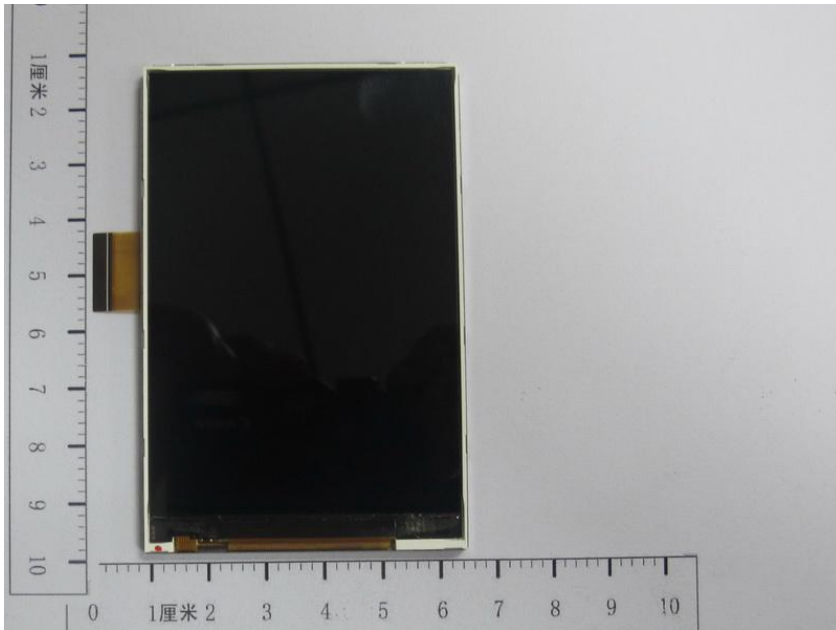


26.) 如图所示慢慢顶起触屏，切勿暴力拆卸，以防屏碎。



26.) 全家福

特殊物料识别



名称：显示屏

喷码：TM035PDH06（天马屏）

料号：TYC34700009161M



名称：触摸屏

描述：3.5 寸电容式触摸屏

料号：TYC9601A0800T



名称：前壳组件

料号：TYC9601A010109



名称：后壳组件

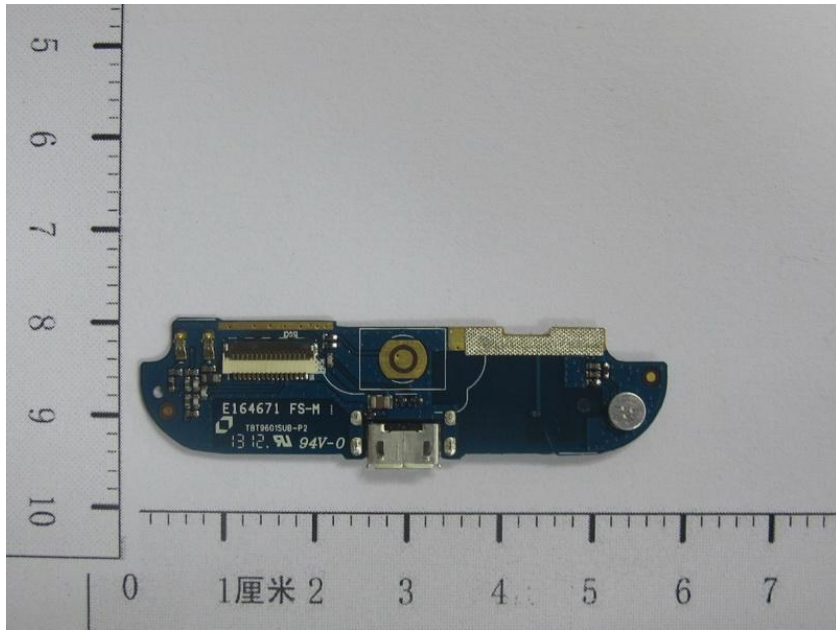
描述：后壳组件包括主天线 FPC

料号：TYC9601A020009



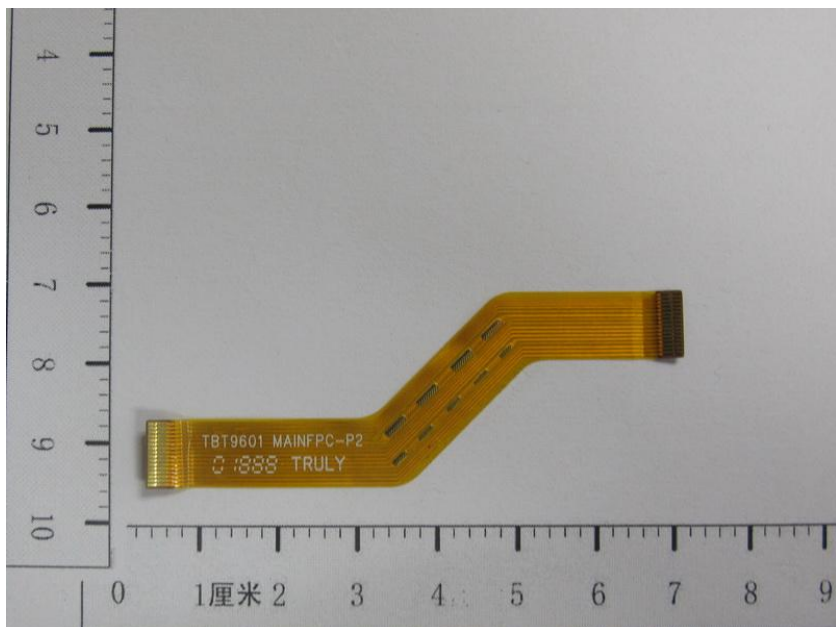
名称：电池盖

料号：TYC9601A050009



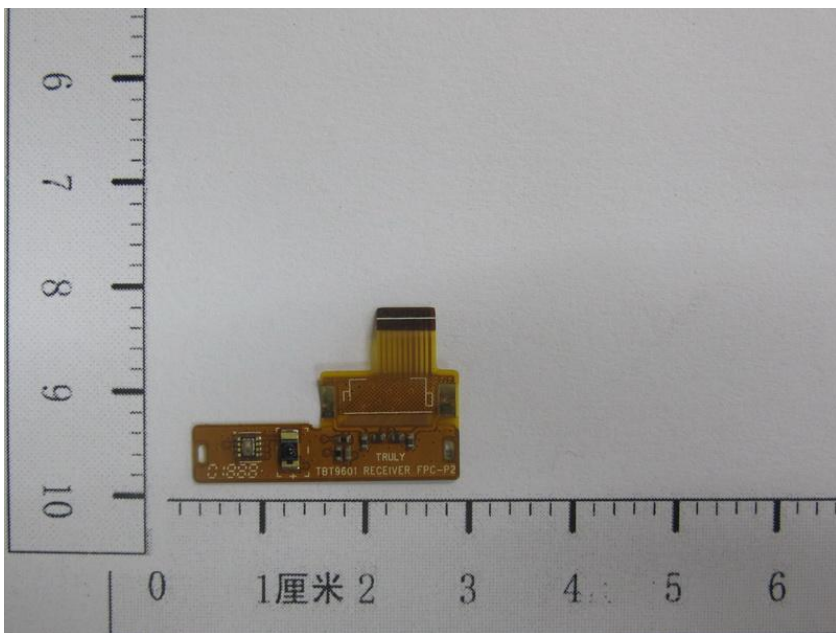
名称：副板

料号：TYC960180410111



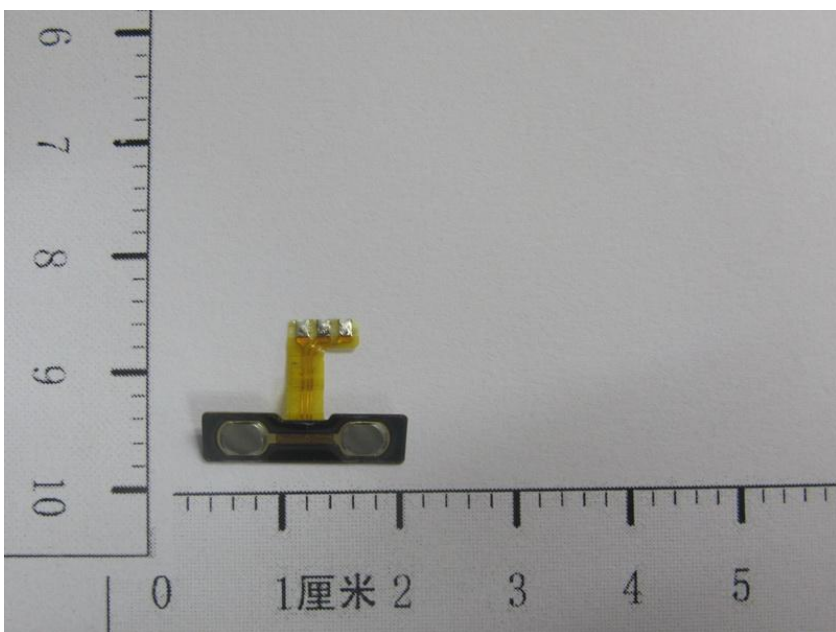
名称：主 FPC

料号：TY0220092T



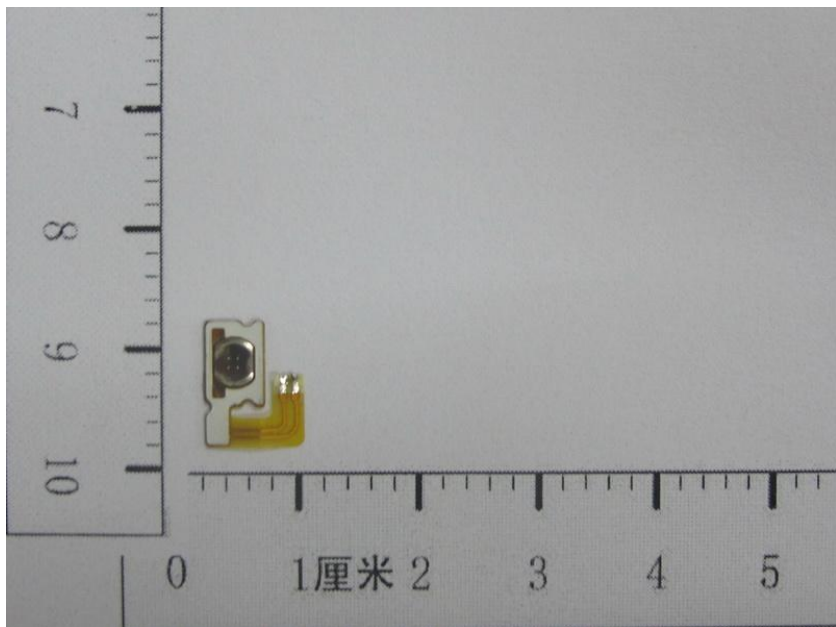
名称：听筒 FPC

料号：TYC960180420510



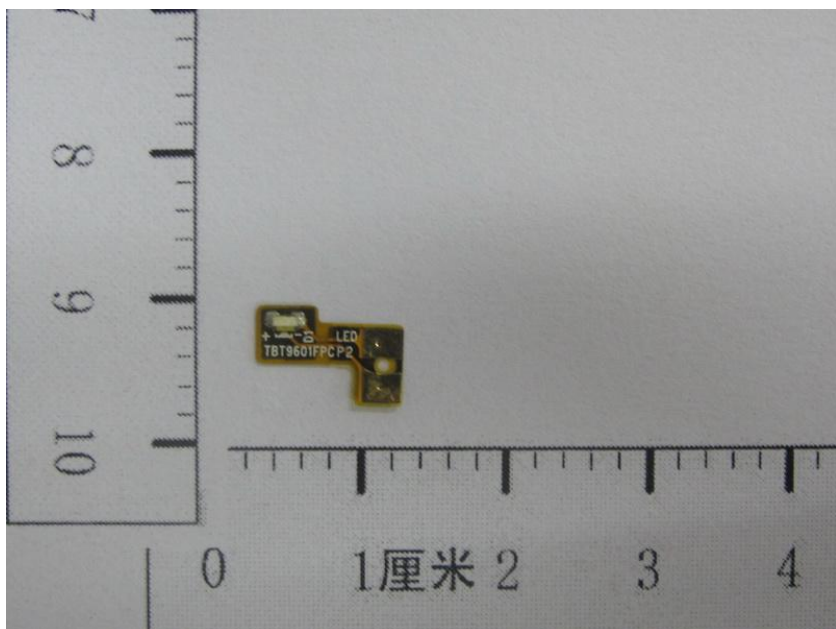
名称：音量键 FPC 组件

料号：TY0220089T



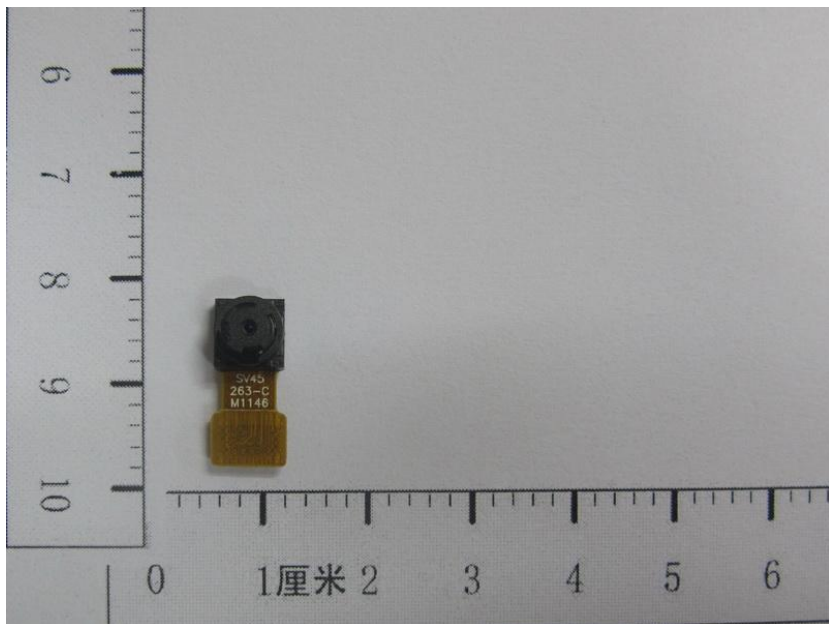
名称：开机键 FPC 组件

料号：TY0220093T



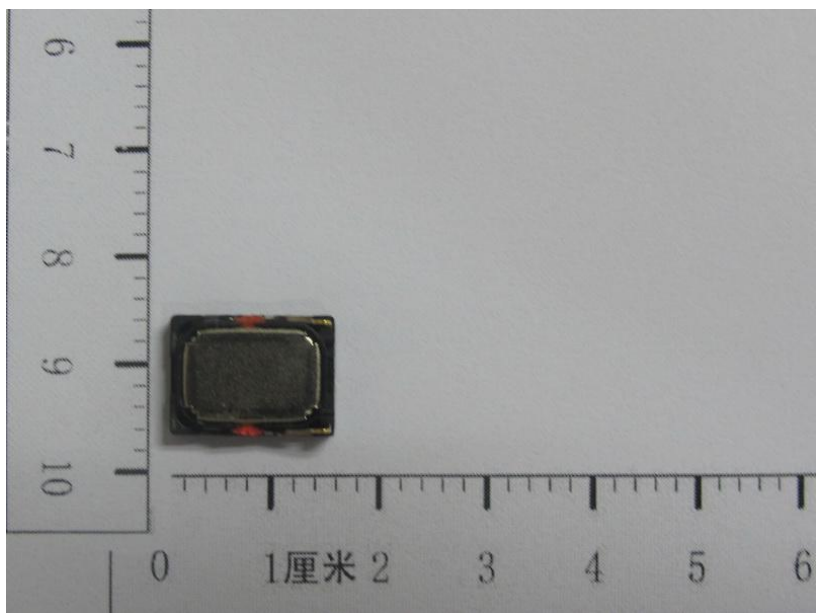
名称：电容屏按键灯 FPC 组件

料号：TYC960180420511



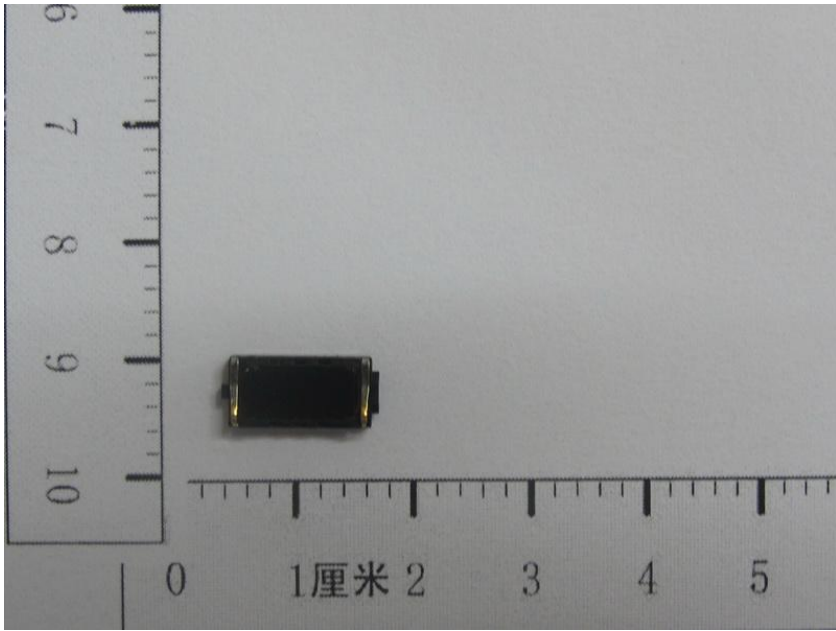
名称：摄像头

料号：TYC300BF118099



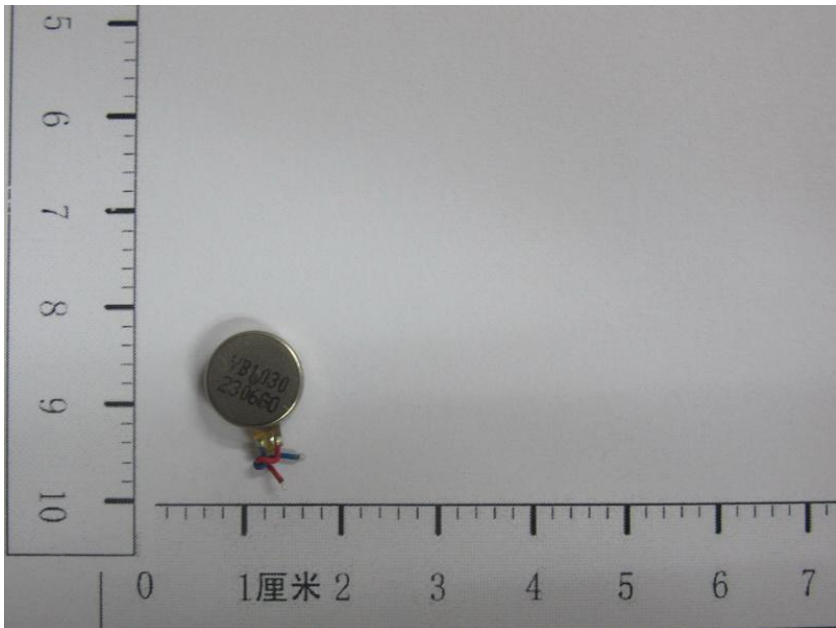
名称：扬声器

料号：TYC2122A1200



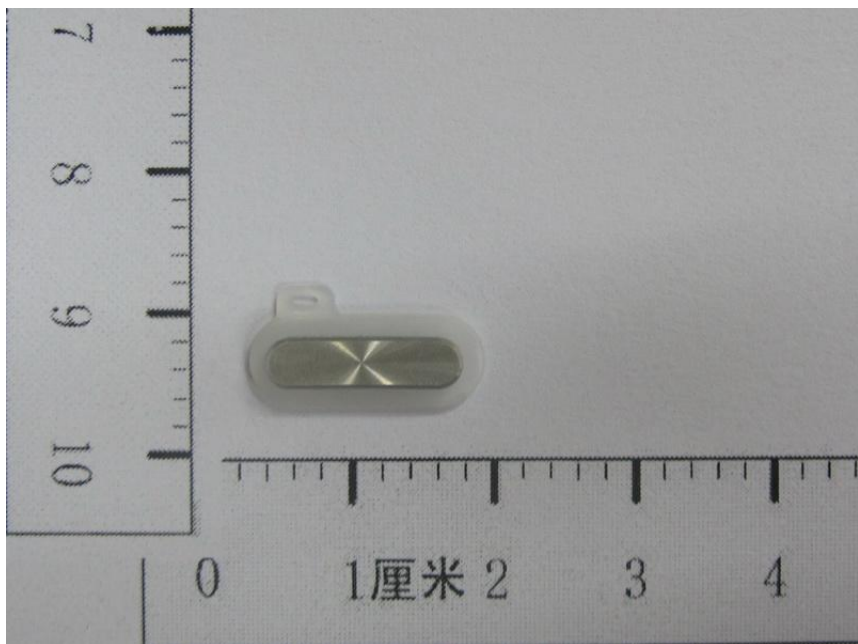
名称：听筒

料号：TYC5913A130163



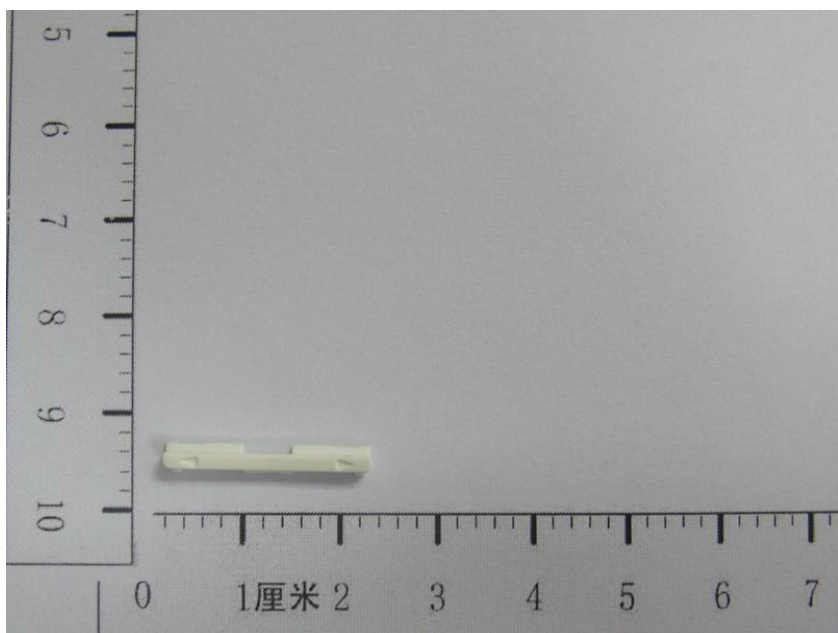
名称：马达

料号：TYC2217A1501



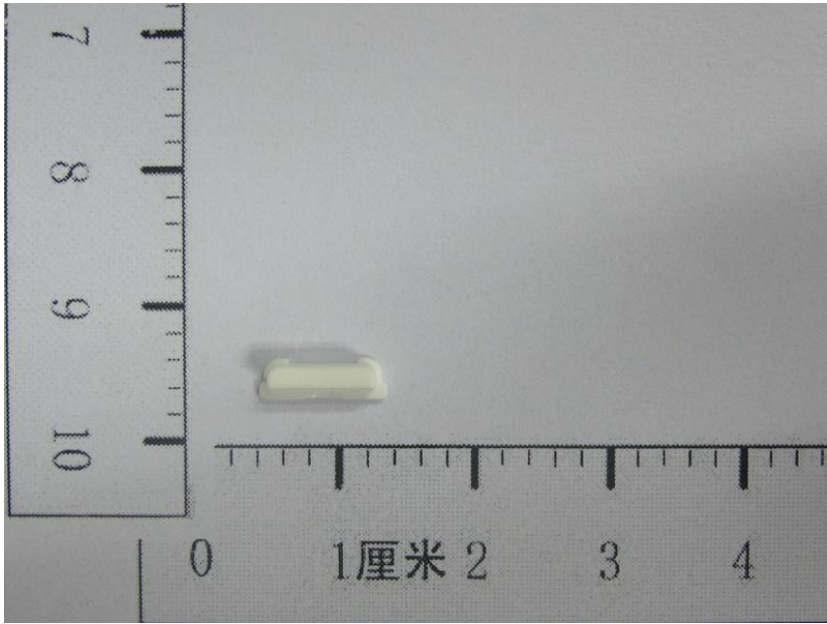
名称：主按键

料号：TYC9601A060224



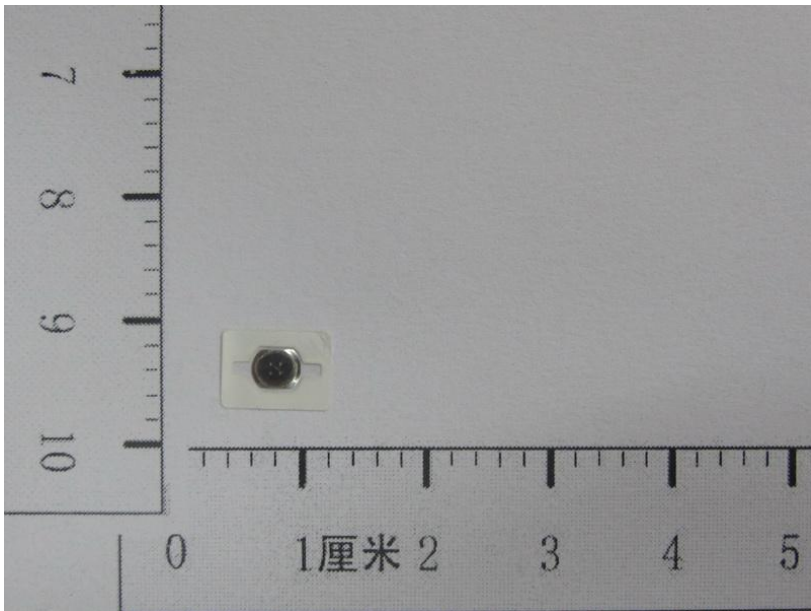
名称：音量键

料号：TYC9601A060109



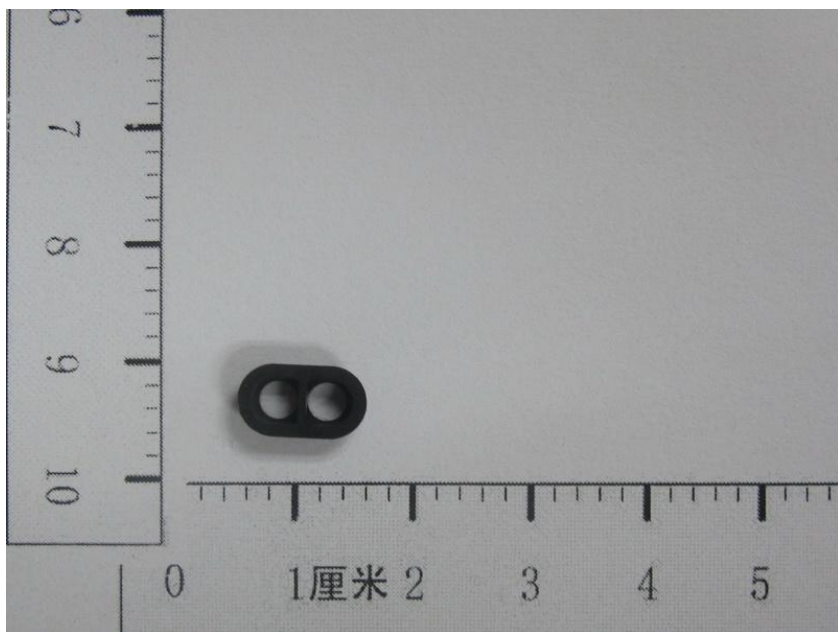
名称： 开机键

料号： TYC9601A060009



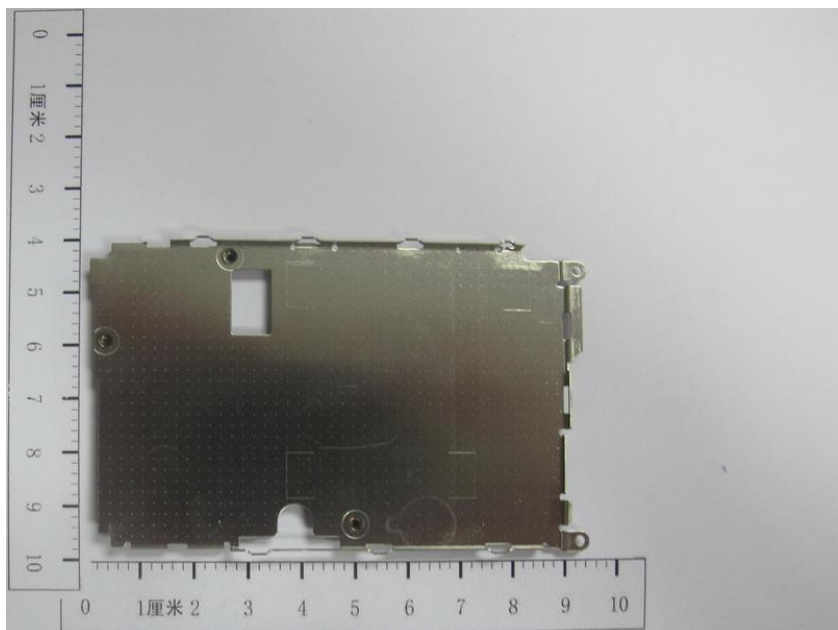
名称： DOME

料号： TYC5913A210042



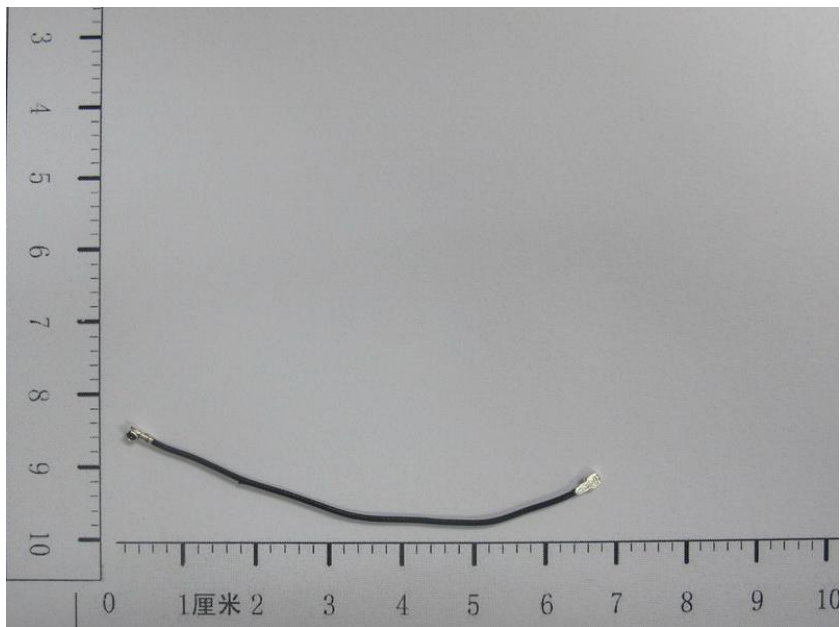
名称：距离传感器硅胶套

料号：TYC9601A230050



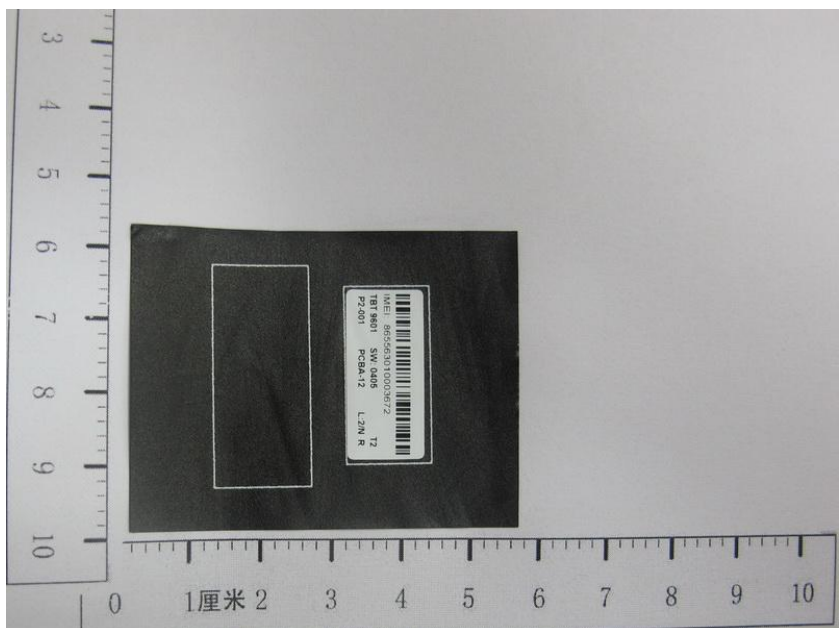
名称：LCD 支架组件

料号：TYC9601A9902P2



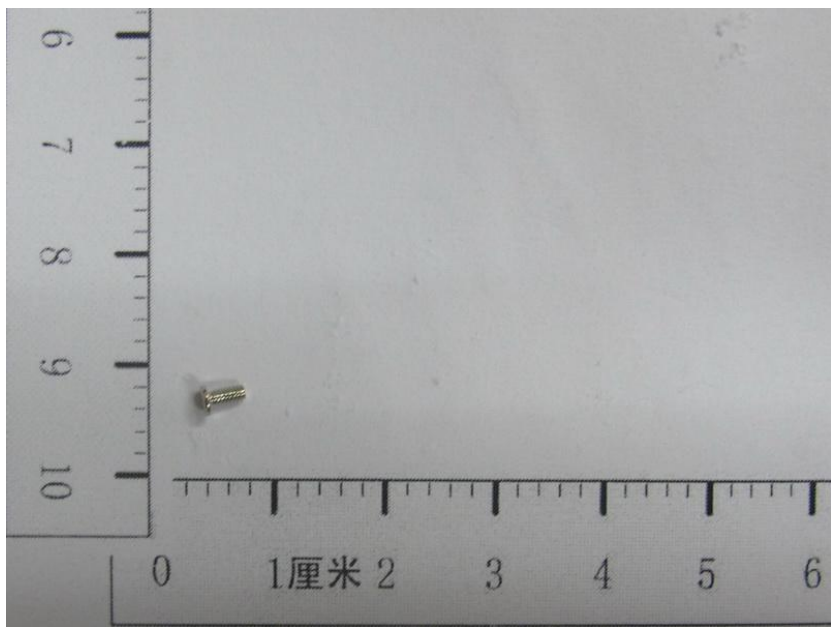
名称：RF Cable 线

料号：TYC9601A2000X5



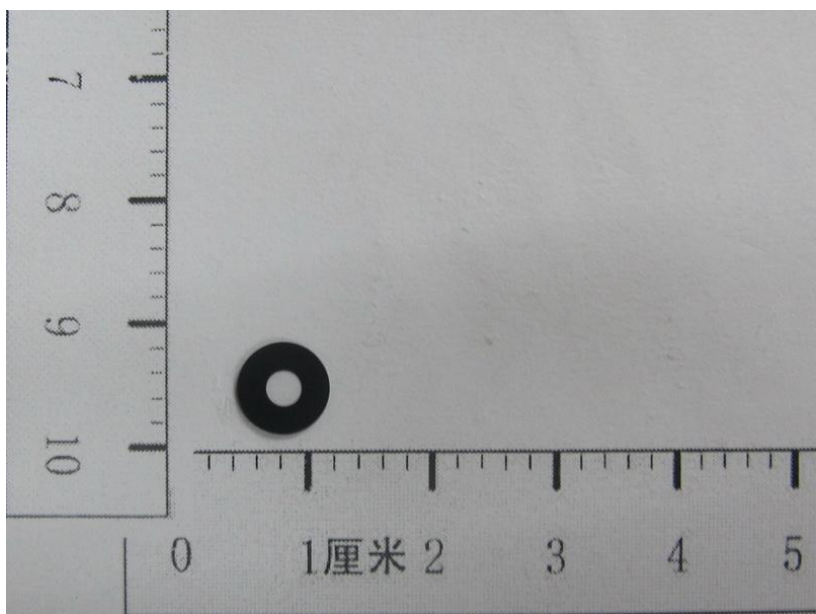
名称：电池仓黑膜

料号：TYC9601A222048



名称：螺钉

料号：TYC9001B1900

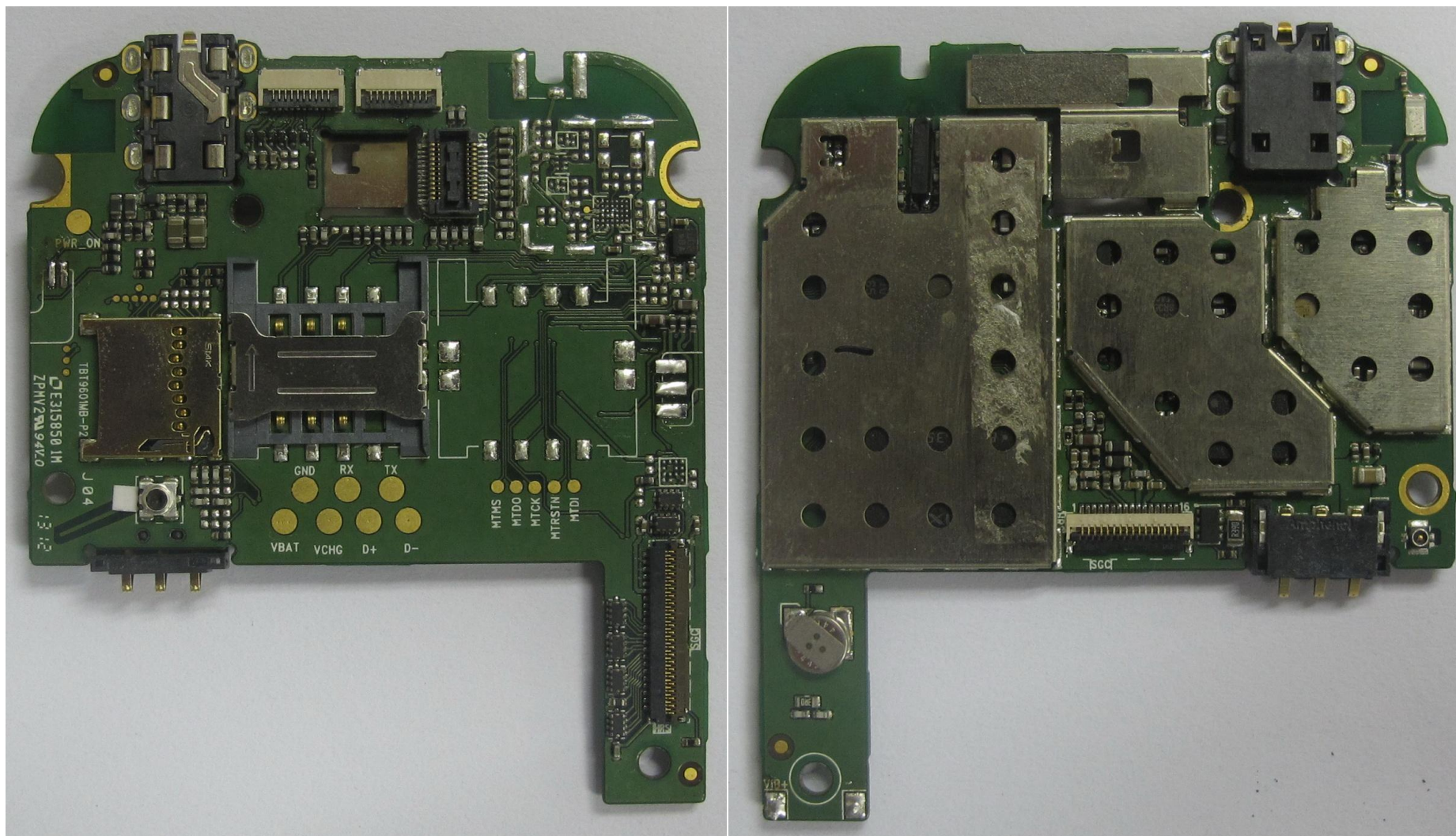


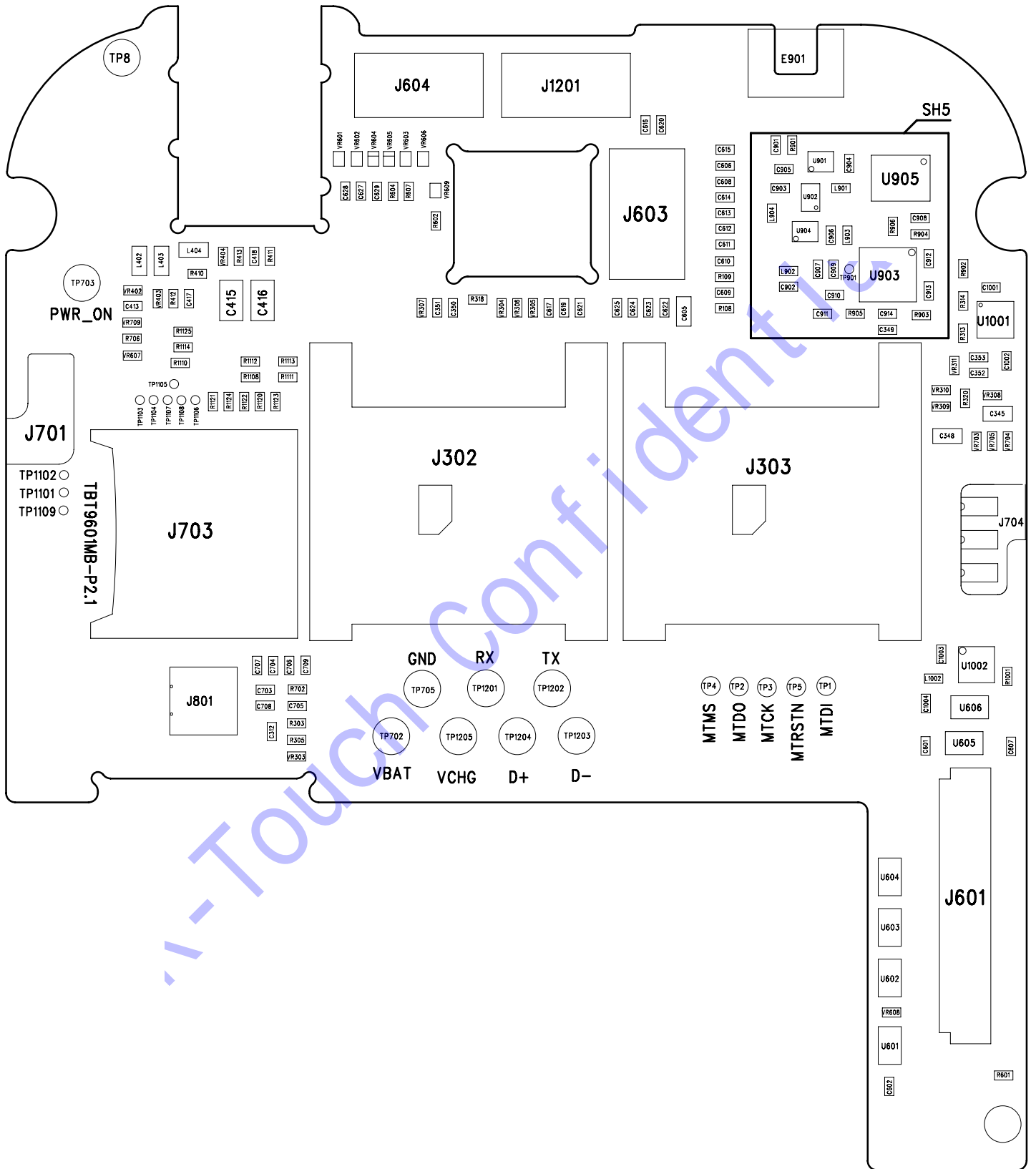
名称：摄像头镜片

料号：TYC9601A070231

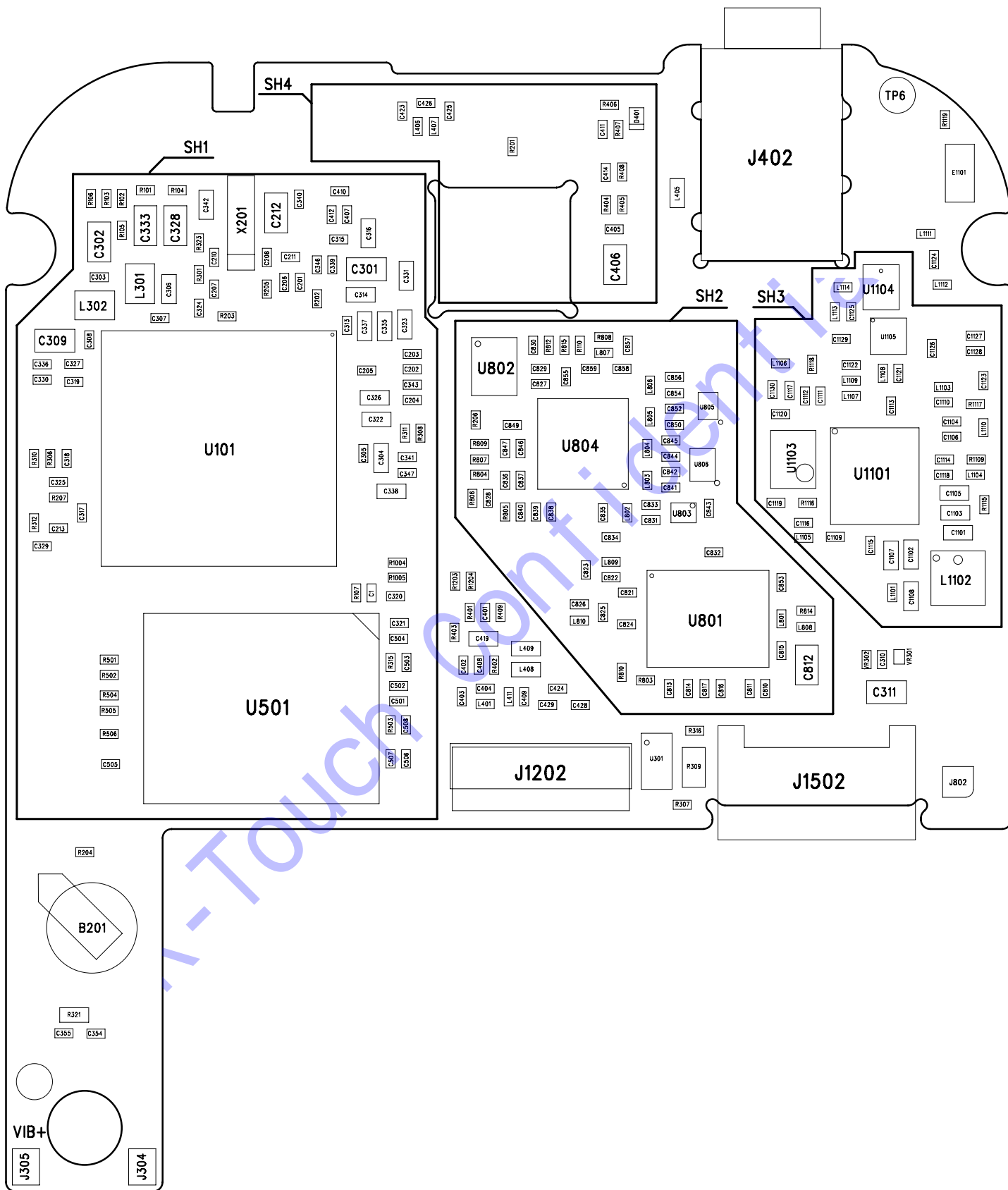
主板外观图

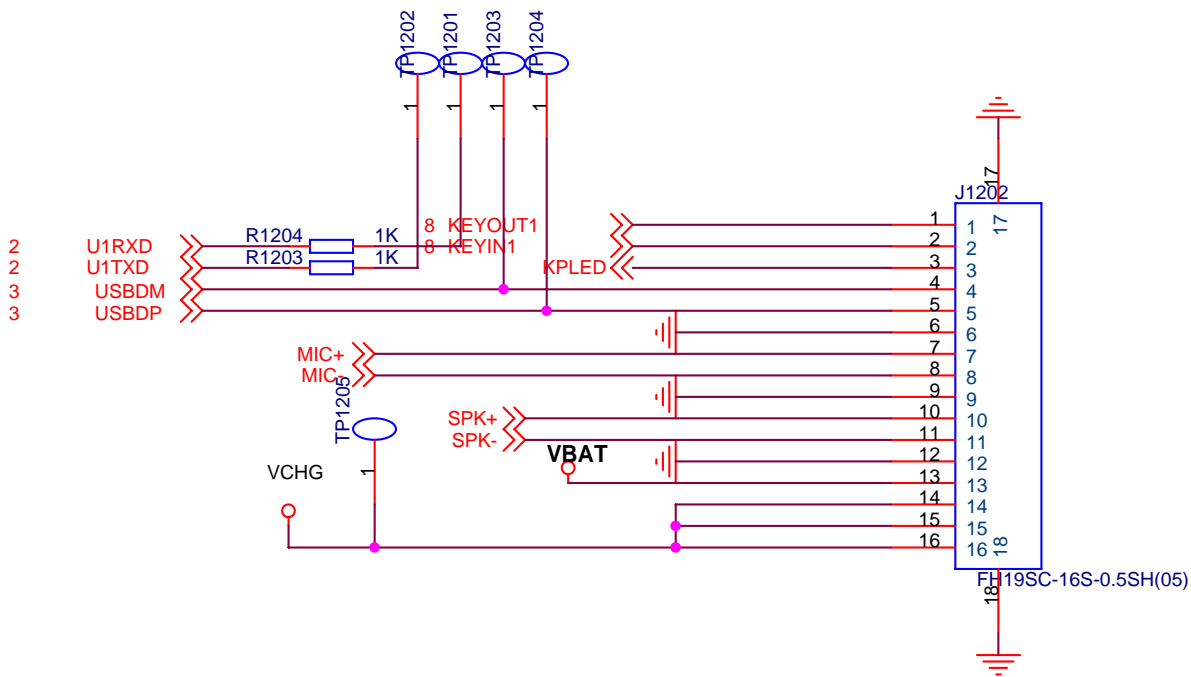
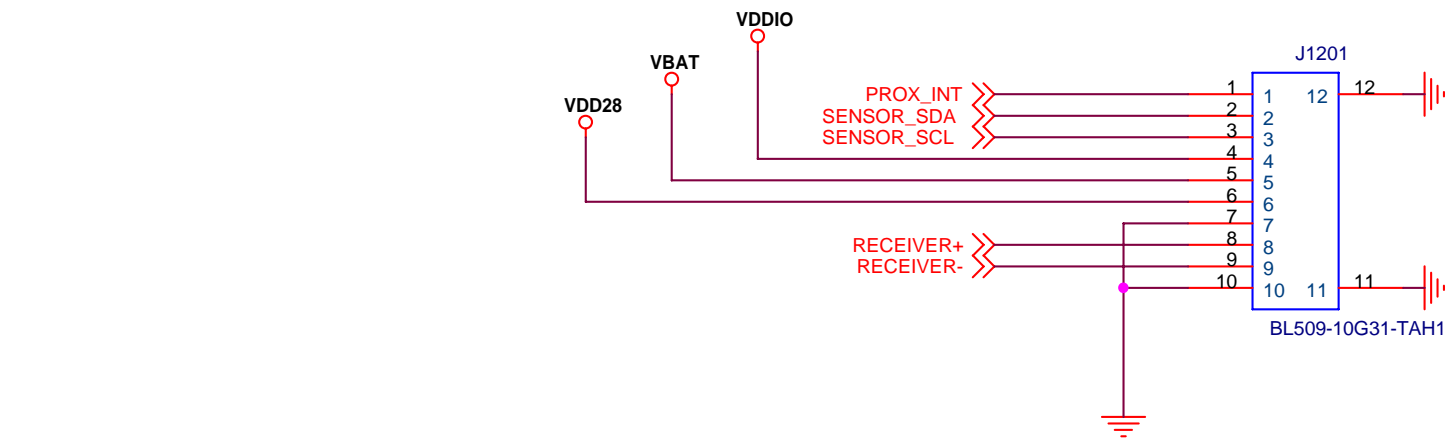
TBT9601 MB P2





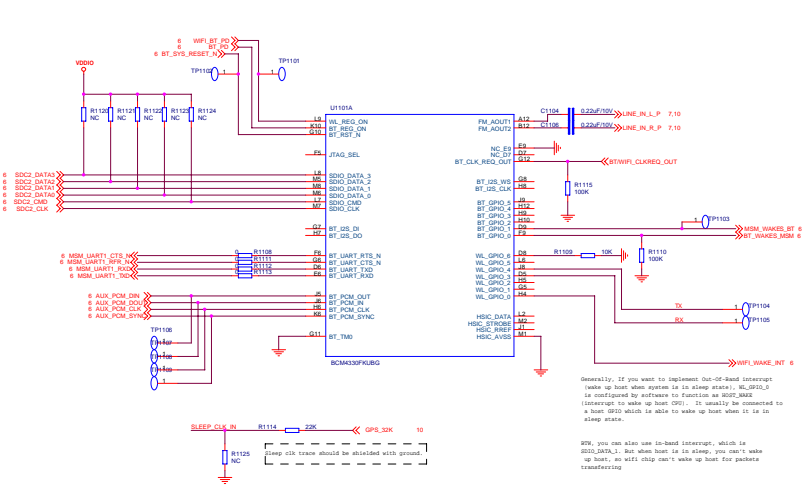
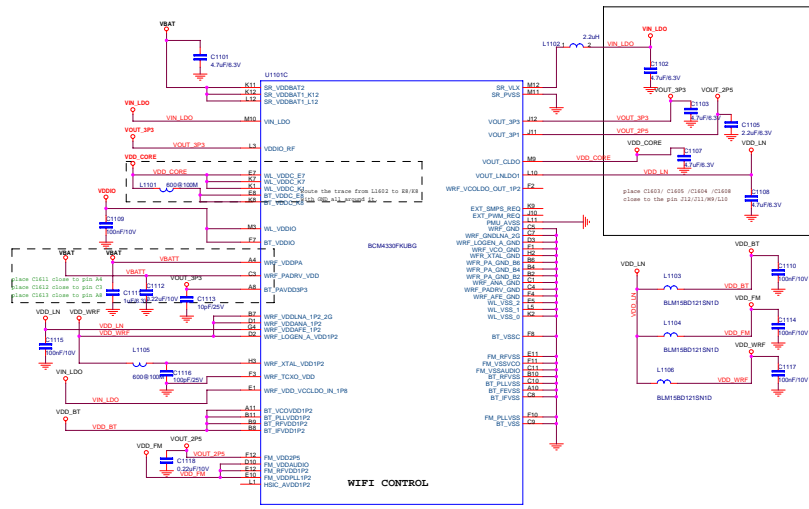
Confidential





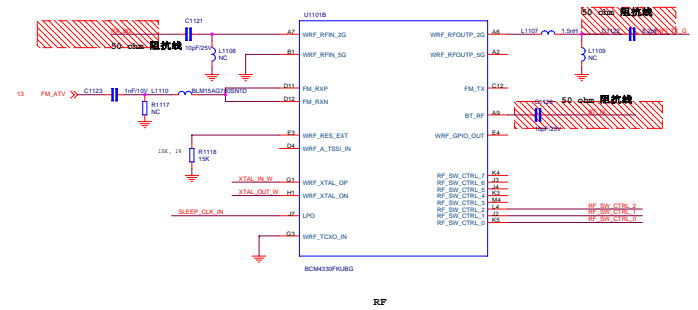
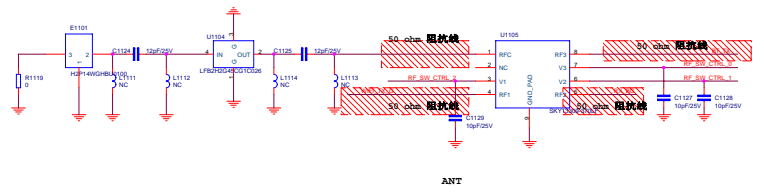
<Core Design>

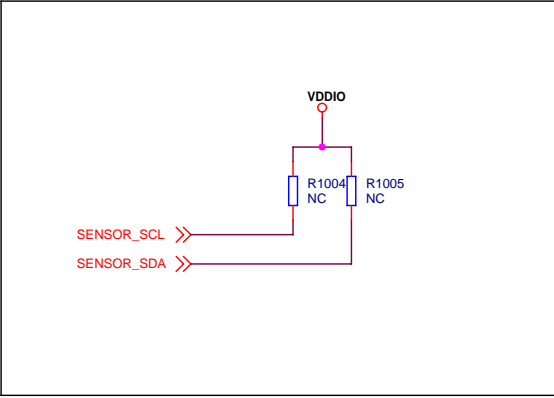
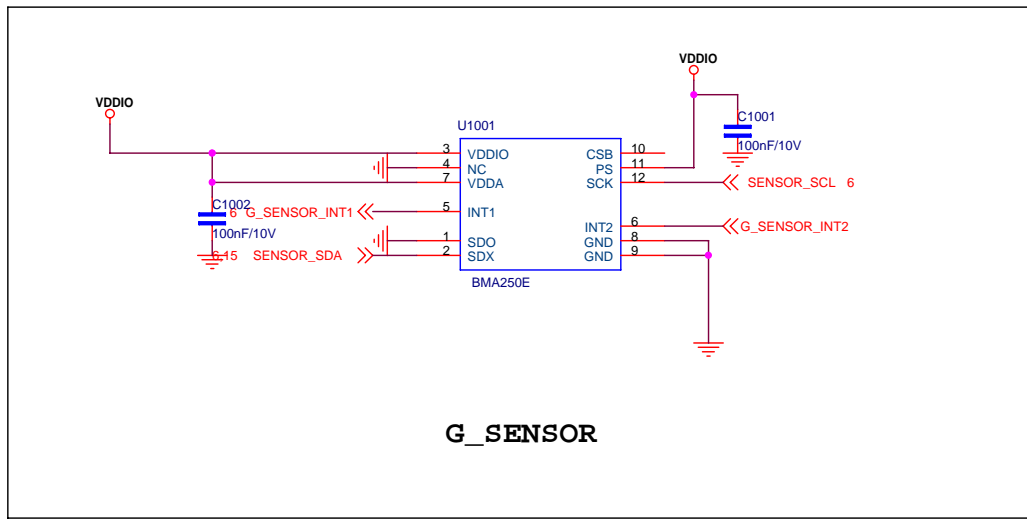
Title		
北京天宇朗通通信设备股份有限公司 K-Touch T580		
Size	Document Number	Rev
A	<Doc>	<RevCode>
Date:	Thursday, January 19, 2012	Sheet 1 of 13



Generally, if you want to implement Out-Of-Band interrupt (wake up host when system is in sleep state), WL_GPIO_0 is configured by software to function as WOL_WAKE (interrupt to wake up host DPO). It usually is connected to a host GPIO which is able to wake up host when it is in sleep state.

BTW, you can also use In-Band Interrupt, which is SD22_DATA_0. But when host is in sleep, you can't wake up host, so WOL chip can't wake up host for presence transferring.

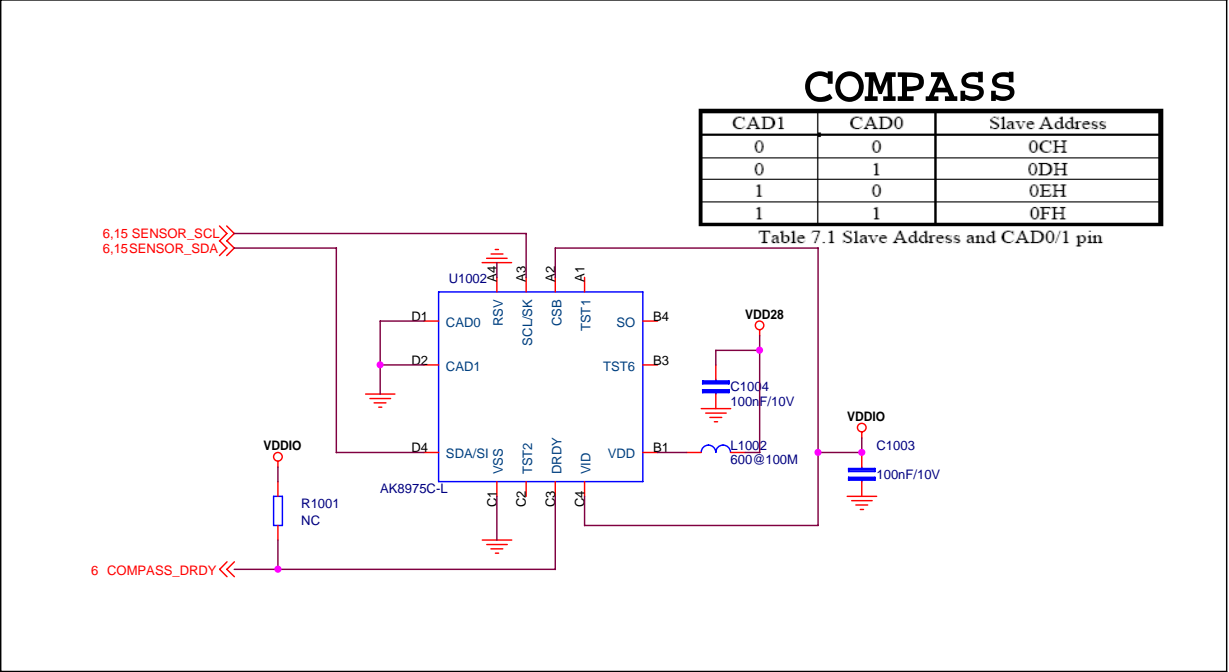




COMPASS

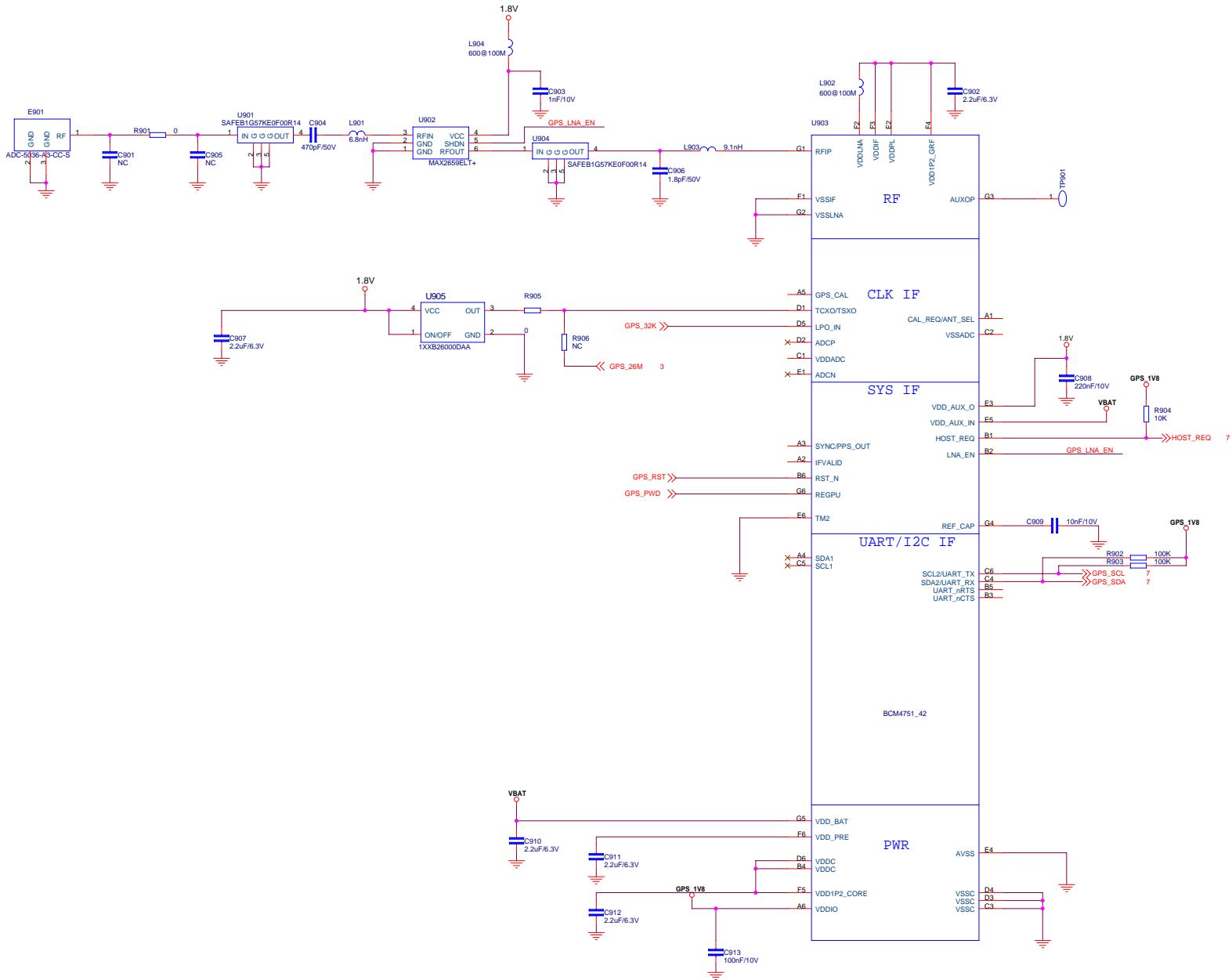
CAD1	CAD0	Slave Address
0	0	0CH
0	1	0DH
1	0	0EH
1	1	0FH

Table 7.1 Slave Address and CAD0/1 pin

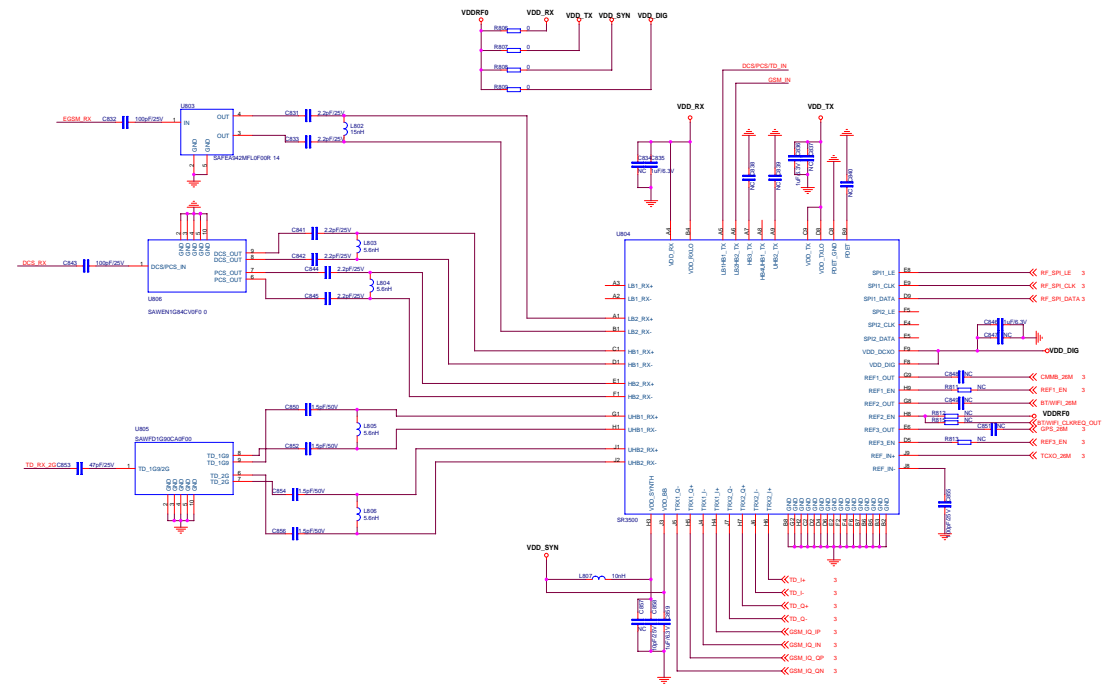
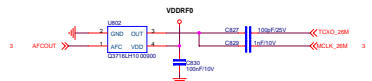
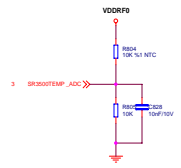
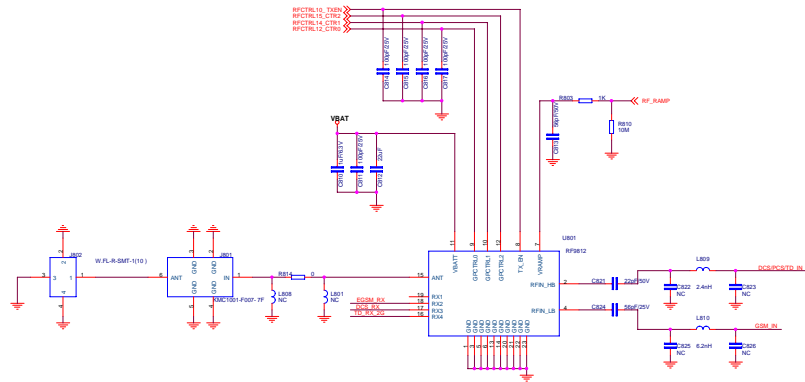


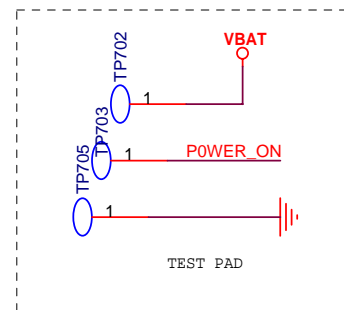
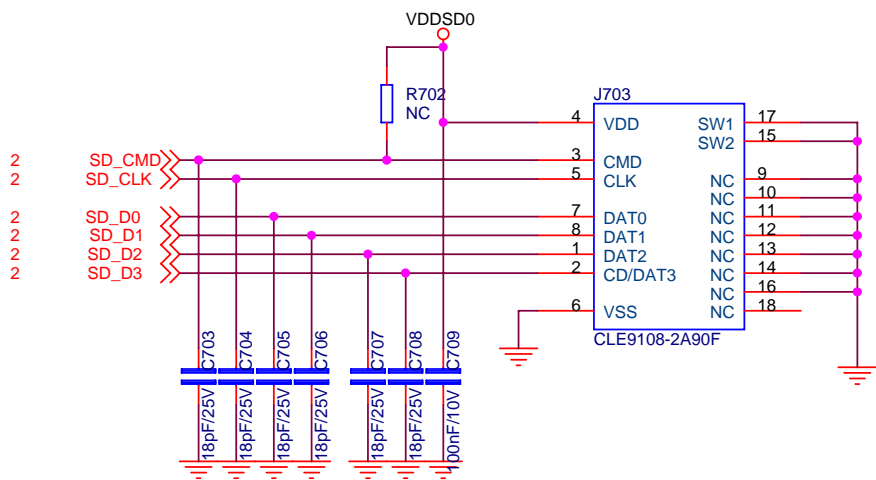
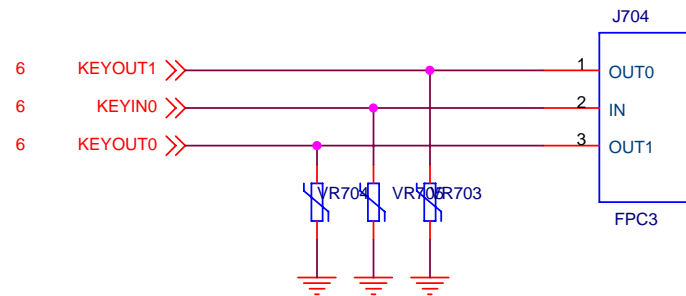
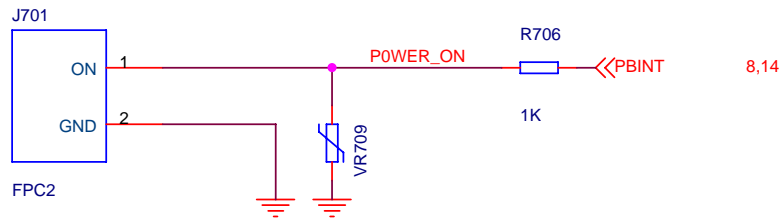
<Core Design>

Title		<Title> 北京天宇朗通通信设备股份有限公司 K-Touch T580	
Size	Document Number	Rev	
B	<Doc>	<RevCode>	
Date:	Thursday, January 19, 2012	Sheet	1 of 13



<Core Design>			
File	<Title> 北京天宇朗通通信设备股份有限公司 K-Touch TS80		
Size	Document Number	<RevCode>	
C	<Doc>	<RevCode>	
Date	Thursday, January 19, 2012	Sheet	1 of 13

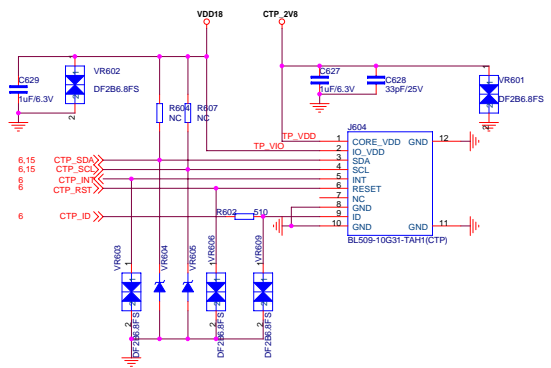
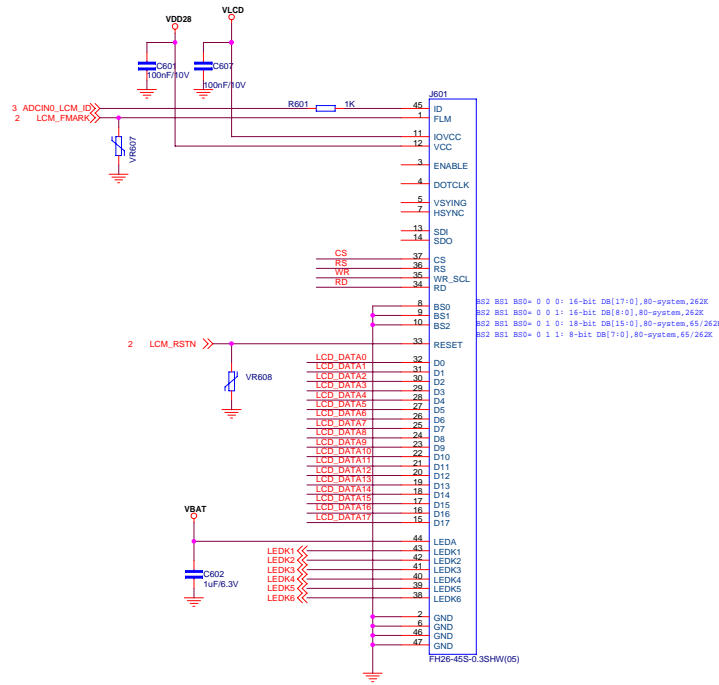
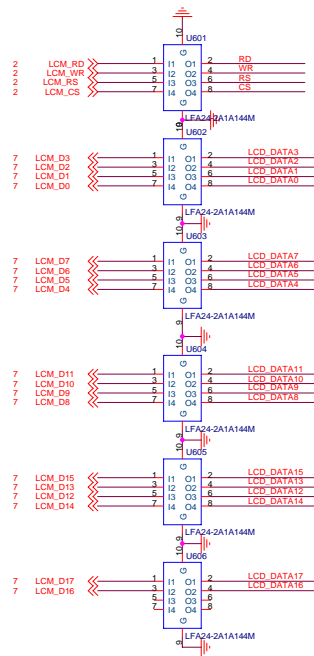




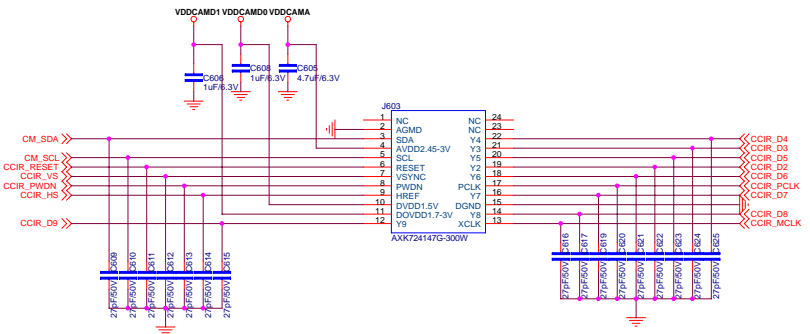
**T
Card**

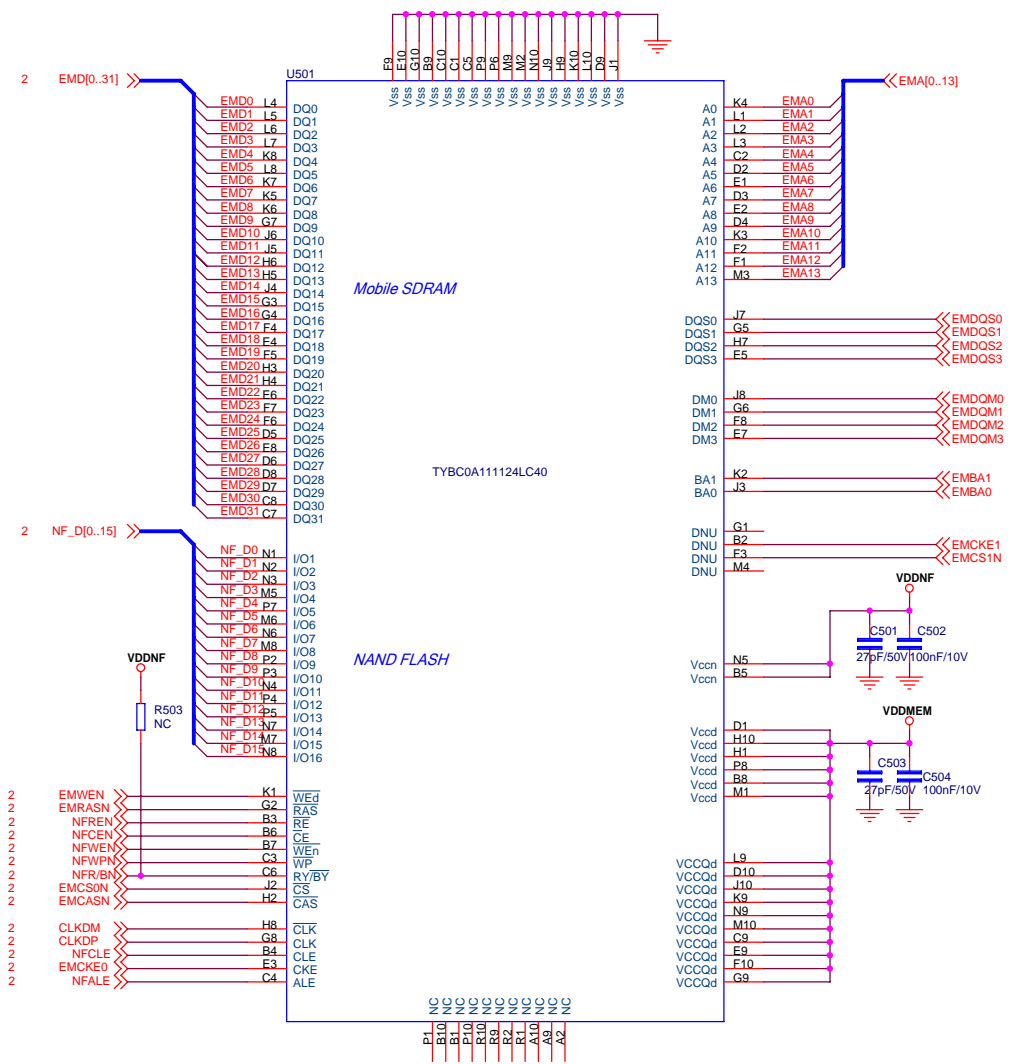
<Core Design>

Title		
<Title> 北京天宇朗通通信设备股份有限公司 K-Touch T580		
Size	Document Number	Rev
A4	<Doc>	<RevCode>
Date:	Thursday, January 19, 2012	Sheet 1 of 13



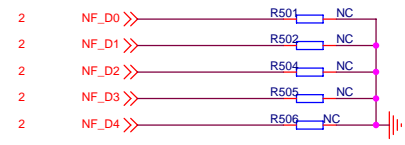
TOUCH SCREEN





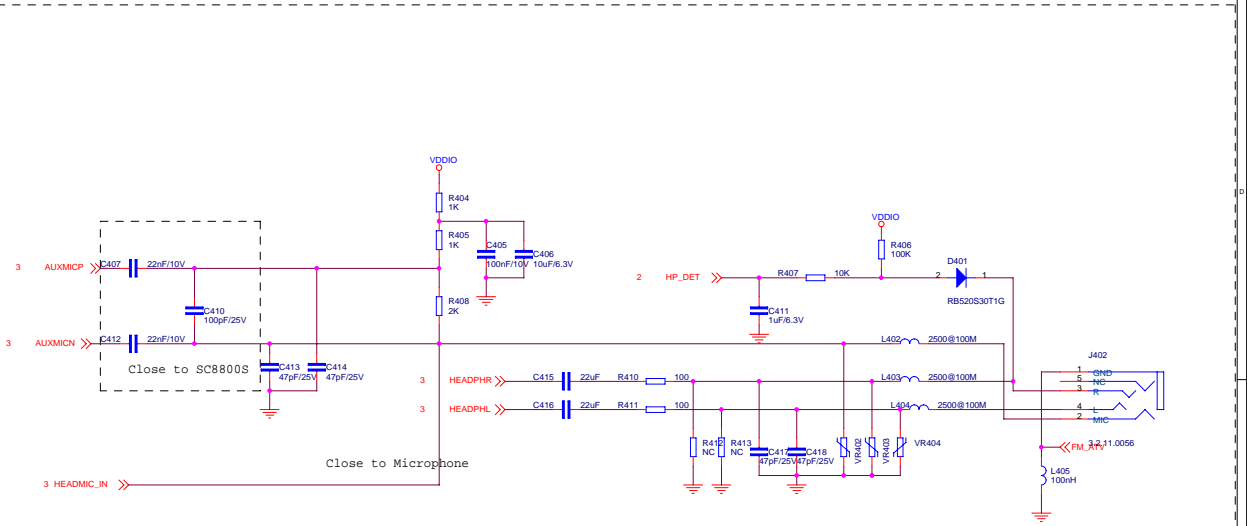
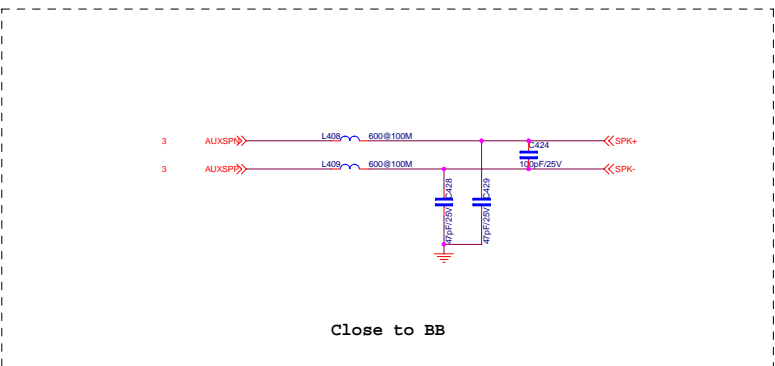
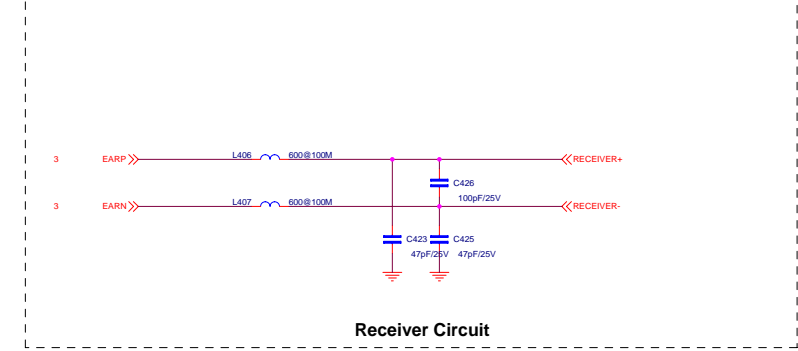
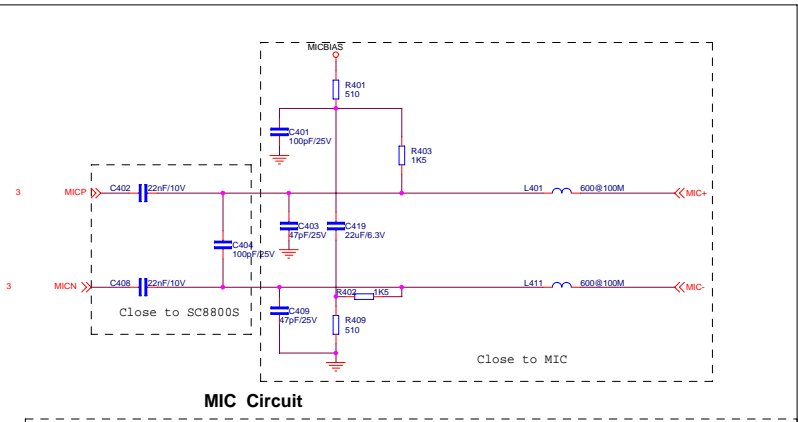
NF_CLE	NFREN	NF
0	0	3.0V
0	1	2.8V
1	0	2.65V
1	1	1.8V

NFWE#	NFALE	VDDIO
0	0	3.0V
0	1	2.8V
1	0	2.65V
1	1	1.8V

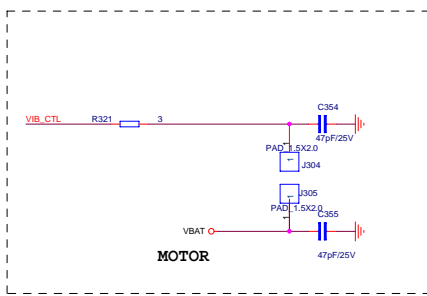
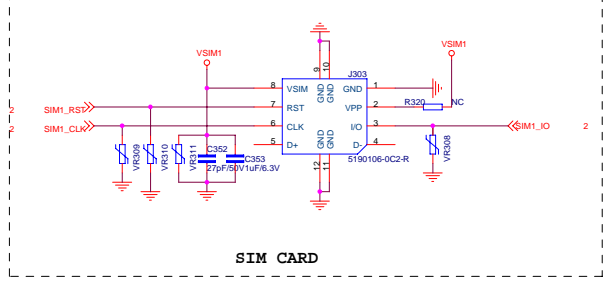
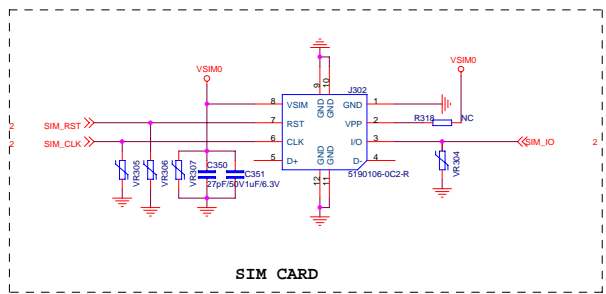
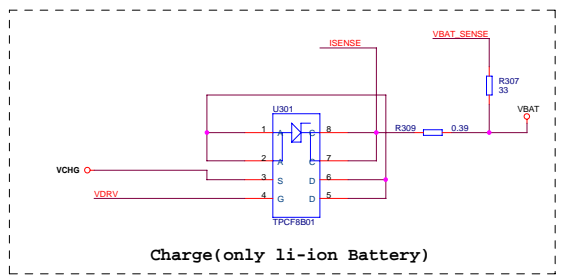
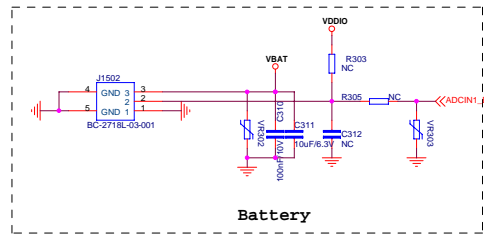
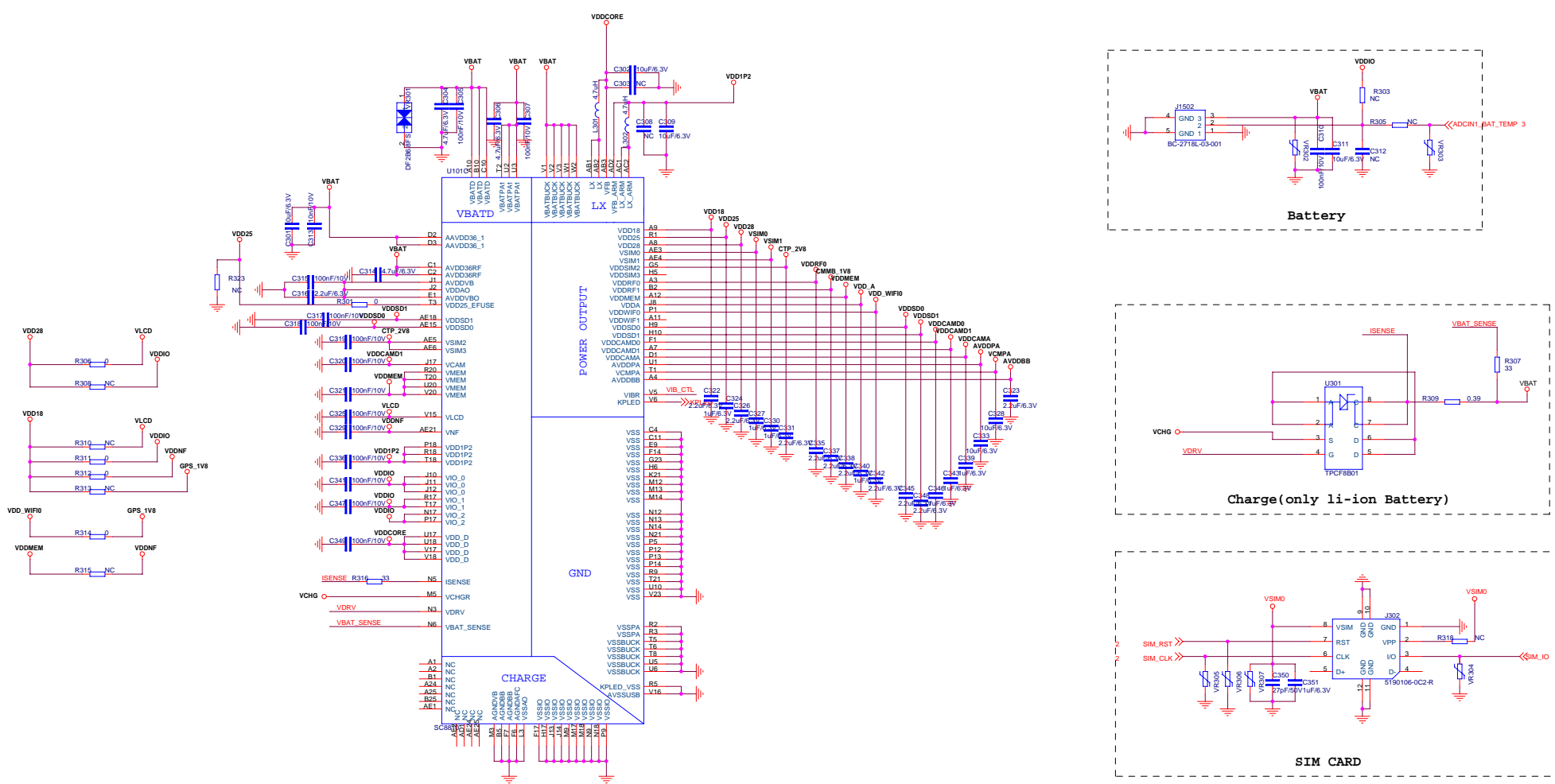


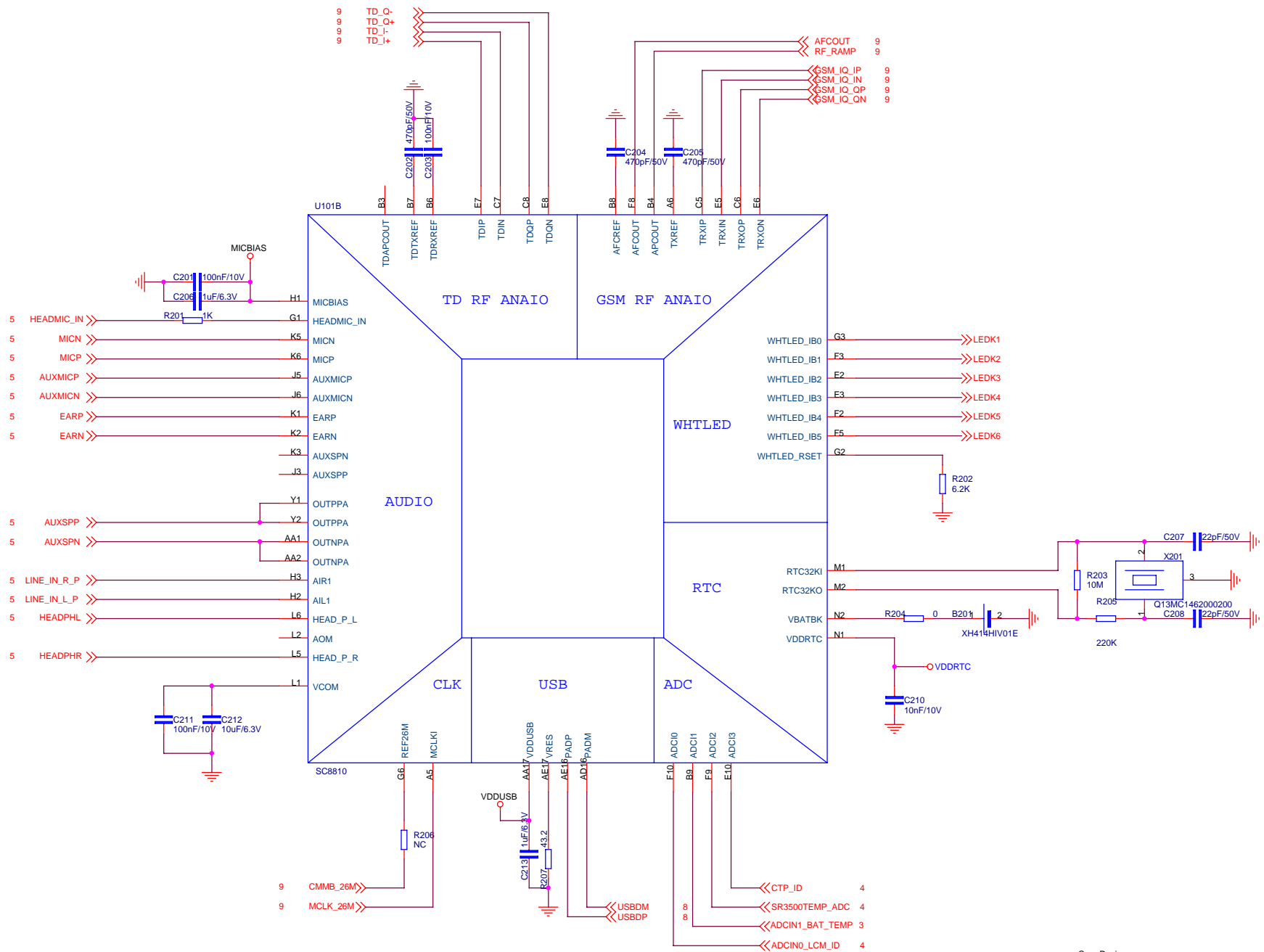
<Core Design>

Title		
北京天宇朗通信设备股份有限公司 K-Touch T580		
Size	Document Number	Rev
A3	<Doc>	<RevCode>
Date:	Thursday, January 19, 2012	Sheet 1 of 13



Core Design			
file	<Title>	北京天宇朗通通信设备股份有限公司	K-Touch T580
Size	Document Number	<Doc>	<RevCode>
Date	Thursday, January 19, 2012	Sheet	1 of 13





<Core Design>

Title		<Title>	
Size	A3	Document Number	南京中兴通讯通信设备有限公司 K-Touch 8810
Date:	Thursday, January 19, 2012	Sheet	1 of 13

