

主机外观图

机型名: U7

上市时间: 2012 年 11 月

size:132x67.8x9.9mm



外观造型



● 硬件规格

网络型式	GSM 850/900/1800/1900MHz, WCDMA 900/2100 MHz
硬件平台	MT6577---- Android 4.0 操作系统
T 卡功能	支持 T 卡槽
外型	PDA
显示屏	4.5" QHD 540*960 IPS 全视角
内存	32Gb+4Gb
电池	Li-Ion 1600mAh
接口	5PIN 充电器接口, 3.5mm 耳机接口 (参考苹果耳机接口)
震动	支持
FM	支持, 耳机天线
Camera	Front: 30w Pixel Rear: 500w Pixel AF OV5647
手写功能	支持, 电容触摸
SPK	单 speaker
内存	32Gb+4Gb
ATV	不支持
电池	Li-Ion 1600 mAh
键盘背光	无
备份电池	RTC
震动	支持

FM	支持 (耳机天线?)
Camera	Front: 30w Pixel Rear: 500w Pixel AF
蓝牙	Bluetooth 3.0 HS
接近传感器	支持
加速度传感器	支持
环境光感应	支持
天线	GSM、GPS、BT 、WIF
手写功能	支持(电容)
Wifi	支持
GPS	支持
闪光灯	支持
touch lens	支持 CTP
指南针	不支持
SIM 卡	UIM and SIM

● 结构规格

机型	PDA 直板
显示屏	4.5" QHD 540*960
摄像头	Front: 30w Pixel Rear: 500w Pixel AF
电池	Li-Ion 1600 mAh
接口	Micro-USB 5PIN
喇叭数量	1 个
按键数量	4 个触控键
侧键数量	2 音量键+1 个开机键+1 个 camera 键
手写	支持(电容)
FM 天线	耳机
闪光灯	支持
蓝牙	支持
SIM 卡	UIM and SIM

拆装机注意事项

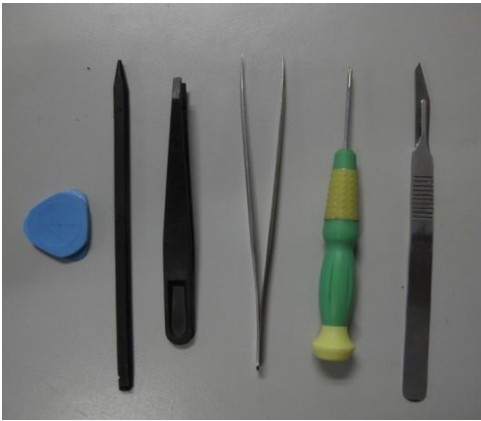
一、拆卸注意事项：

- 1、拆卸触摸屏时需要对触摸屏预热，减轻粘性，温度控制在 80℃，预热时间 3 分钟
- 3、分离触摸屏和液晶屏前需对其预热，减轻粘性，温度控制在 80℃，预热时间 3 分钟
- 3、此机排线接口类较多，拆装时注意不要损坏
- 4、装配功能性组件时注意极性，不要装反

二、所需工具：

拨片、撬棍、塑料镊子、防静电镊子、螺丝刀、手术刀

电烙铁



三、步骤



1. 按图示方向从扣手位处把电池盖打开并移开电池盖组件；

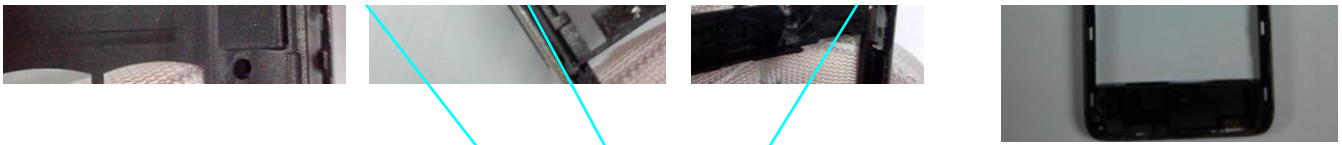


2. 按图示方向取出电池，再用螺丝刀松开图示五颗合壳螺丝；

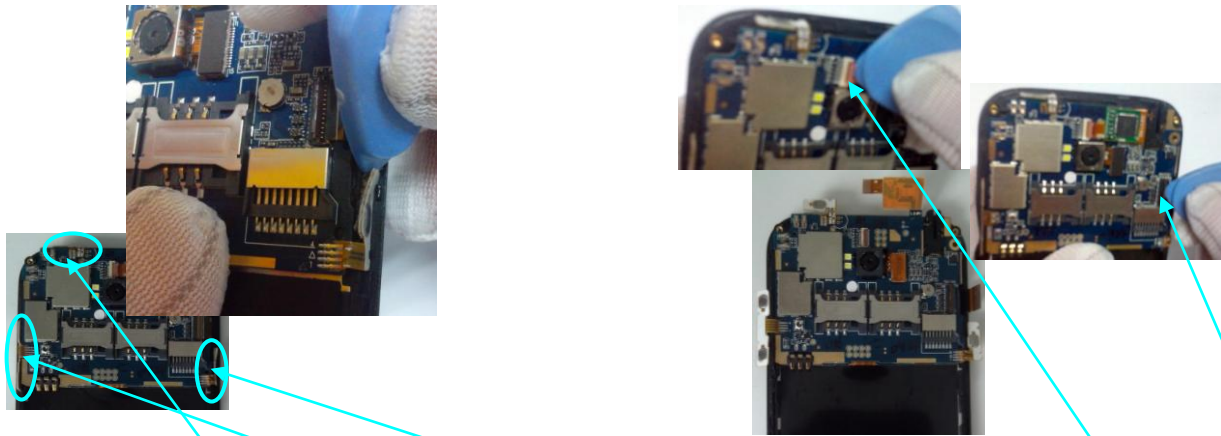


3. 用拨片插入面壳和底壳之间，拆开底壳（注意用塑胶镊子把喇叭从底壳中取出）；

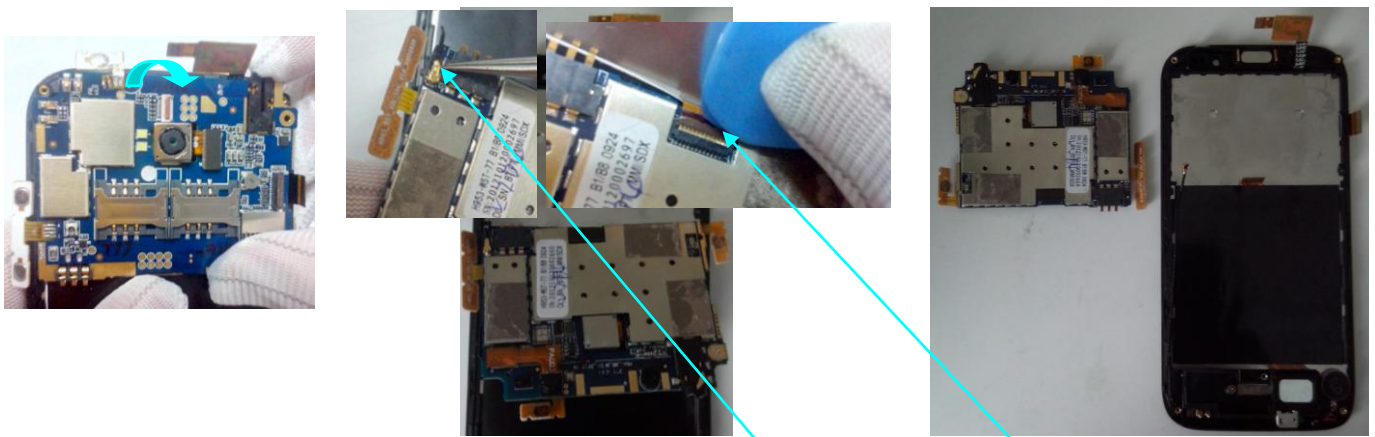




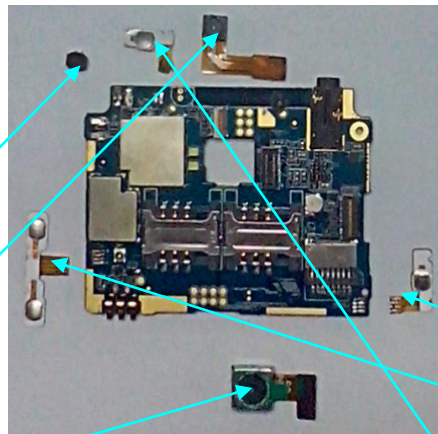
4. 从底壳组件中用塑胶镊子取出开机键、拍照键和音量键；



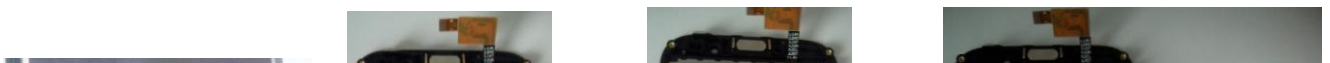
5. 用拨片把开机键FPC、音量键FPC和拍照键FPC从面壳上轻轻掀开、移开；用塑胶镊子把TP/LCD连接器上的泡棉拿开，再用拨片把连接器压盖打开，用塑胶镊子把TP FPC、LCD FPC从主板连接器上取出；把同轴线从主板上取出；



6. 把主板从面壳上轻轻掀开，翻过来；用塑胶镊子把同轴线从主板上取出；用塑胶镊子把USB转接连接器上的泡棉移开，再用拨片把连接器压盖打开，再用塑胶镊子把USB 转接FPC从主板连接器上取出；把主板从面壳上移开；

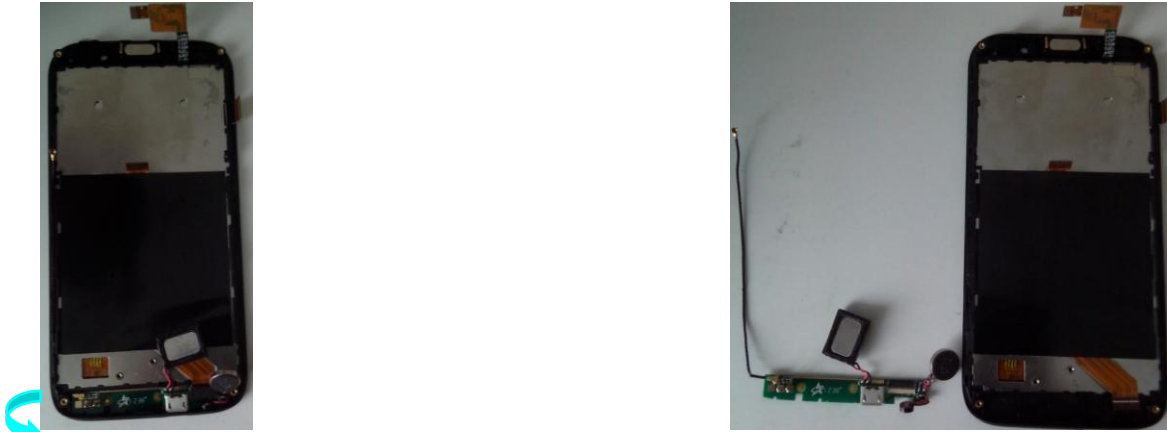


7. 用拨片把前摄像头和后摄像头从主板中取出；用烙铁把开机键FPC、音量键FPC、拍照键FPC及降噪MIC从主板上焊下来；





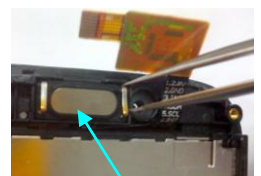
8. 用螺丝刀松开锁支架螺丝，把喇叭、马达从支架、面壳组件上移开，再把喇叭支架从面壳上移开；



9. 用塑胶镊子把小板USB转接连接器上的泡棉移开，再用拨片把连接器压盖打开，用塑胶镊子把USB连接FPC从小板上移开；用塑胶镊子把MIC从面壳中取出，需注意取MIC时不要扯断MIC线；用塑胶镊子把USB小板按图纸方向从面壳中取出；



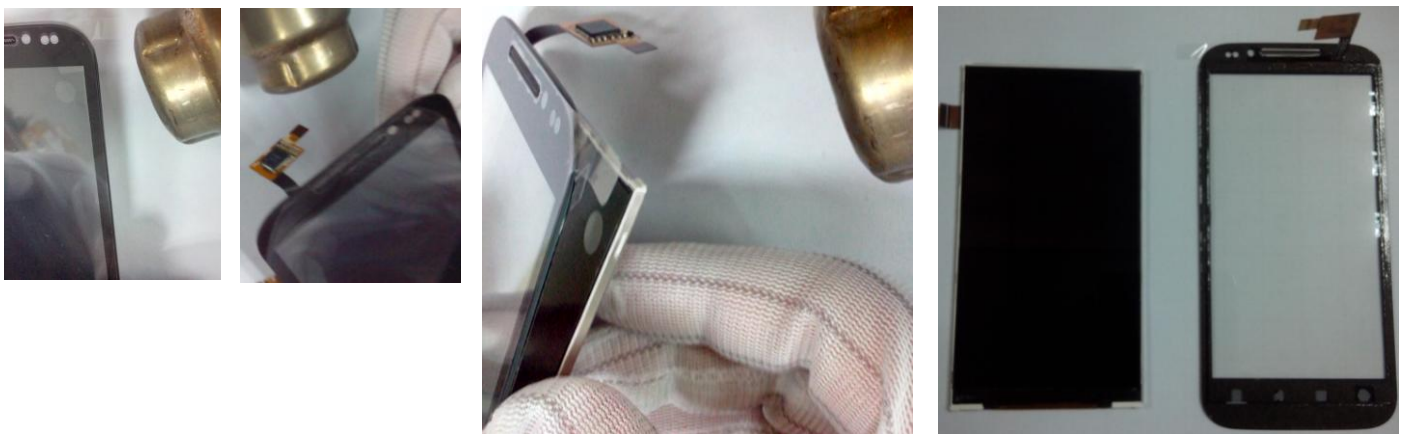
10. 用塑胶镊子把同轴线从小板上取下；用烙铁把喇叭、马达和MIC从小板上焊下来；



11. 把**电池仓贴片**从面壳上撕下来，再取出**USB转接FPC**；用塑胶镊子取出**距离感应胶套**、**听筒**；



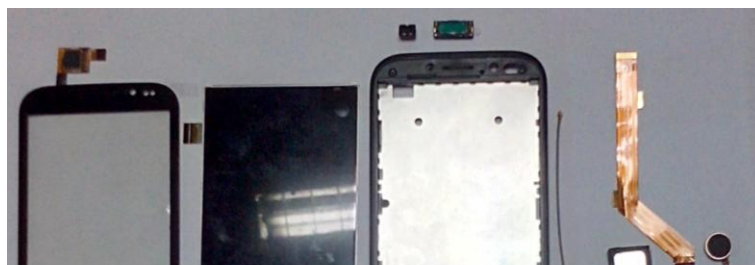
12. 用电吹风或其它加热工具对面壳组件加热（温度60~80度）2~3分钟，立即用拨片先从面壳顶部把TP从面壳组件中拆开，再按照顺序从上到下把TP从面壳取下；



13. 用电吹风或其它加热工具对TP和LCD组件进行加热（温度60~80度）2~3分钟，立即用拨片先从顶部把TP和LCD 分开，然后按照顺序从上到下把TP和LCD拆开；然后用保护膜把TP和LCD显示区盖住保护好；用**石油醚**把TP、LCD上的泡棉胶轻轻擦拭干净；



12. 用塑胶镊子从TP上取出听筒网；





拆机完成

特殊物料识别



名称：显示屏

料号：W380-E-02



名称：前壳组件

料号：W380B-A



名称：后壳组件

描述：后壳组件包括蓝牙天线、GPS 天线、WIFI 天线

料号：W380S-B2



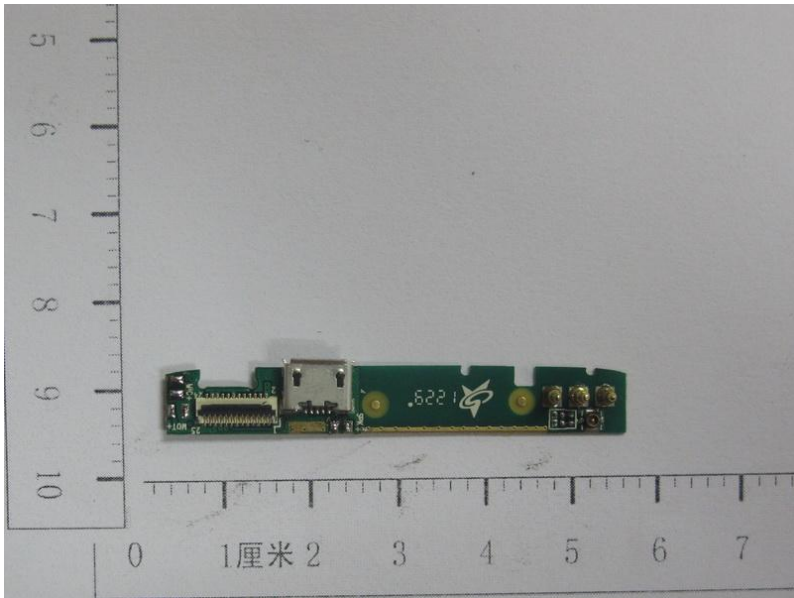
名称：电池盖

料号：W380B-B-08



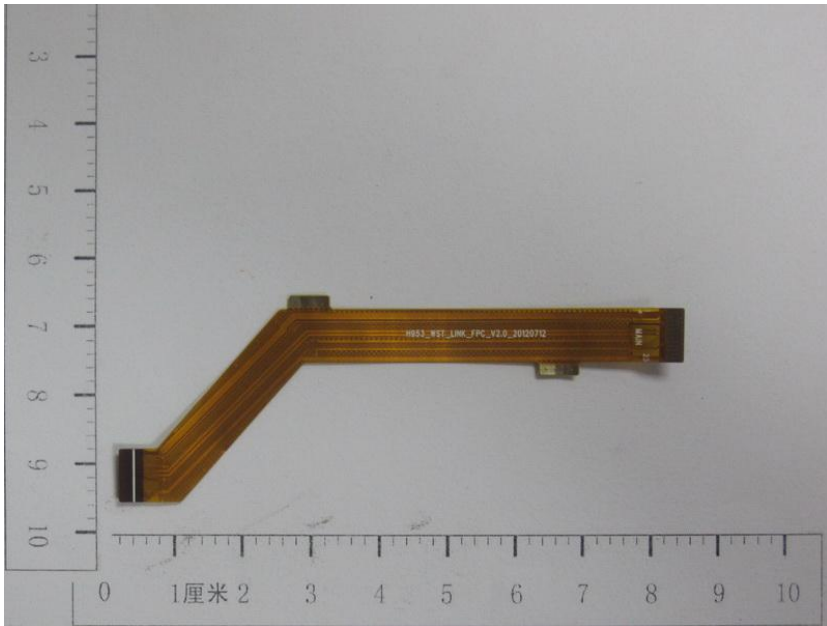
名称：触摸屏

料号：W380B-E-12-02



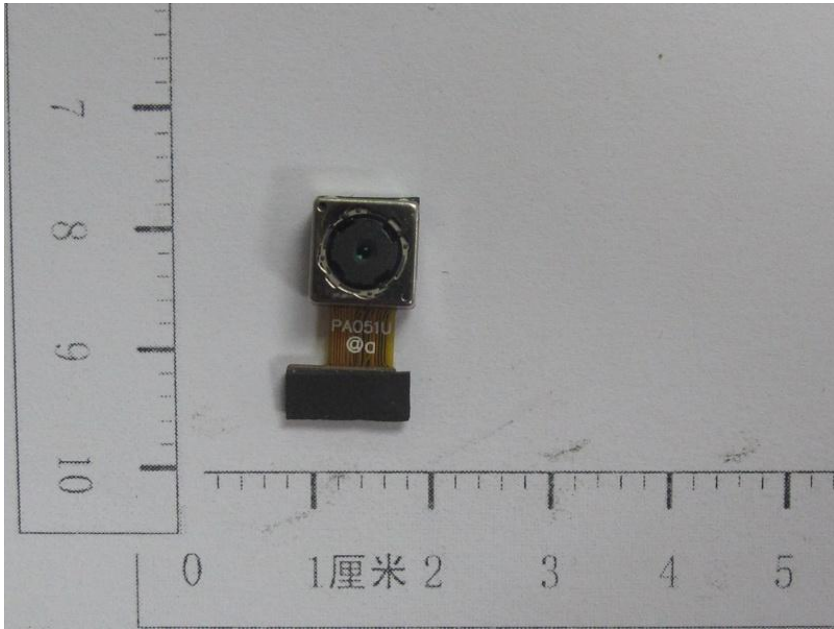
名称：副板

料号：W380-E-11



名称：主 FPC

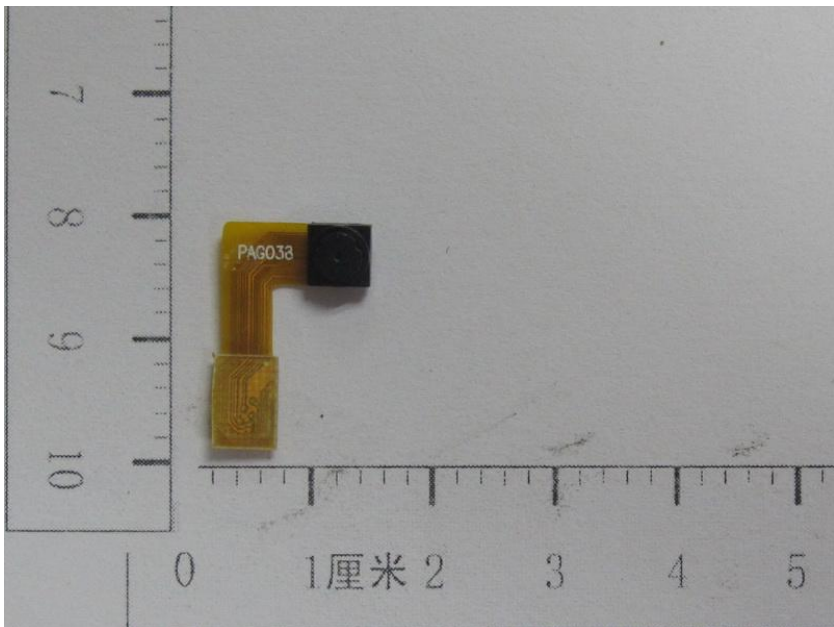
料号：W380-E-09-04



名称：后摄像头

描述：500W

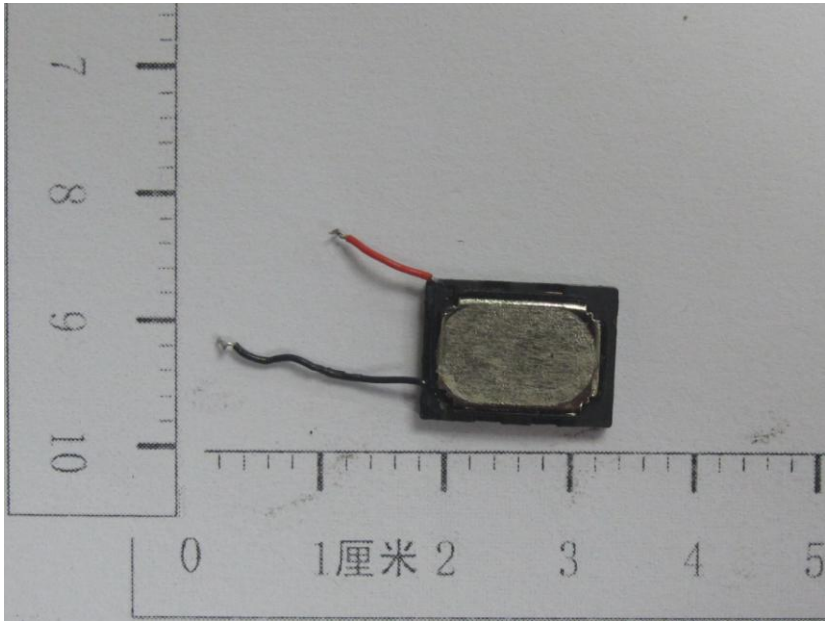
料号：W380-E-03-03



名称：前摄像头

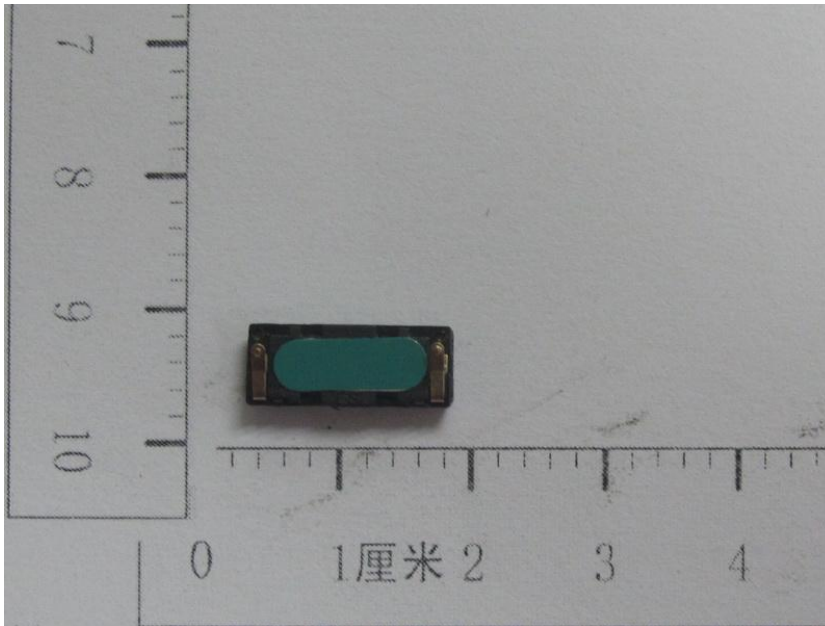
描述：30W

料号：W380-E-03-01



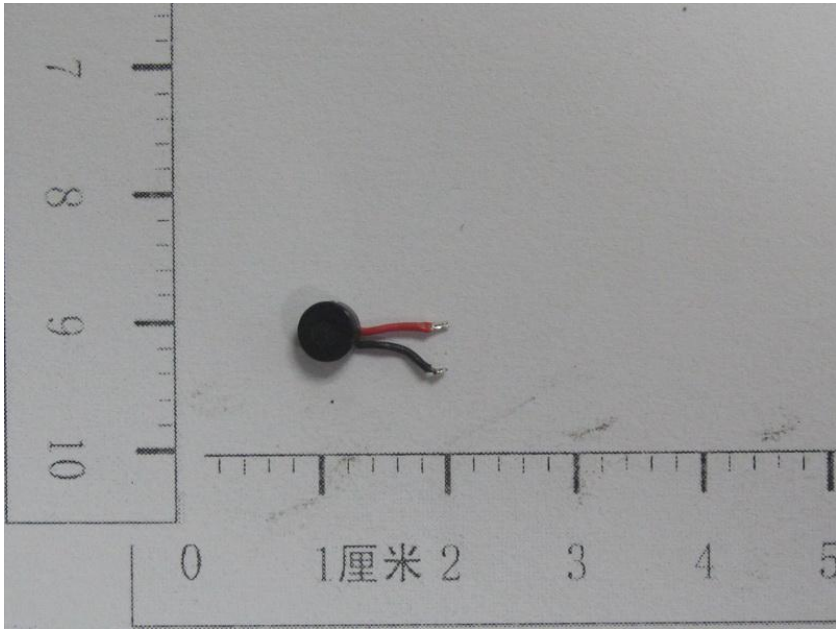
名称：扬声器

料号：W380-E-06



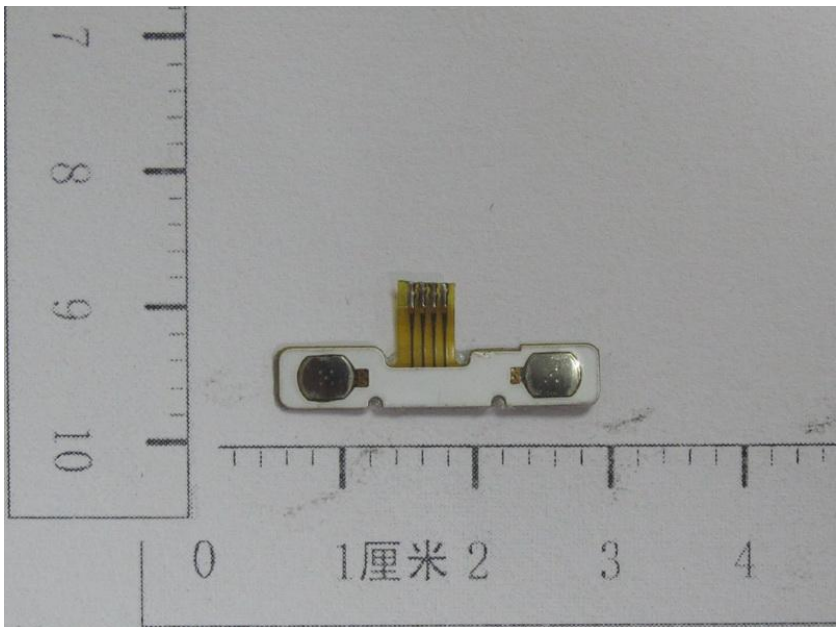
名称：受话器

料号：X200-E-003



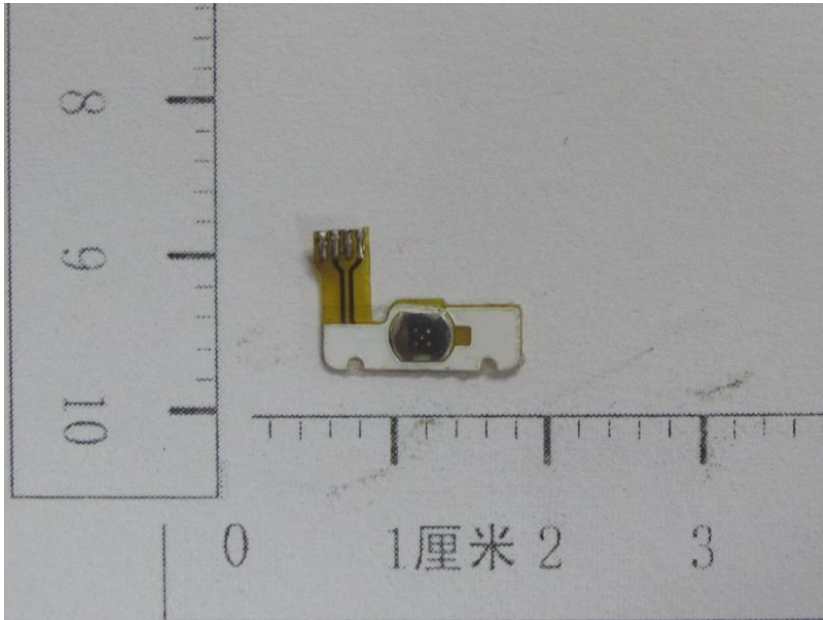
名称: MIC

料号: X700-E-005



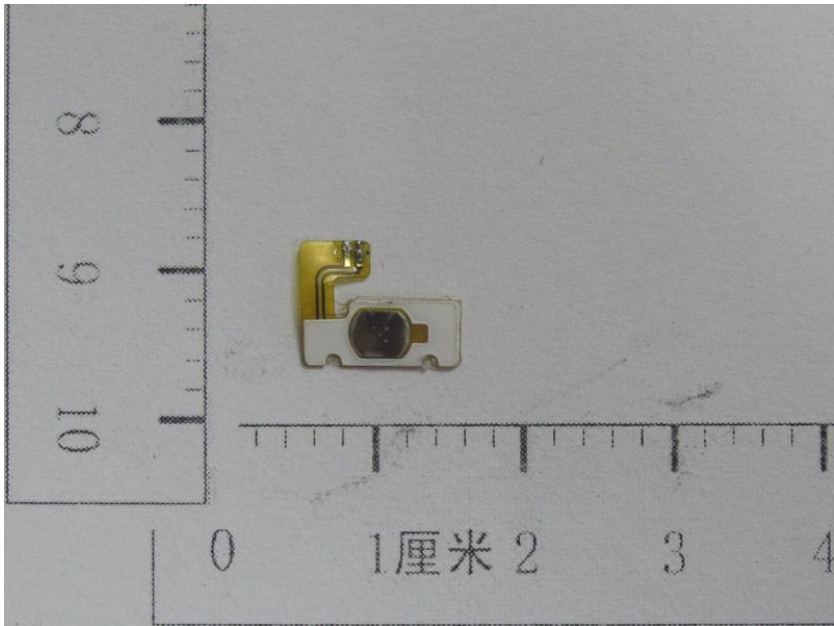
名称: 音量键 FPC(带 DOME)

料号: W380-E-09-02



名称：拍照键 FPC(带 DOME)

料号：W380-E-09-03



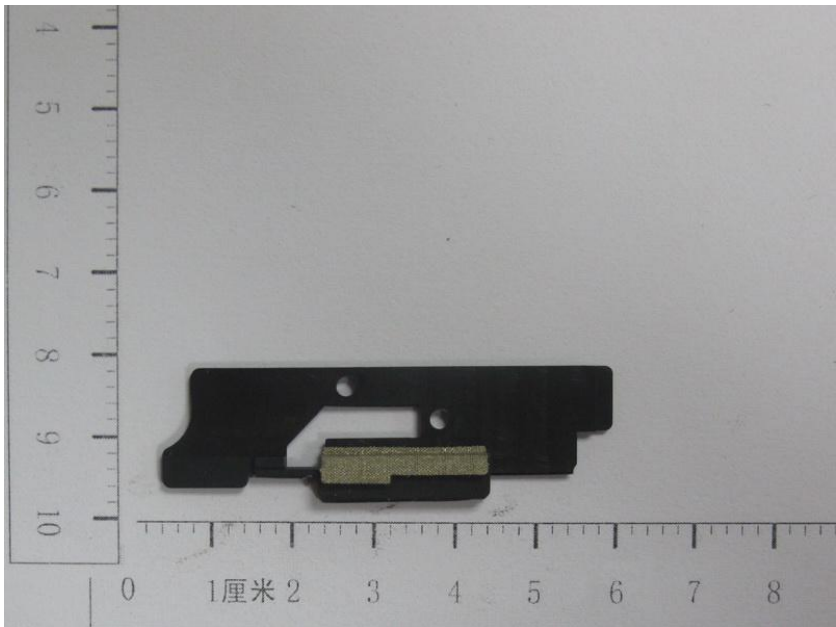
名称：开机键 FPC(带 DOME)

料号：W380-E-09-01



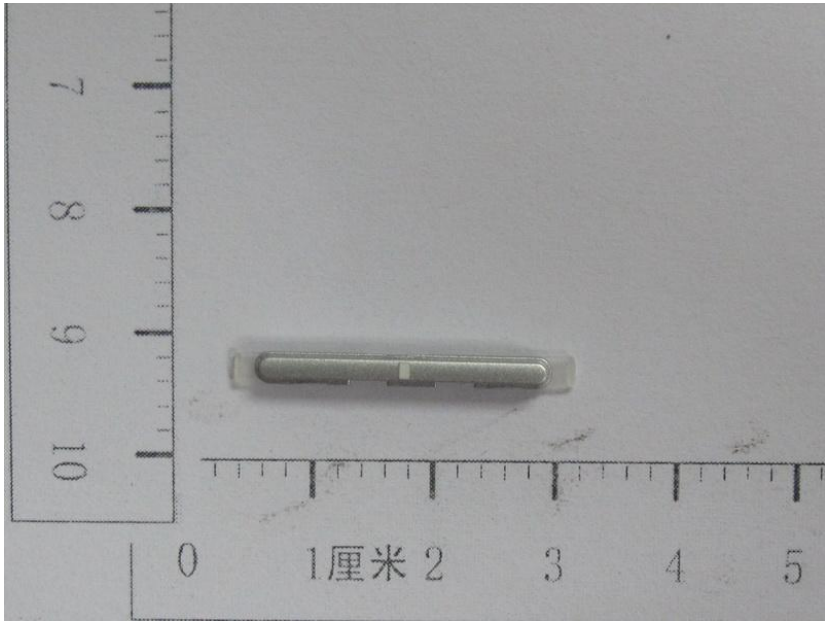
名称：同轴线

料号：W380B-E-13



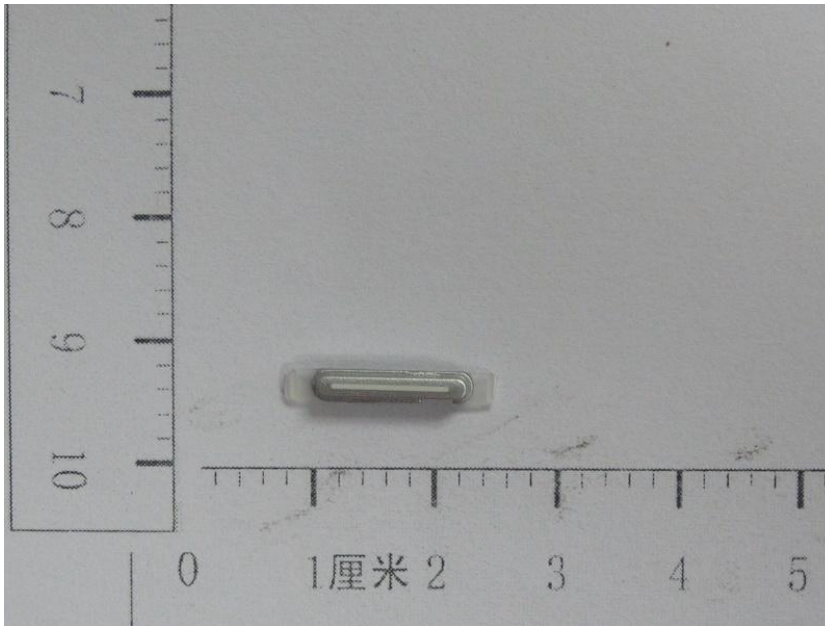
名称：扬声器支架

料号：W380-B-17



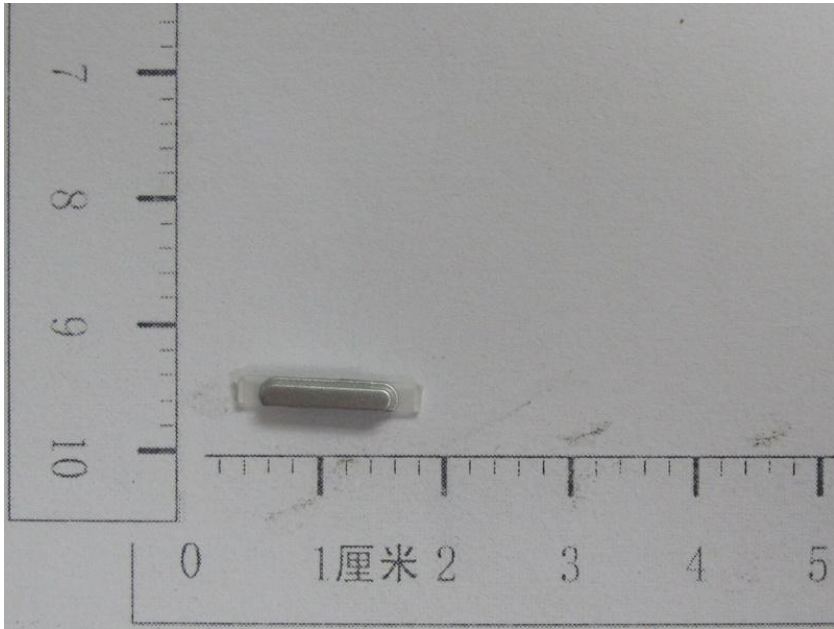
名称：音量键

料号：W380B-B-11



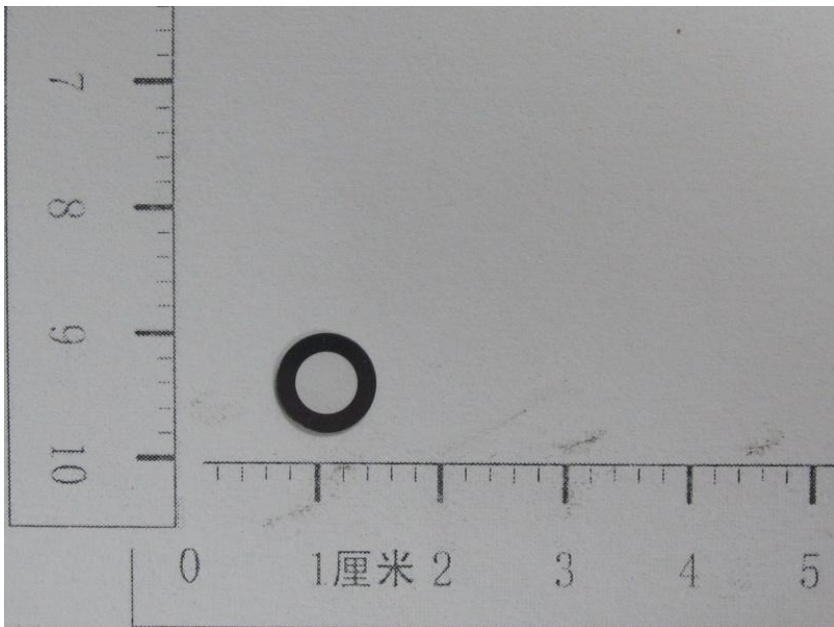
名称：拍照键

料号：W380B-B-12



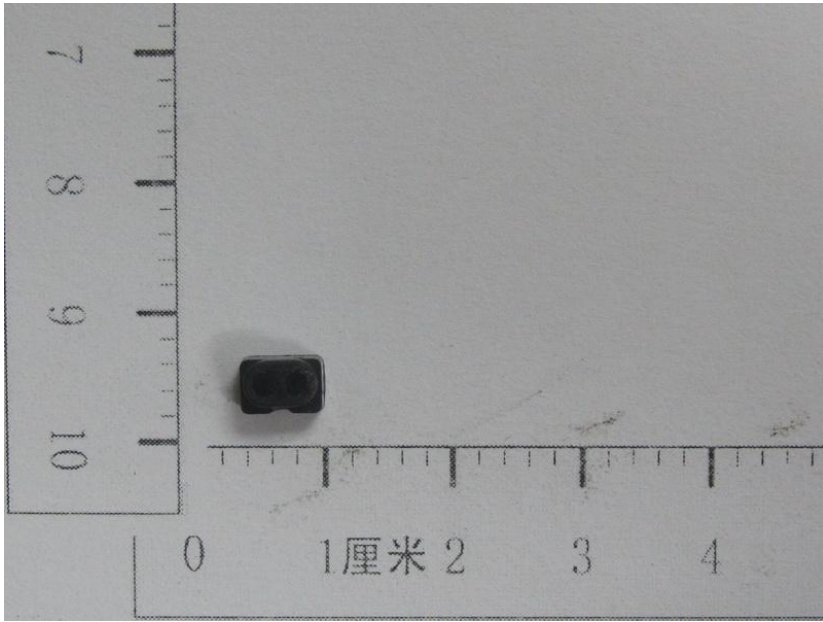
名称：电源键

料号：W380B-B-10



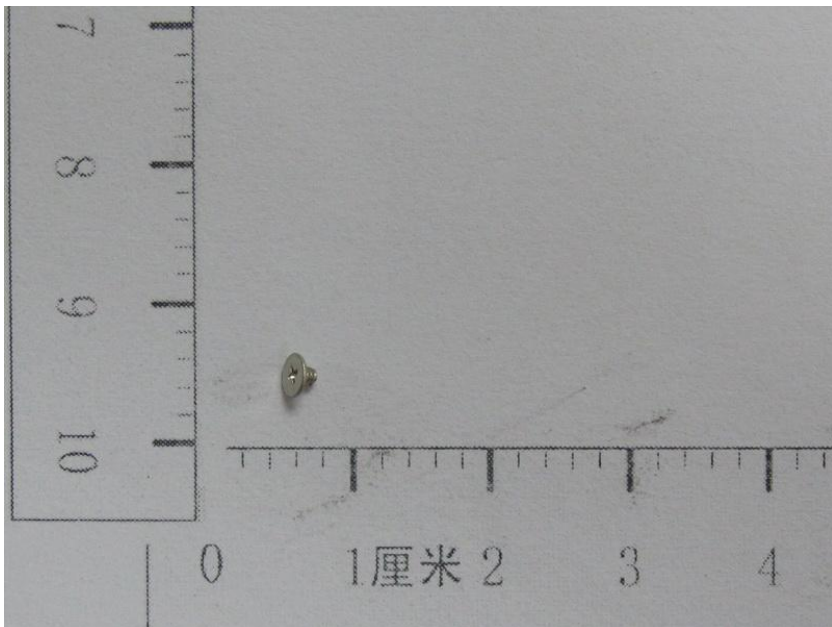
名称：摄像头镜片

料号：W380B-B-09



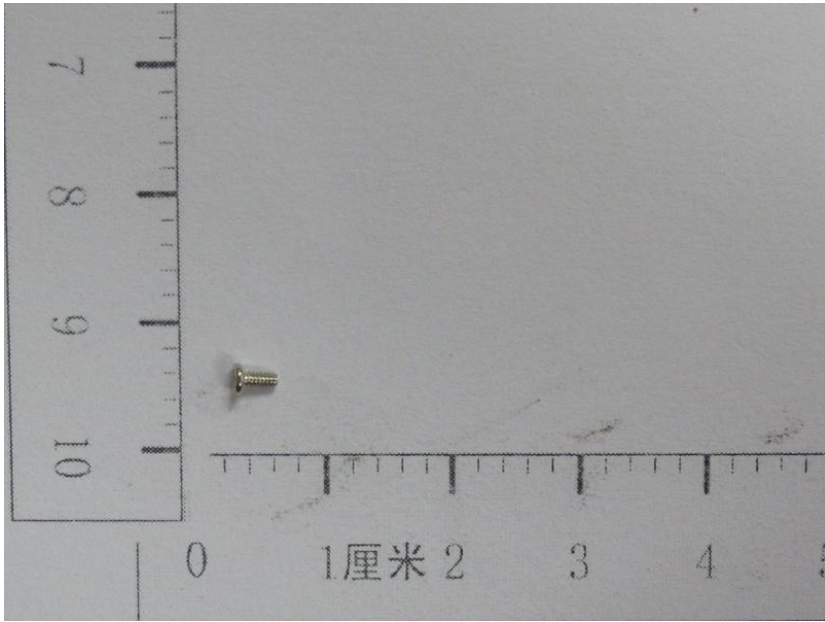
名称：距离传感器胶套

料号：W380B-B-18



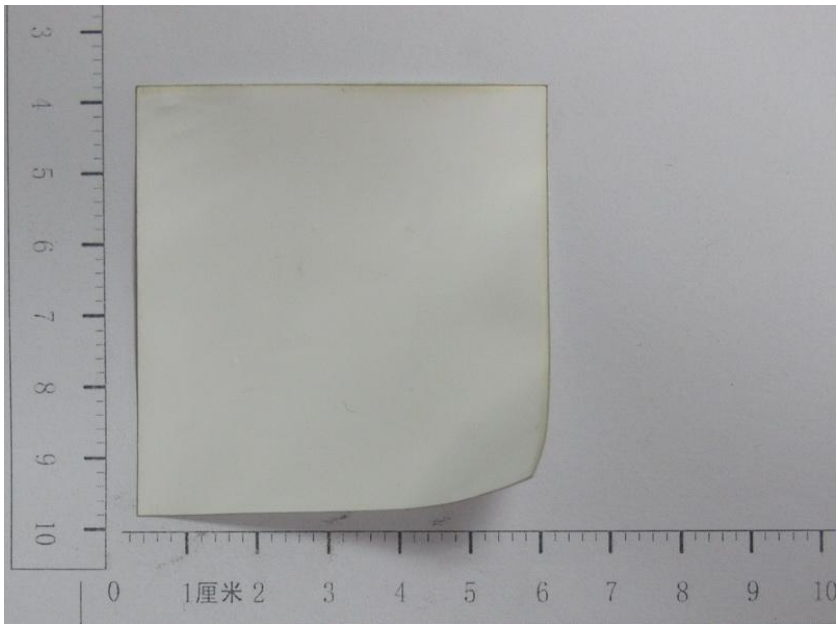
名称：螺钉

料号：W380-B-20



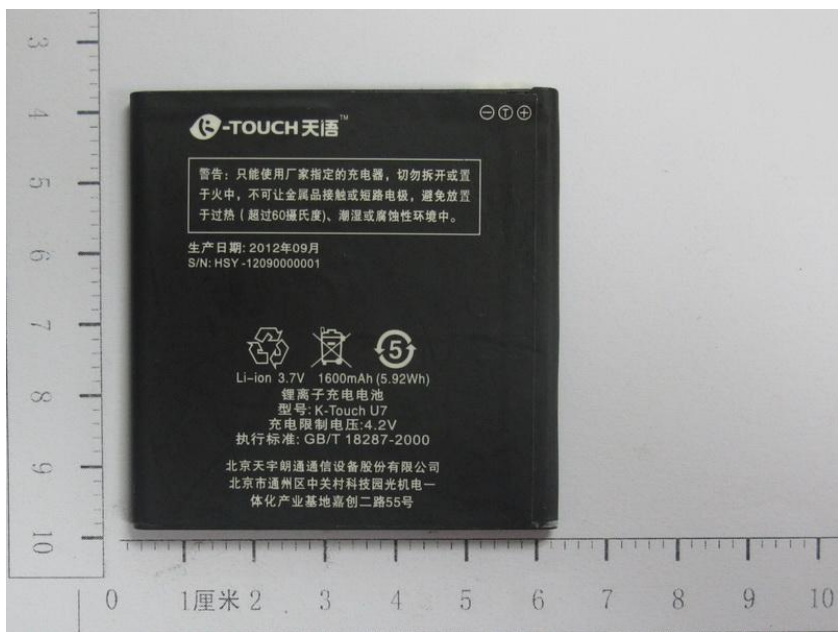
名称：螺钉

料号：V700-B-005



名称：电池仓贴片

料号：W380B-B-19

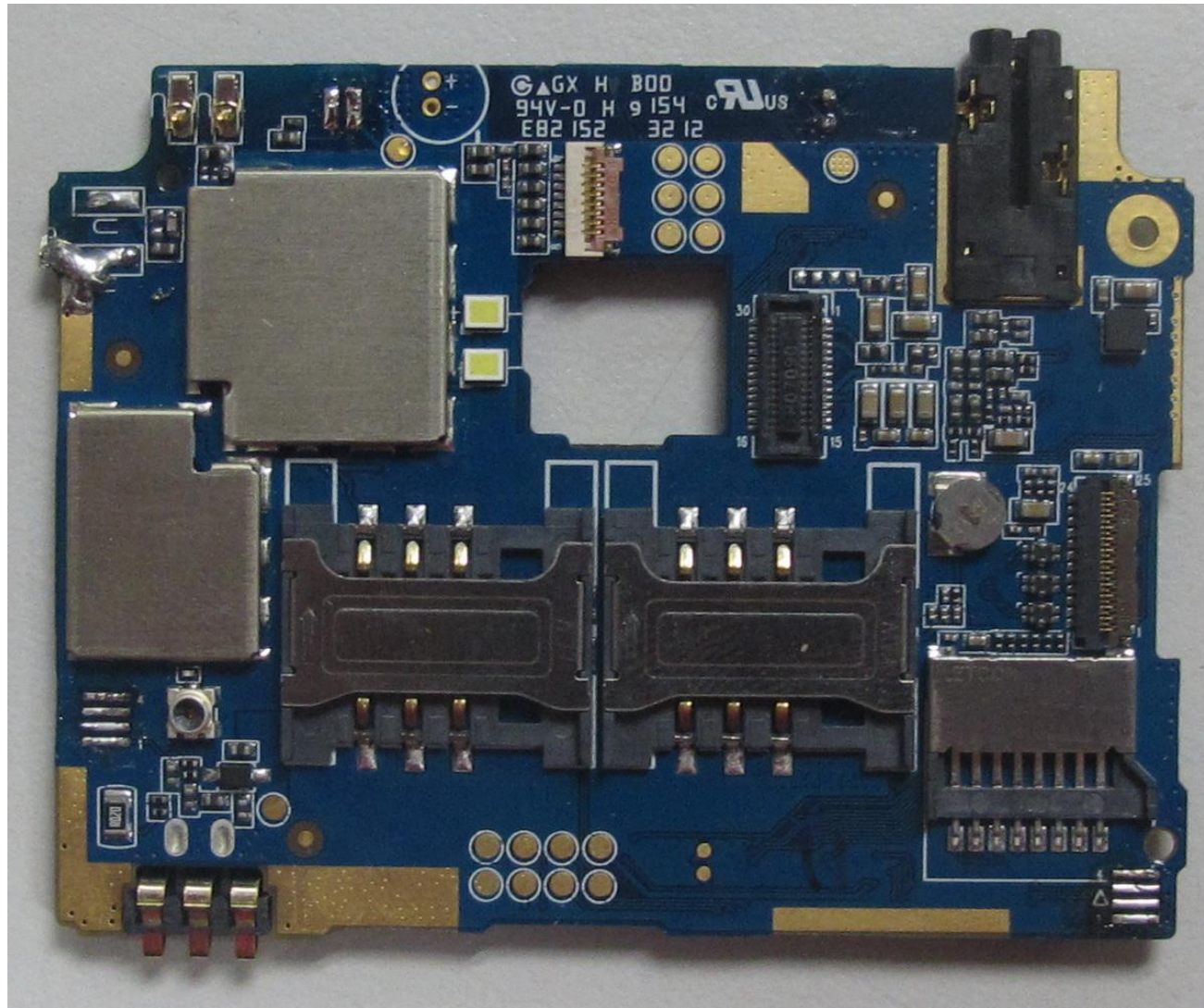


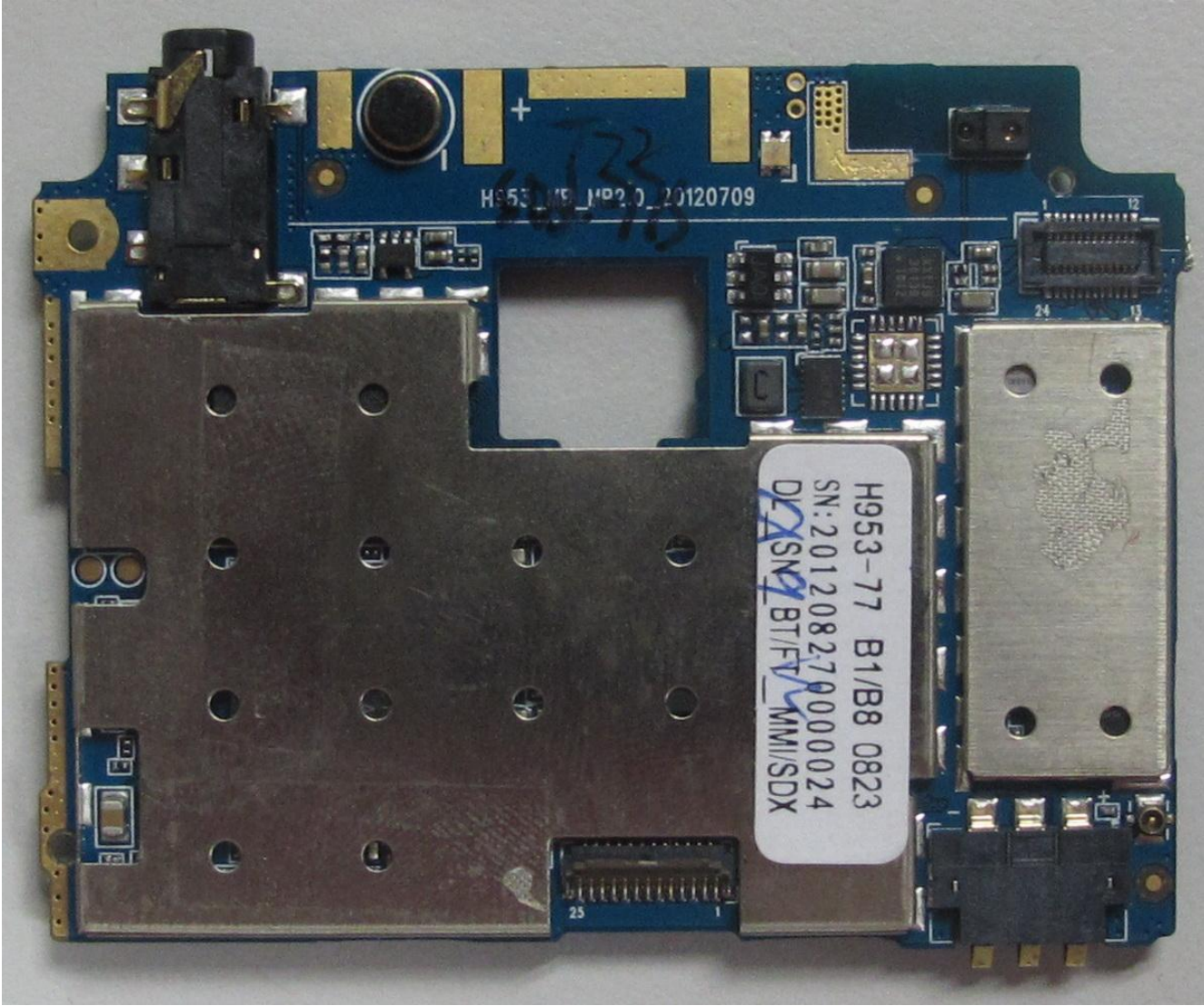
名称：电池

料号：W380-F-05-02

主板外观图

TYU7



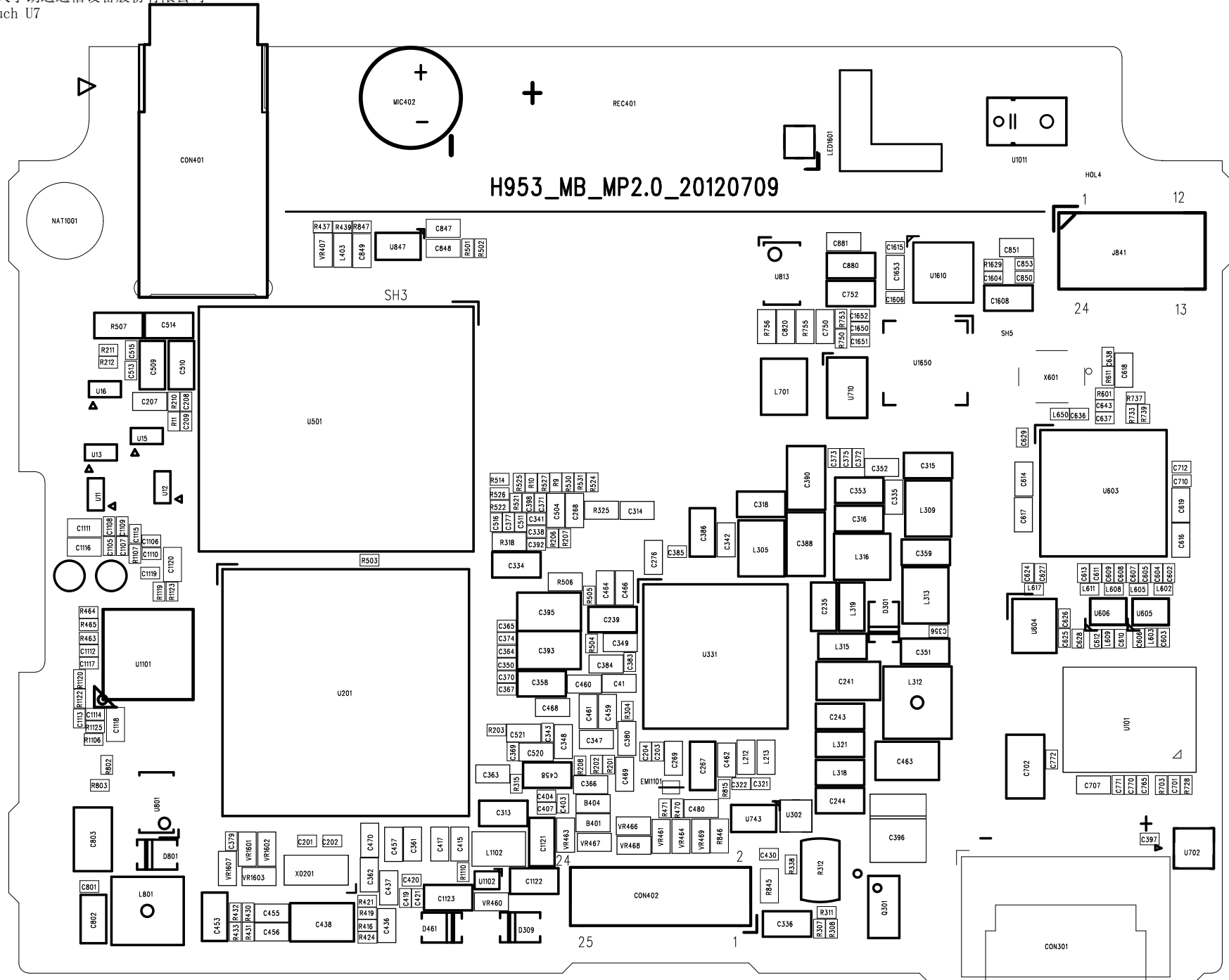


H953 MP2.0 20120709

333

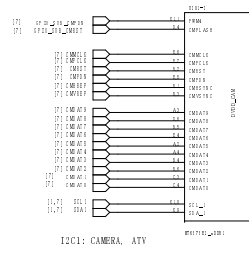
H953-77 B1/B8 0823
SN: 201208270000024
DS SN BT FT MM SDX

25

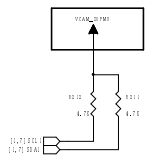


H953_MB_MP2.0_20120709

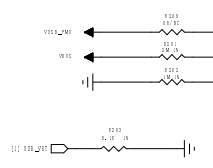
Note: AFC > 3G_TX_VGA > APC > 3G_VBIAS



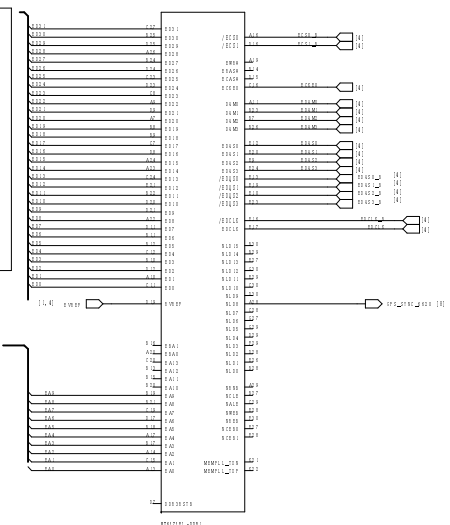
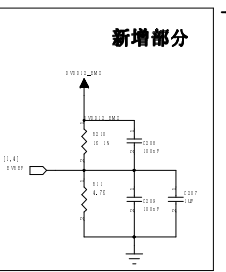
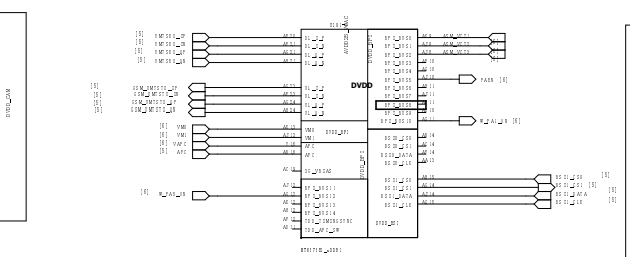
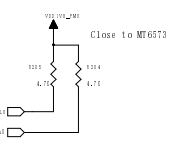
Need to turn off if I2C1 devices not operated



Close to MT6575

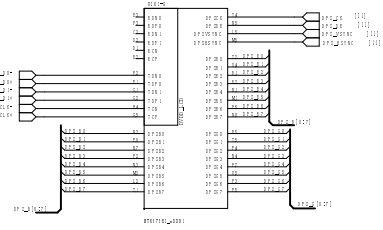


I2C0: CTP, M-Sensor, G-Sensor, ALS/SPS, GYRO, OFN



driving calibration setting (LPDDR1/LPDDR2)

100 Ohm differential



Note: tied together (1.8V or 2.8V)
DVI028_NUP1TX/DVI028_NUP1RX/DVI028_NUP1H/AVD028_NUP1

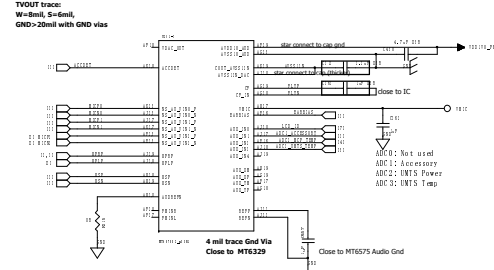
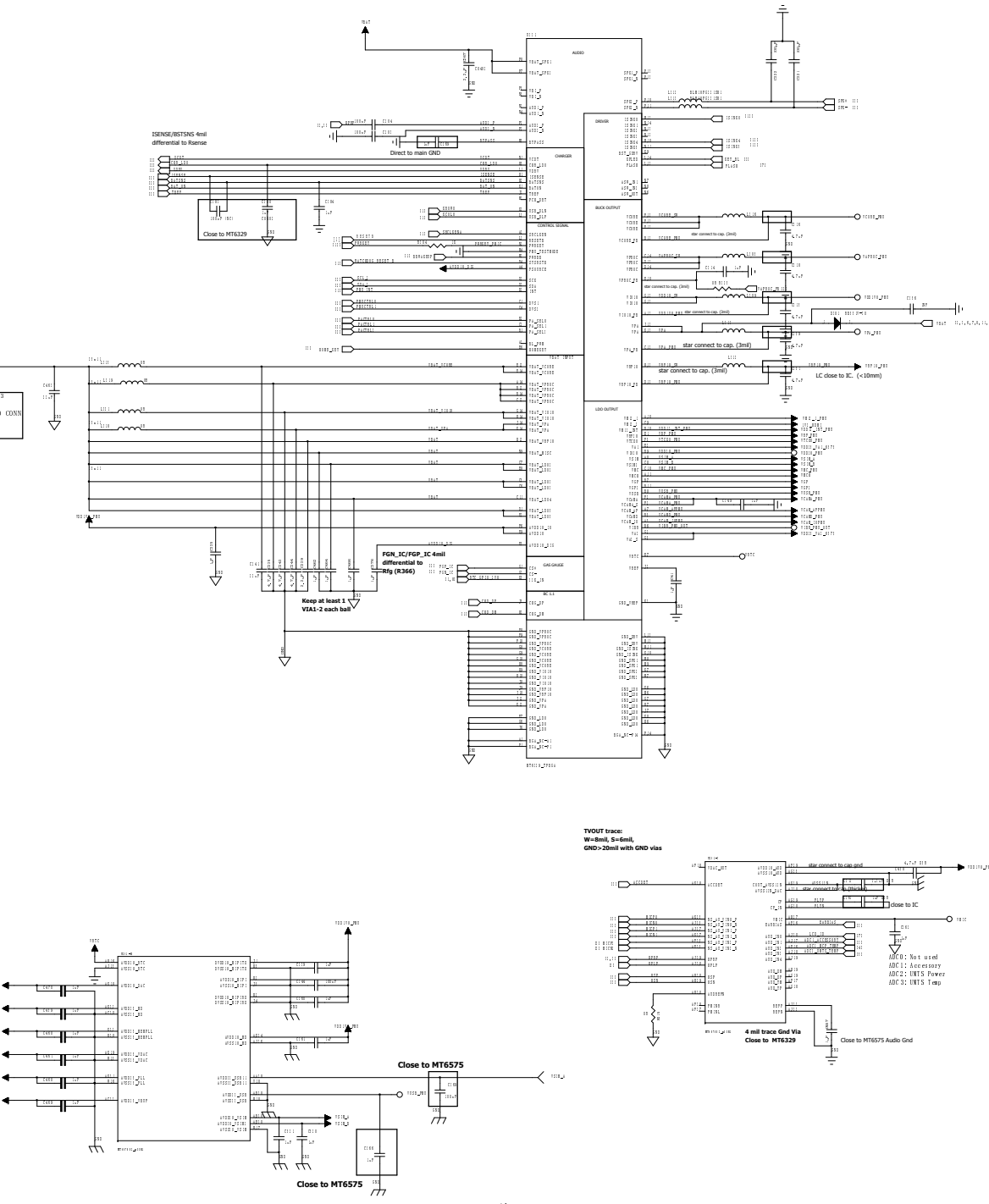
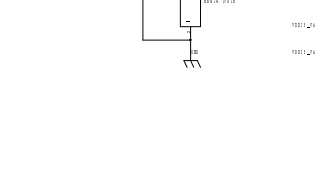
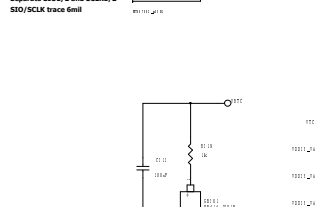
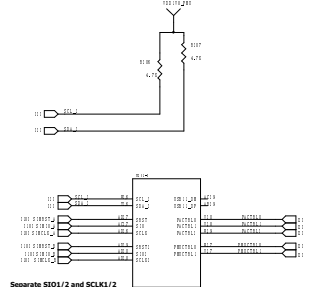
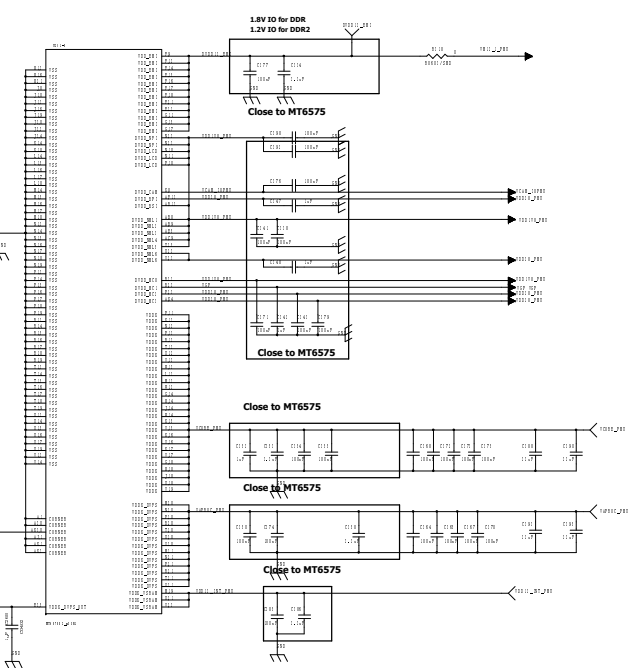
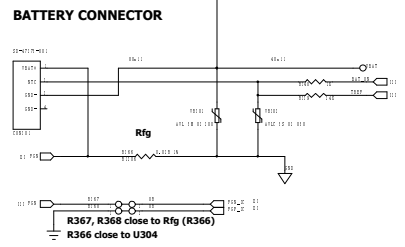
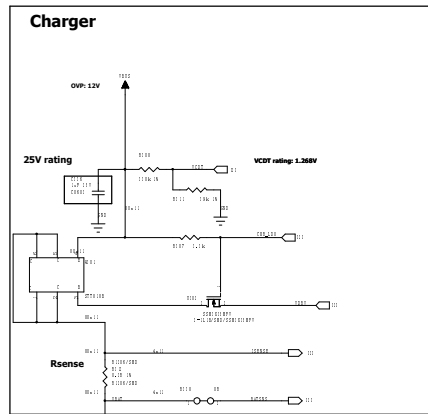
PWM1-3 can be used for sleep mode

```

#EXT1:0: MEMBANK01->SENSORS
#EXT1:1: AST2001 GP100_EXT1 / SENSOR
#EXT1:2: MT6620 BGP_EXT1 / SENSOR
#EXT1:3: SENSOR / GYRO (never used)
#EXT1:4: MT6620 WIF1_EXT1 / SENSOR
#EXT1:5: ATY / SENSOR
#EXT1:6: CTP
#EXT1:7: AST2001 H1_EXT1 / SENSOR
#EXT1:8: M16 329
#EXT1:9: M16 329 Watchdog
  
```

- I2C0: G/M/CYRO/ CTP / OFN
- I2C1: Camera / ATY
- I2C2: PMIC
- I2S0: ATY
- I2S1: MT6620
- MSDC0: Reserved
- MSDC1: T-Card (Support SD3.0)
- MSDC2: Reserved
- MSDC3: MT6620

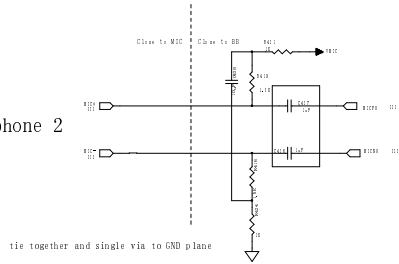
1. Close to Battery Connector.
2. Main path should be 40mil.
3. Star connection from R312 to BAT Connector



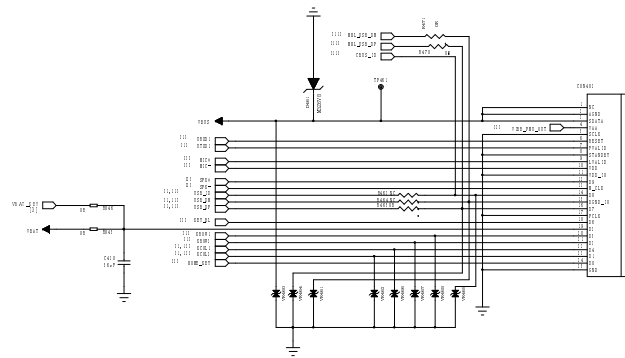
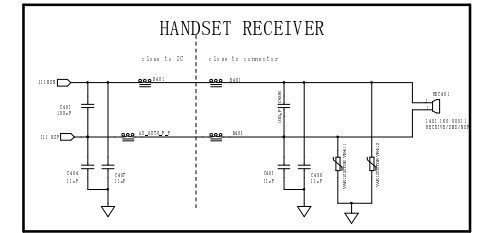
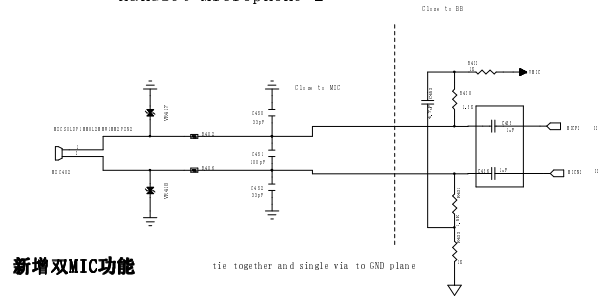
公司
型号
硬件信息
页码

北京天宇朗通通信设备股份有限公司
K-Touch U7
POWER
2/12

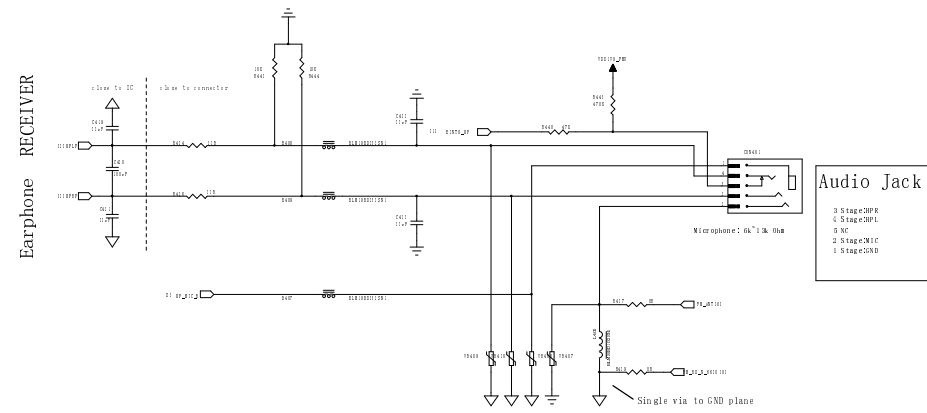
Handset Microphone 2



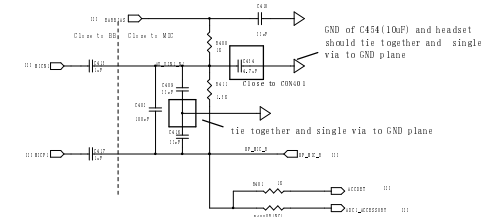
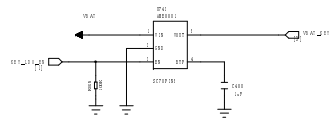
Handset Microphone 2



USB&CONNECTOR 460



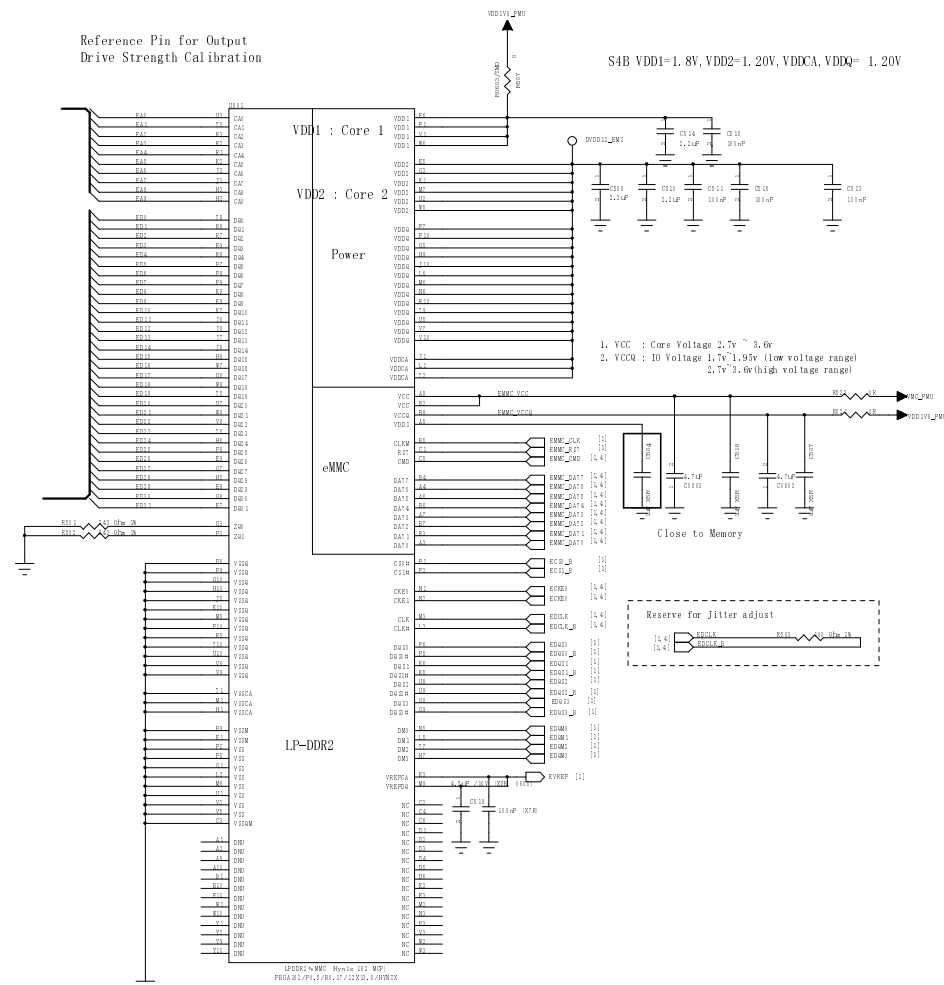
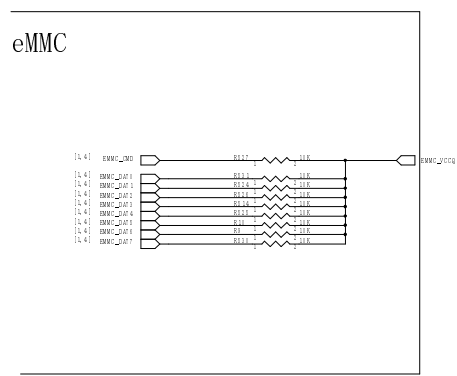
Earphone MICPHONE



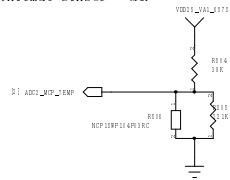
MCP

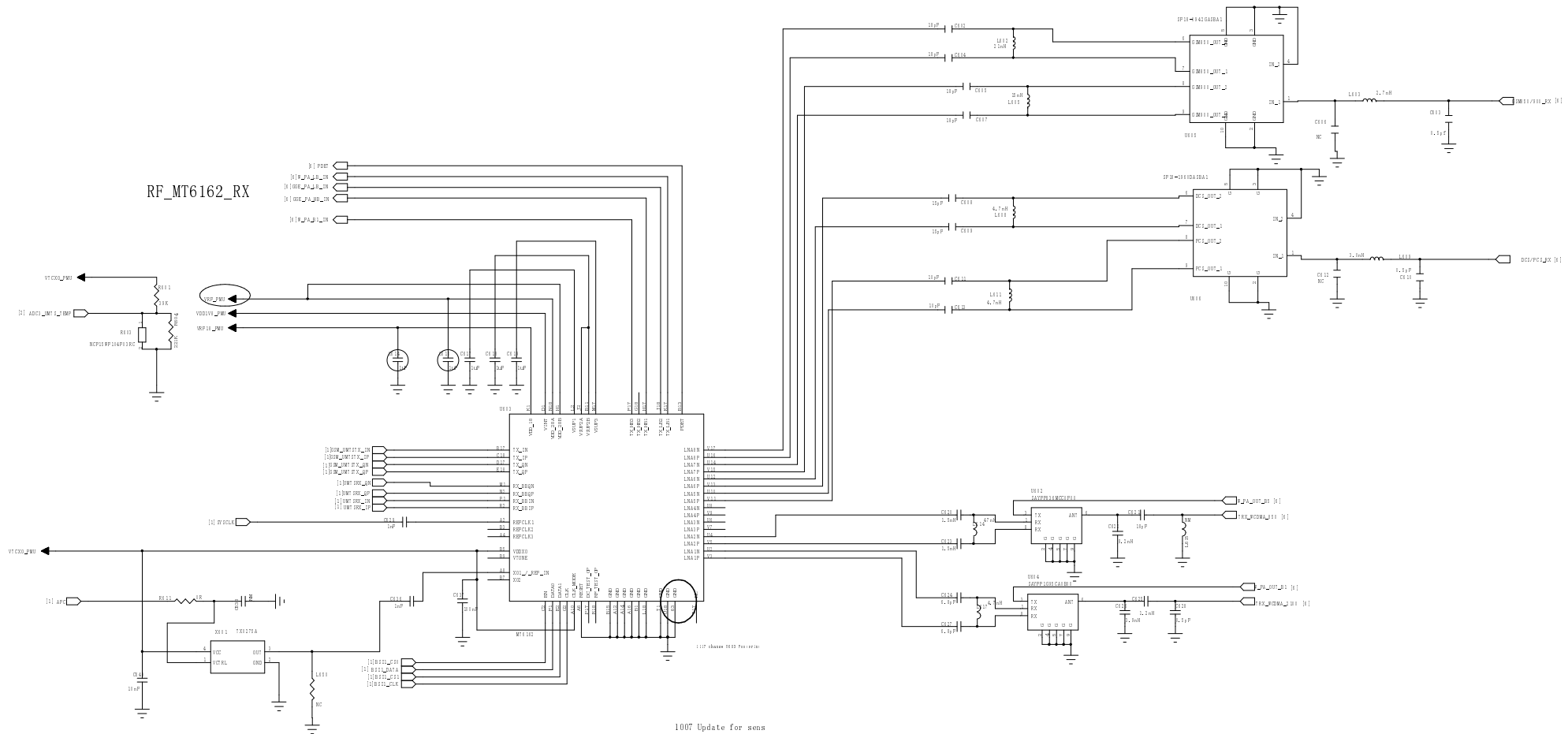
Reference Pin for Output Drive Strength Calibration

S4B VDD1=1.8V, VDD2=1.20V, VDECA, VDDQ= 1.20V



Thermal Sensor - MCP





0713
 VTCXO_PMI=VDDXO
 ADC7_LMTS_Temp_RF_TEMP
 VDD18_PMI=VINT
 VRF18_PMI=VDD_18
 BS11_CSO=EN
 BS11_DATA=DATA0
 BS11_CS1=DATA1
 BS11_CLK=CLK

1117 Update Note
 1. Change U603 Footprint to MT6162/AQFN62/P.0.333/B0.27/6.2X6.2
 2. Change U603 GND_PIN from Pin1 to Pin63
 3. Add B2 Common Mode trap
 4. VDD_28 change to VRF_PMI
 5. Remove R605
 6. Add R616, R631, R632 0201 Short 0ohm for Current Measure
 7. C614, C616 from NW change to 1uF
 8. VBAT in RF change to VBAT_RF, add 0805 0ohm
 9. VTCXO_PMI add LDO

1007 Update for sens
 1. B8
 C634 from 8.2nH to 5.6nH
 2. B2 use B7955, C639,
 C642 from 8.2pF to 6.8pF,
 L621 from 5.6nH to 6.8nH, C641 from 3.6nH to 15nH
 3. B1
 C624 and C627 from 8.2pF to 6.8pF, C625 from 1.2nH to 1.1nH
 4. DCS
 C608, C609 from 39pF to 3pF

0713 to be te Next Name
 ADR0_MIS_POWER -GGE_PA_VDET
 REGR_M0DE -GGE_PA_M0DE
 ADR0_MIS_POWER -GGE_PA_VDET
 VAPC -GGE_PA_W0AMP
 B0RSM -GGE_PA_M0
 PAEN -GGE_PA_ENABLE
 VBI -V_PA_VBI0DE1
 VBI -V_PA_VBI0DE0
 W_PA5_0N -V_PA_05_EN
 W_PA8_0N -V_PA_08_EN
 W_PA1_0N -V_PA_01_EN
 W_PA2_0N -V_PA_02_EN

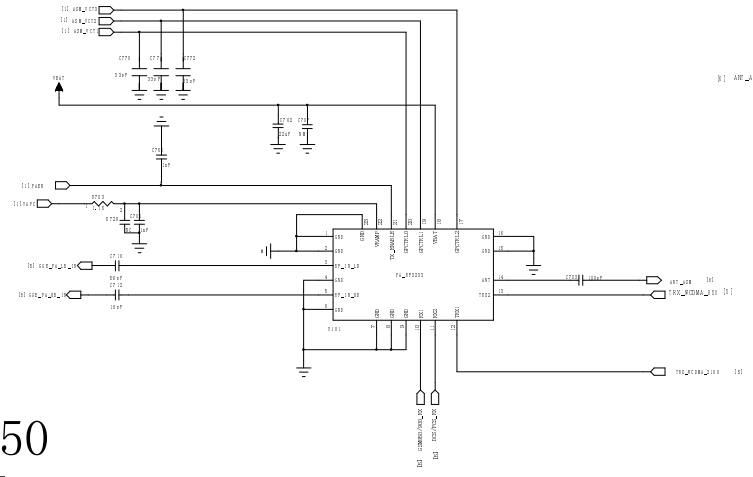
ASM Control Truth Table

	TX_EN	Ver3	Ver2	Ver1
(FRX1) W_Band2/5	L	L	H	H
(FRX2) W_Band6	L	L	L	H
RX1_900/850	L	H	L	L
RX2_1800/1800	L	L	H	L
(TX_1) GSM_1B	H	L	H	L
(TX_0) GSM_3B	H	L	H	H
E_TX1_900/850	H	L	L	L
E_TX0_1800/1800	H	L	L	H

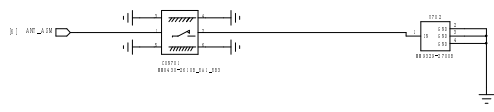
RF_TX_ASM

1109 Update Library
 R703 change to 1.1K, C701 change to 1nF
 for RF Filter

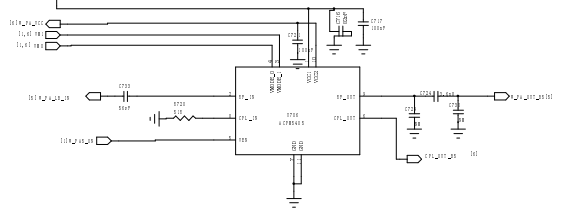
GSM_PA



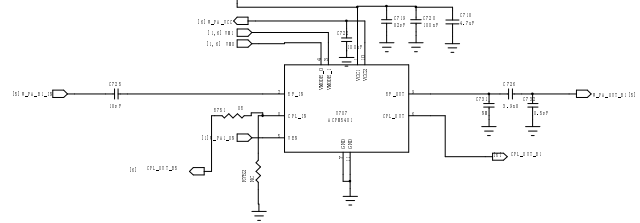
ANT



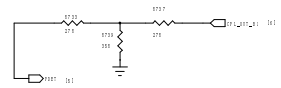
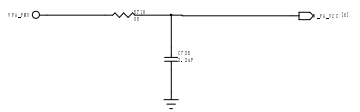
WCDMA_850



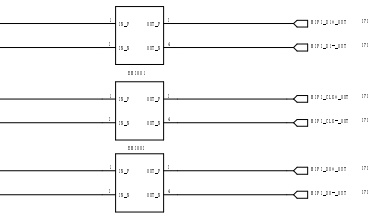
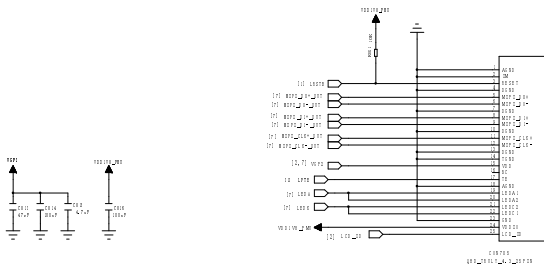
WCDMA_2100



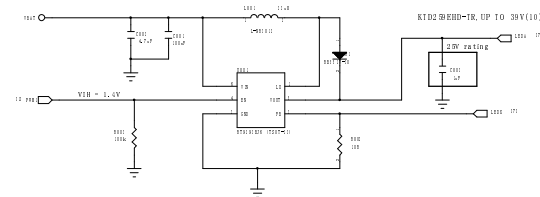
1117 to be te
 1. VBI in RF change to VBI_0F, add 680G Ohm



4. 5HD LCM Connector 810

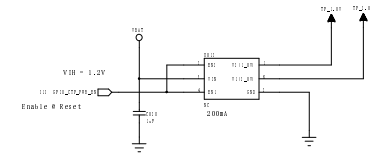
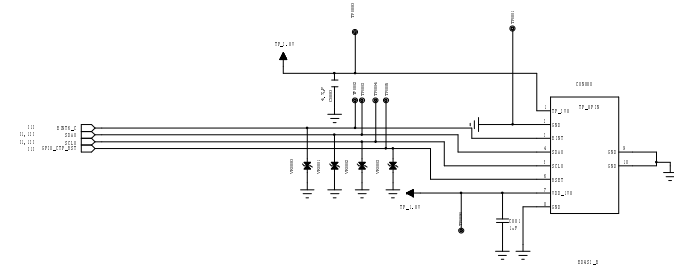


BACKLIGHT DRIVER 800

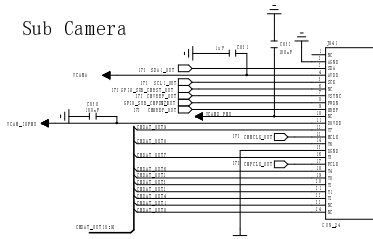


Capacitive Touch Panel

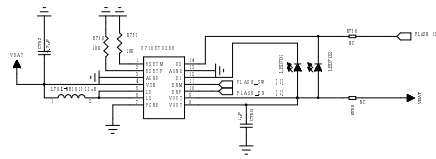
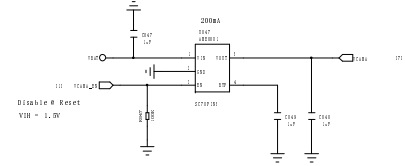
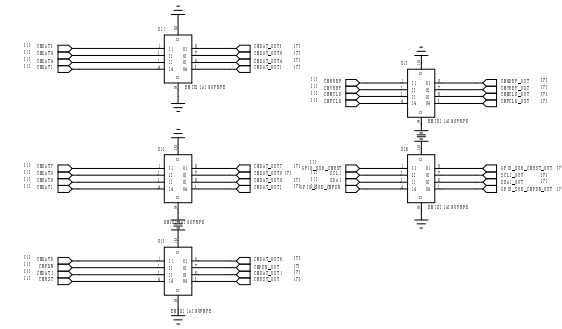
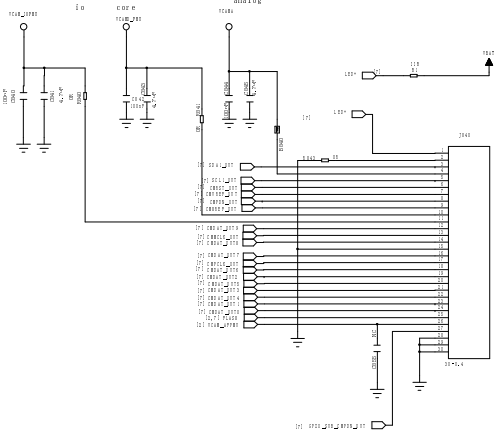
880



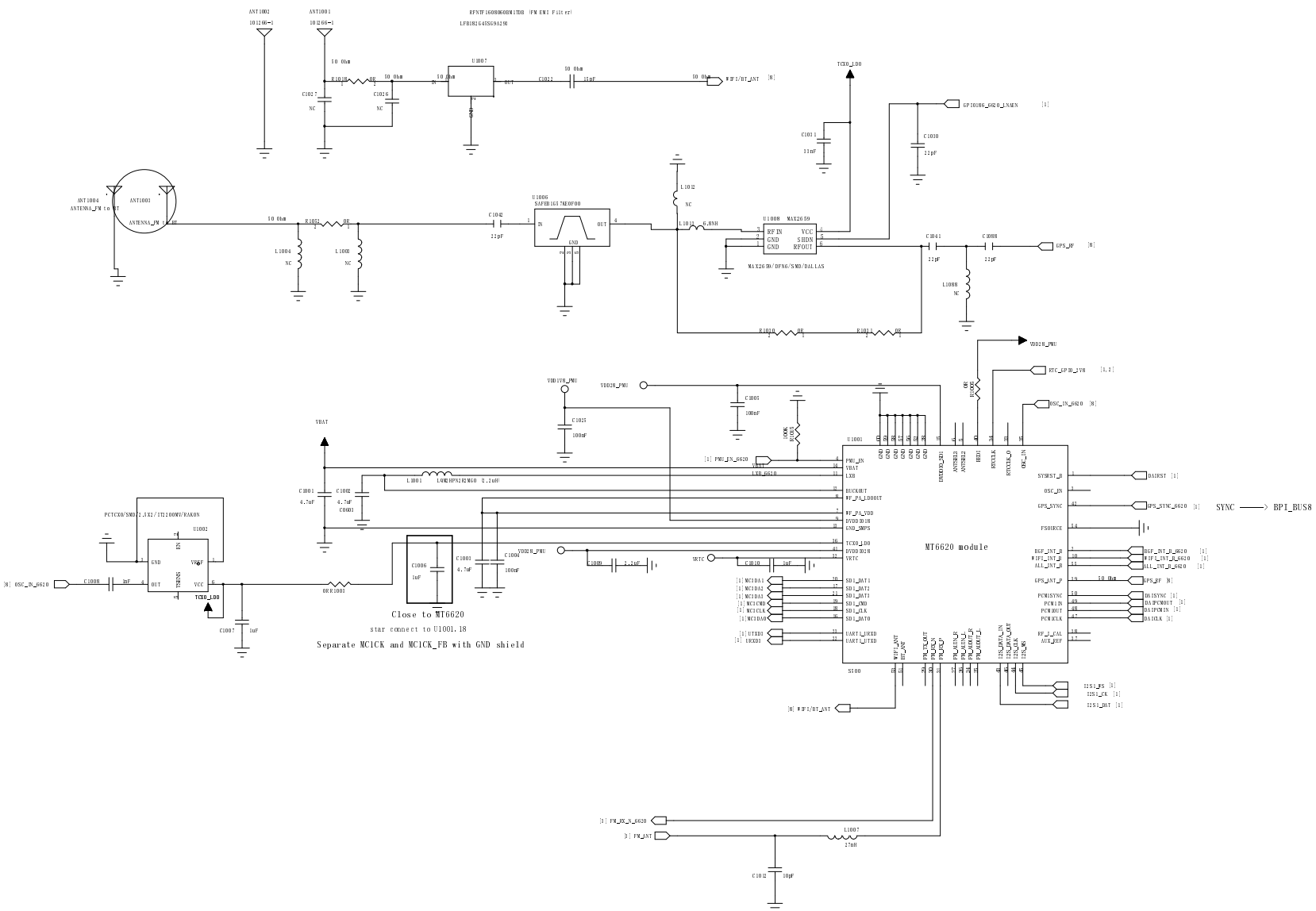
Sub Camera



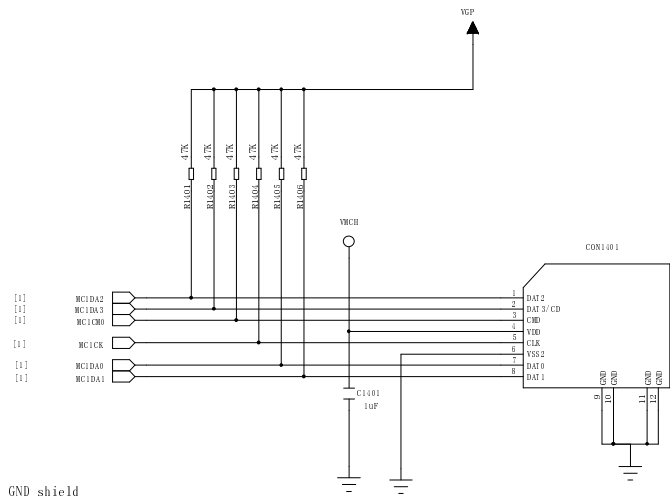
Main Camera



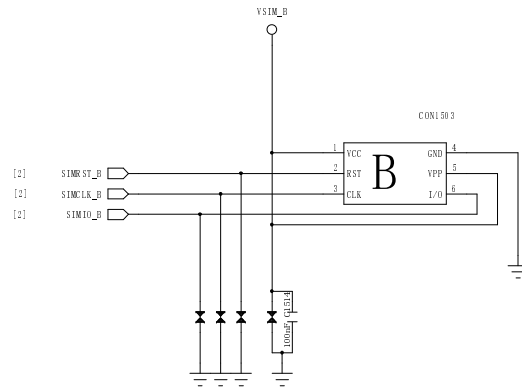
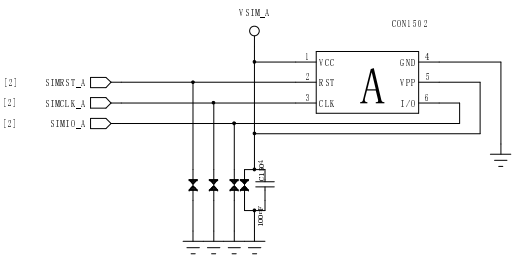
BT&WIFI 二合一天线



SD CARD



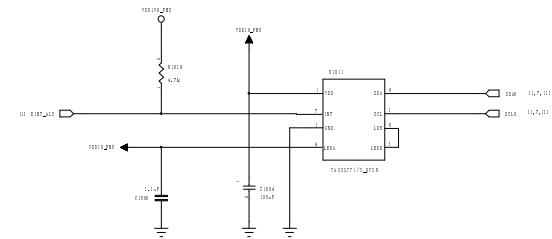
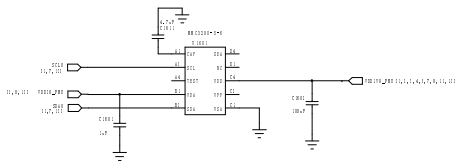
Separate MCOCK and MCOCK_FB with GND shield



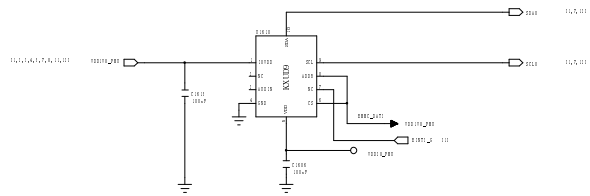
公司
型号
硬件信息
页码

北京天宇朗通通信设备股份有限公司
K-Touch U7
SIM CARD
10/12

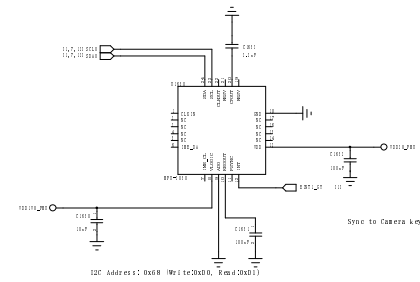
M-Sensor



G Sensor
1610

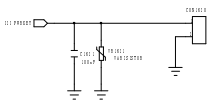


Gyro Sensor
1650



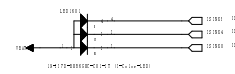
Power Key

DO NOT put pull-up resistor on PWRKEY



KEY
1620

Indicator LED



VOL_UP

VOL_DWON

